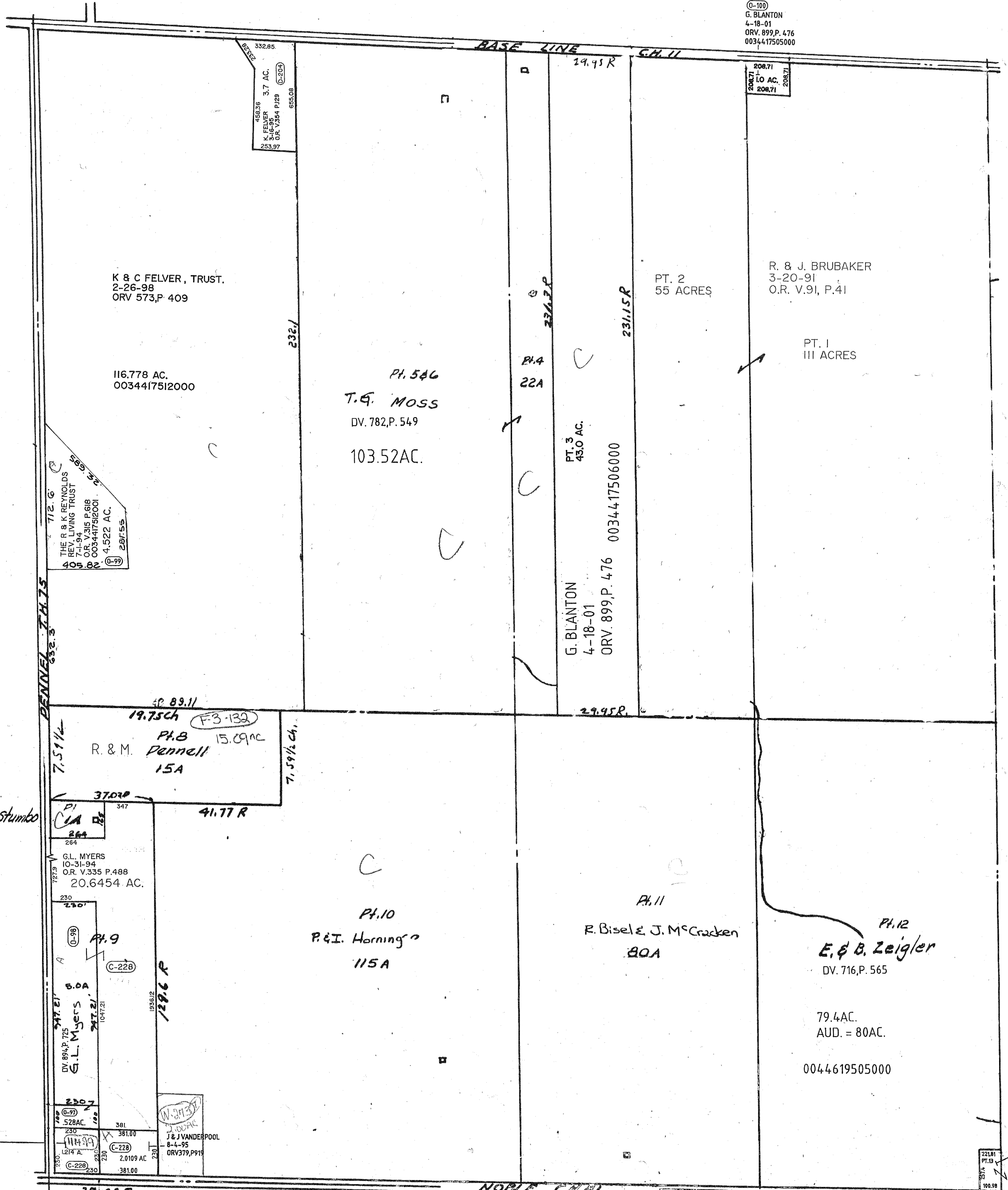


0-100
G. BLANTON
4-18-01
ORV. 899, P. 476
0034417505000



DENNEL T. H. 15
632.3

BASE LINE CH. II

NOBLE CR.

K & C FELVER, TRUST.
2-26-98
ORV 573, P. 409

116.778 AC.
0034417512000

PT. 546
T. G. MOSS
DV. 782, P. 549
103.52 AC.

PT. 3
43.0 AC.
G. BLANTON
4-18-01
ORV. 899, P. 476
0034417506000

PT. 2
55 ACRES

R. & J. BRUBAKER
3-20-91
O.R. V. 91, P. 41

PT. I
111 ACRES

19.75 ch
PT. B
15.09 AC
R. & M. Pennell
15A

PI
CIA
264
G. L. MYERS
10-31-94
O.R. V. 335 P. 488
20.6454 AC.

PT. 10
P. & I. Horning
115A

PT. 11
R. Bise & J. McCracken
80A

PT. 12
E. & B. Zeigler
DV. 716, P. 565

79.4 AC.
AUD. = 80 AC.
0044619505000

PT. 9
G. L. MYERS
DV. 894, P. 725

J & J VANDERPOOL
8-4-95
ORV 379, P. 919

T & A NEHRKORN
10-17-94
O.R. V. 333 P. 60

S. & L. BOND
12-3-01
ORV. 991, P. 59
595 AC.
22181
PT. 13
2574
100.98

37.03 R

Twp. 23-R. 18

BLOOMINGGROVE TWP. SEC. 4

213-02

1" = 400'

2-11-02