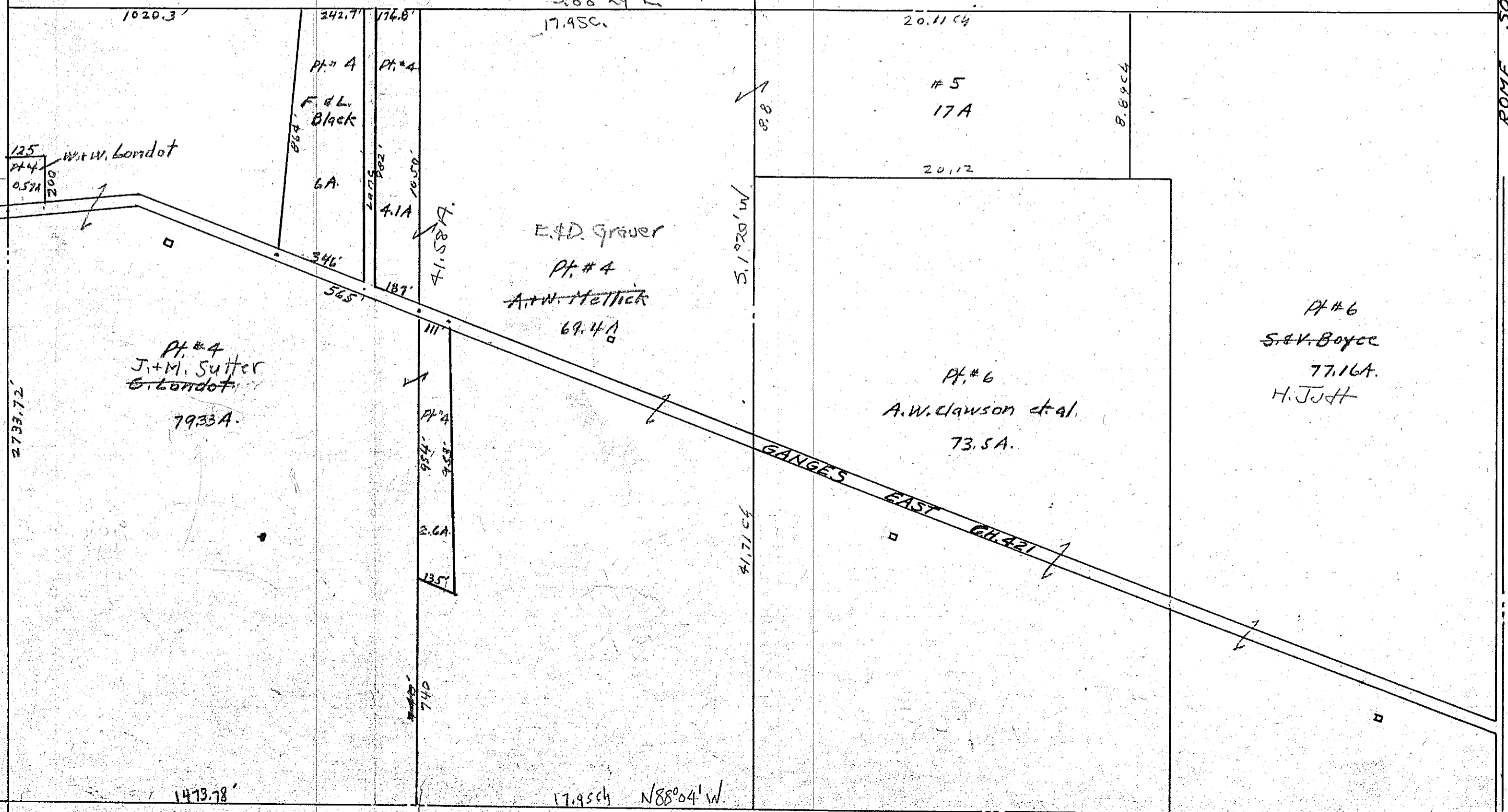


#2
R. & E.
Gearhart
8A.
Shiloh
Union

#3
~~F. Weber~~
G. Kistner
152A
S.M. Donohue

#1
R. M. Gumble
A.C. WHITE
160A

Wooden
Covered
Bridge



ROME SOUTH C.H. 76

125
Pt #4
0.571
200
W. & W. Londot

Pt #4
F & L
Black
6A

Pt #4
4.1A
71.87A

E. & D. Grauer
Pt #4
A. W. Mettlich
69.4A

#5
17A

Pt #6
A. W. Clawson et al.
73.5A

Pt #6
S. & V. Boyce
77.16A
H. J. J. H.

Pt #4
J. & M. Sutter
& Londot
79.33A

17.95ch N88°04'W

Union TWP. 23-R. 18

BLOOMINGGROVE TWP. SEC. 32

AP - Pocket 5 - Folder 1