

275' 109
5.854
300.13
449.29
2.494
265' 119

Pt. 6
M.D. Mackey
47.62A

Cartoon Service Inc.

CITY OF SHELBY

GOODYEAR RD. 60'

GOODRICH RD. 30'

Firestone Rd. (Private)

Board of Education
shelby city school Dist
Community Improvement Corp of Shelby
42.04A

The Most Pure Heart of Mary Church
5.5A

Pt. 7
G.M. Wilson
54.5A

13.5A

MAP 46

Corp. Line
SHELBY-GANGES

Pt. 7
7 1/2 A

Pt. 4
A.W. & A.L. Conklin
11 1/4 A

Pt. 3
10 1/4 A
7 54.32

Pt. 1
E. Whisten
19.01 A
MAP 44

Pt. 8
M. Scherer
28A

Pt. 13
44.06A

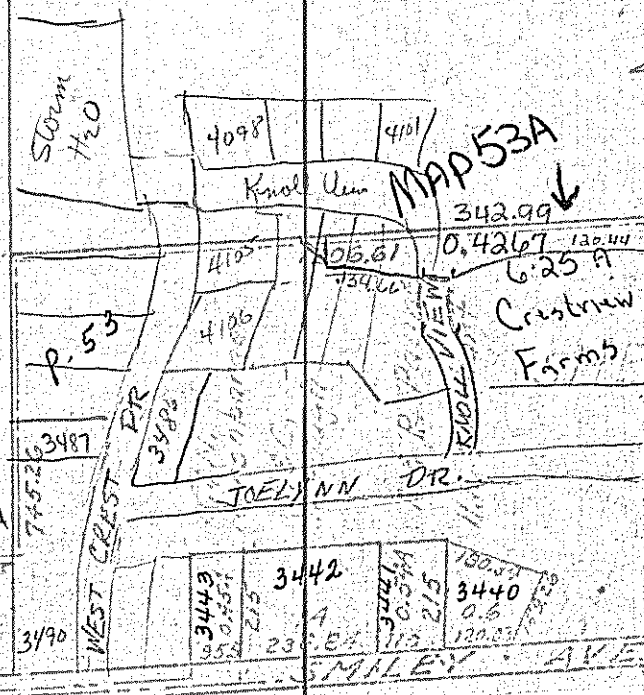
J.M. Scherer
CRASS COUNTY LAKE

Pt. 10
57.66 A

Pt. 12
The Board of Education
shelby city school District
42.715A
43.37A

Pt. 9
H. & M. Scherer
49A

Pt. 11
E.G.D. Dick
10.46A
6.79A
Crestman Farms



Twp. 22-R.19

47-A

SHARON TWP. SEC. 6