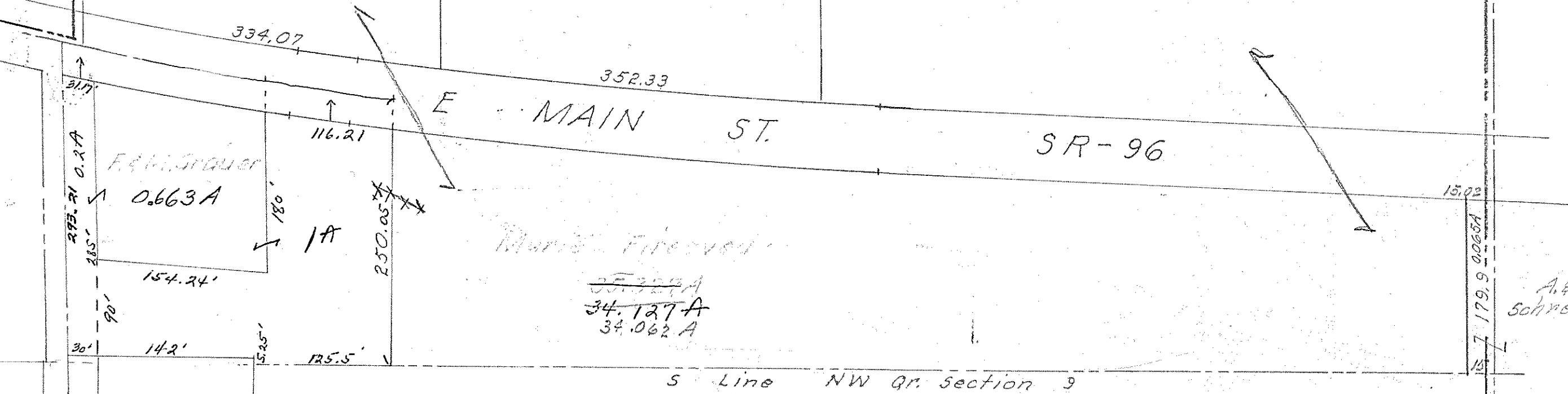


58

350  
623.56  
637.97  
672.42  
EVANGELICAL  
UNITED  
BRETHERN  
CHURCH  
5.24 A

890.41 E Line NW Qr Section 9



F. H. GRAUER  
0.663 A  
1A

Marie Firewood  
34.127 A  
34.062 A

A. E. P. Schreiber

S Line NW Qr Section 9

Annexed to Shelby City 12-8-67  
T-22, R-19

CITY OF SHELBY

58

58