

(E) STATE OF OHIO  
DV. 653, P. 551  
1.32 AC.  
RAN CLOSURE OFF PLANS FOR  
AC. CLOSURE-004/007  
4.9 WD  
08 AC.

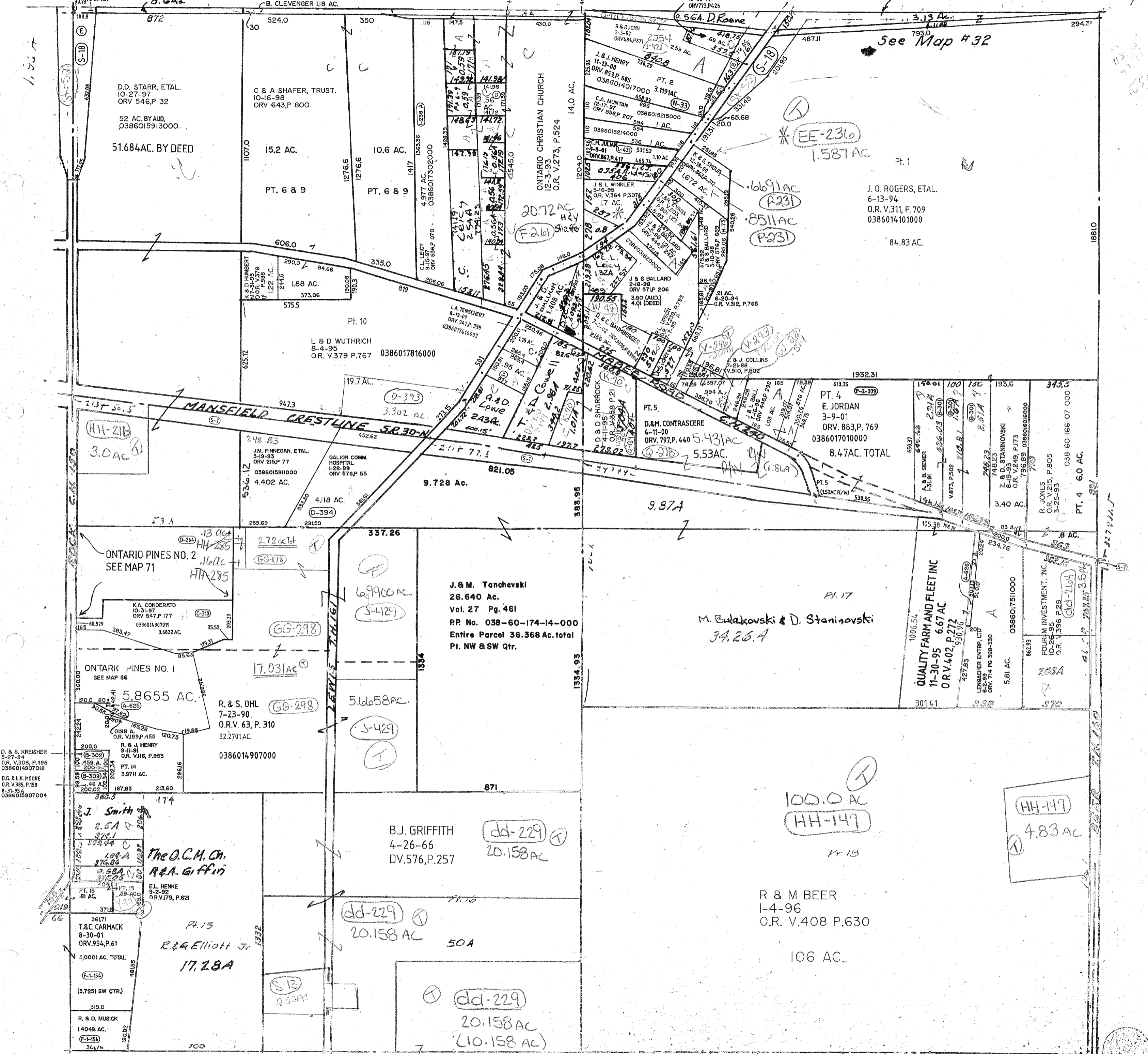
(A) M.A. SHERMAN  
2-3-98  
ORV 567, P. 645  
95 AC.  
0386017414004

(D) ONTARIO CHRISTIAN CHURCH  
9-16-98  
ORV 635, P. 293  
.56 AC.  
0386013904000

(B) STATE OF OHIO  
D.V. 646, P. 654  
.72 AC. 63-WD  
(C) STATE OF OHIO  
.25 AC.

See H. & M. Allot. Springfield Twp. - 52

See Map # 32



D. & S. KREISHER  
5-27-94  
O.R. V.308, P.498  
0386014907018  
D.B. & L.K. MOORE  
O.R. V.385, P.158  
8-31-95  
0386015907004

TRND 31-8-19

SPRINGFIELD TWP. SEG. 15  
ONTARIO CITY 10-4-02