

ORV 630, 734

* dd-123
8.511 AC Tot.
(7.339 AC SE)

R. CAMPBELL 1/2 INT.
C & C BLOSSER 1/2 INT.
D.V. 411P 527
D.V. 428P 285
0386014517000
924 AC.

D. ROACHE
12-13-97
D.V. 857P 276
110 AC.
0386014518000

(1.159 AC)
(North of U.S.A. 30)

PASTA PROPERTIES, INC.
6-20-95
O.R. V.371 P.13

SPRINGMILL PART .45 AC.
1-9-84 0384014916000
O.R. V.337, P.177 40 AC.
038601714000

LIN-ROSE, INC.
5-31-95
O.R. V.367
P.216

R. B. HOSKEY
3-6-81
O.R. 858 P. 139

WAL-MART STORES INC.
O.R. V.41 P.803
1.327 AC.

C. J. FLOWERS
3-2-88
O.R. V.375 P.784

ONTARIO VILLAGE
V.649, P.685

ONTARIO VILLAGE
V.646, P.750
33 AC.

R. B. HUNT
1-5-91
O.R. V.124, P.787

K. & T. REALTY LTD.
12-20-96
O.R. V.477 P.297

W. & M. SCHWARTZ
1-29-90
O.R. V.713 PG 808

SCHAUS FAMILY TRUST
O.R. V.204, P.359
1-7-93

W. & C. MILLS
V.917, P.518
7.87 AC.

W. & M. SCHWARTZ
1-29-90
O.R. V.713 PG 808

HUDSON PROPERTIES
& RENTALS LTD
2-16-00
O.R. V.783, P.815

Red Maple Farms
ON Comp.
416.2

4TH STREET PROPERTY
O.R. V.620 P.593
7-30-98

FIRST FEDERAL
S & L OF
1-19-97

CR/1, LLC
7-19-97

L. STARBUCK
13-98
O.R. V.453 P.1

STATE OF OHIO
V.678, P.66

SEE MAP 20

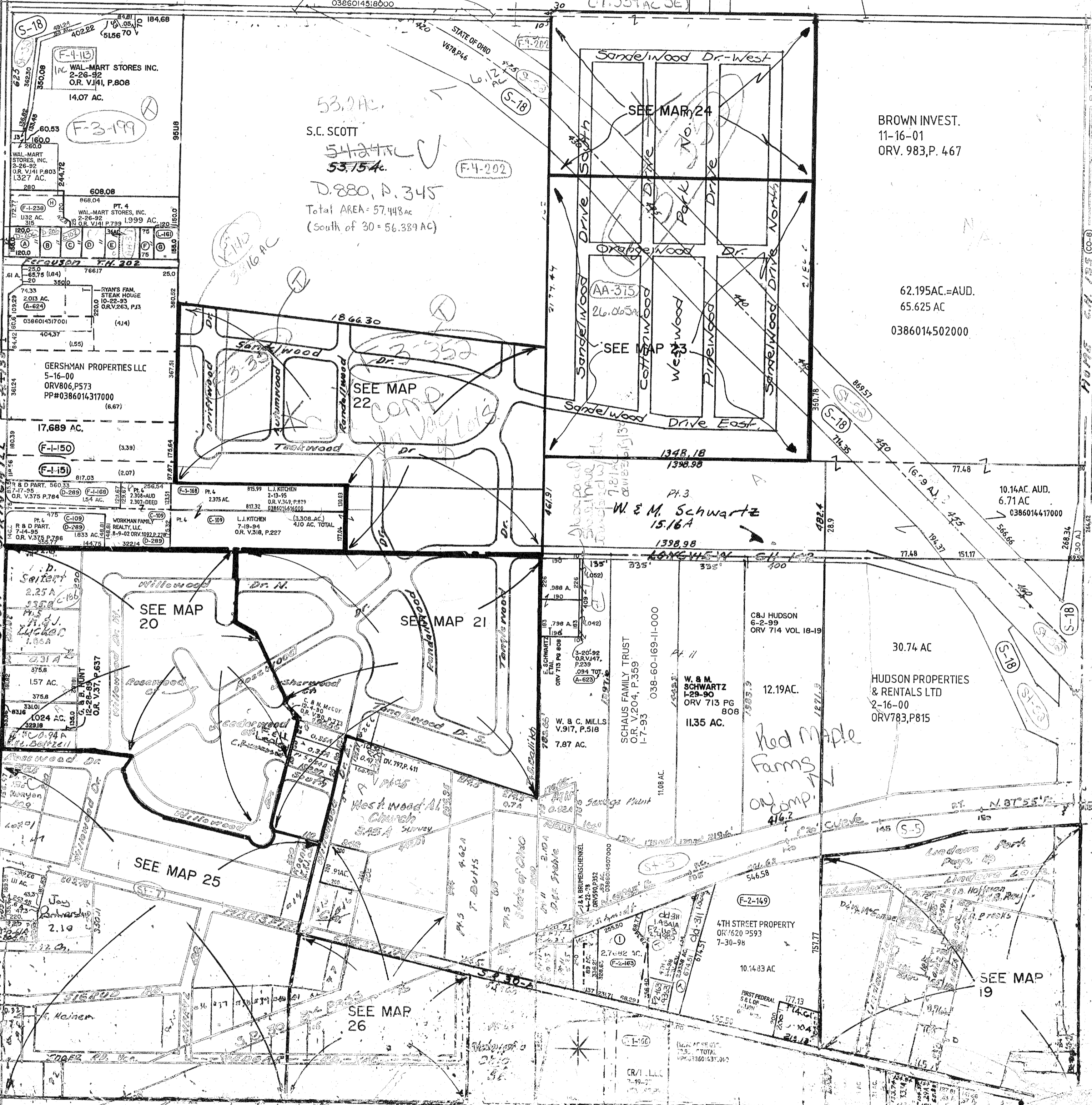
SEE MAP 21

SEE MAP 25

SEE MAP 26

SEE MAP 19

SEE MAP 22



53.7 AC.
S.C. SCOTT
54.24 AC
53.75 AC. (F-4-202)
D.880, P.345
Total AREA=57.448 AC
(South of 30 = 56.389 AC)

FIELD
3416 AC

SEE MAP
22
COMP.
IN VAC. LOTS

W. & M. SCHWARTZ
15.16 AC
1398.98

SEE MAP
20

SEE MAP
21

SEE MAP
25

SEE MAP
26

SEE MAP
19

Springfield-13

BROWN INVEST.
11-16-01
ORV. 983, P. 467

62.195 AC.=AUD.
65.625 AC
0386014502000

10.14 AC. AUD.
6.71 AC
0386014417000

30.74 AC

HUDSON PROPERTIES
& RENTALS LTD
2-16-00
O.R. V.783, P.815

Red Maple Farms
ON Comp.
416.2

10.1483 AC

177.13
174.61
212.18

L. STARBUCK
13-98
O.R. V.453 P.1

177.13
174.61
212.18