

SLOBODA SUBDIVISION N°2 PHASE "A"

SPRINGFIELD TWP. SEC. 26

PLAT RECORDED IN
PLAT VOL. 26, PG.66



Lot #1857

Lot #1858

THE NORTH WEST
CORNER OF THE N.E. 1/4
SECTION 26

EASEMENT FOR STORM
DRAINAGE, INGRESS
& EGRESS FOR MAINTENANCE
OF DETENTION BASIN

THE NORTH LINE
OF THE N.E. 1/4
SECTION 26

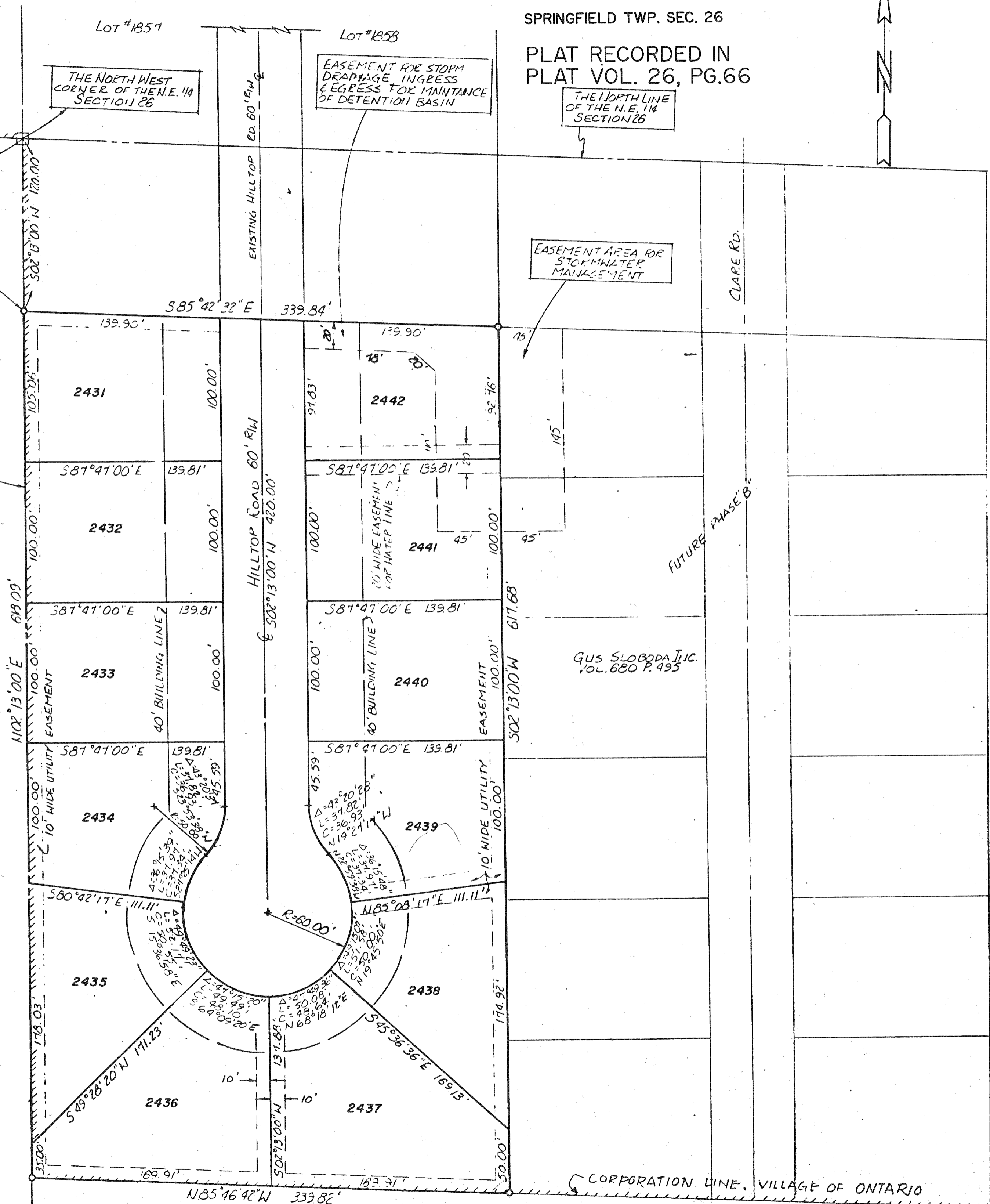
IRON PIN
FOUND

THE PLACE OF
BEGINNING

EASEMENT AREA FOR
STORMWATER
MANAGEMENT

THE WEST LINE
OF THE N.E. 1/4
SECTION 26

J. ED CHAMBERS
K. BOOTH
VOL. 511 P. 251
71.049AC.



GUS SLOBODA J.C.
VOL. 680 P. 495

CORPORATION LINE, VILLAGE OF ONTARIO

ONTARIO CITY