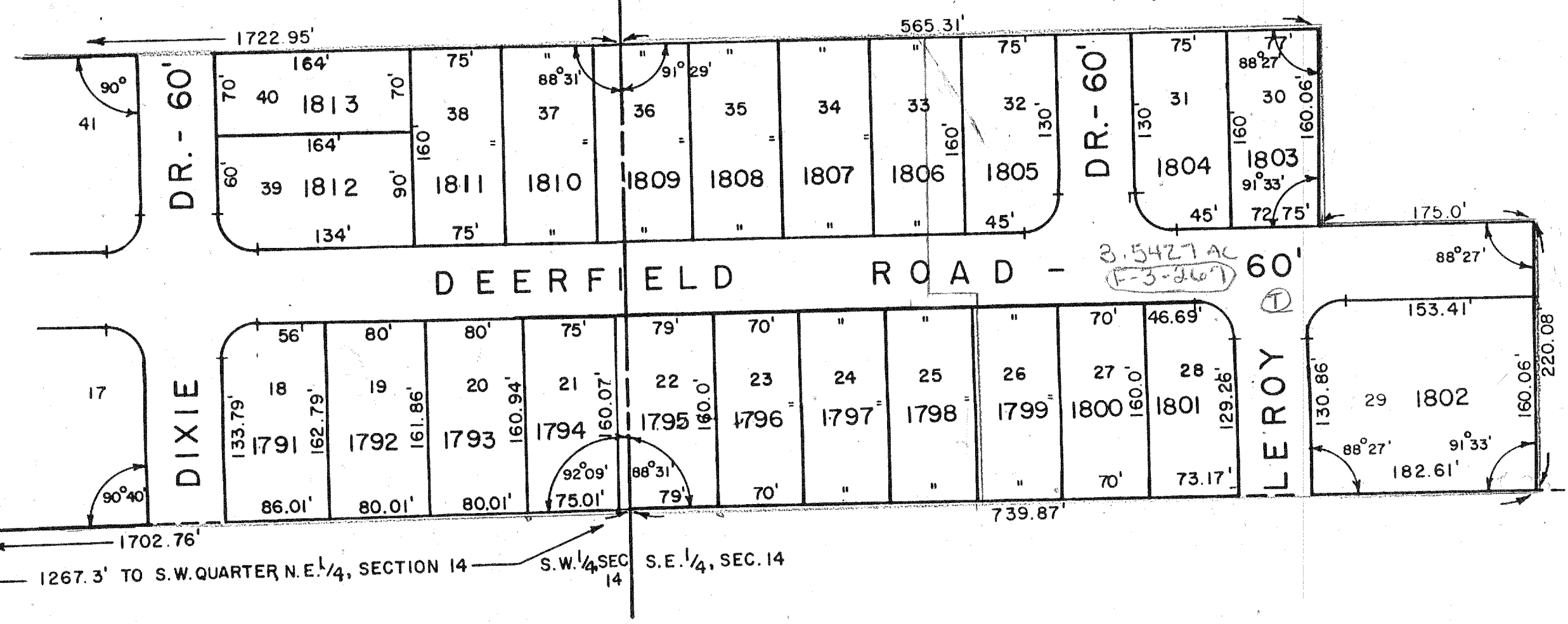


FORMERLY CRESTFIELD HEIGHTS
VOL. 19, PGE. 123

SCALE - 1" = 100'



VACATED 8-23-04
 Plat Vol 29, Pg 119 & 120
 ORD 1426, P. 84
 F-3-268 19.4531 ac = 038-60-248-10000
 F-3-269 3.5427 ac = 038-60-249-12000

87
39.88

ONTARIO CITY
 FORMERLY CRESTFIELD HEIGHTS
 VOL. 19, P. 123

28

3-29-01