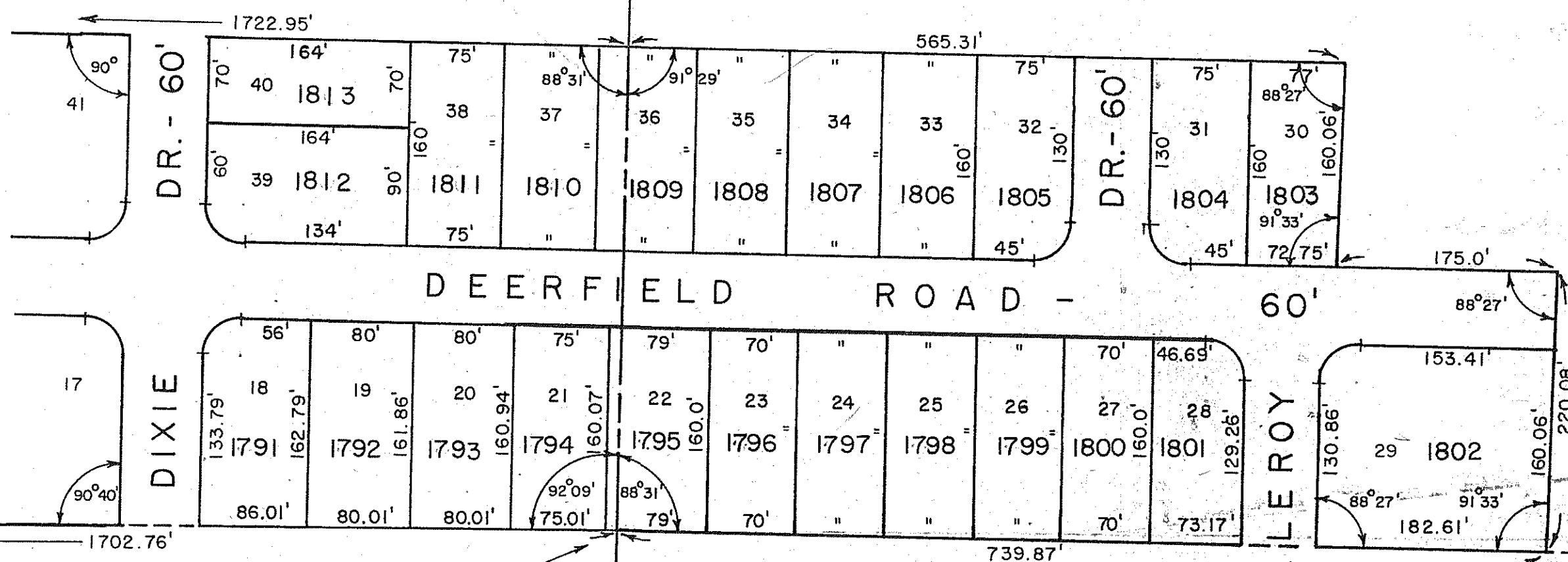


1702.76' SOUTH LINE, N.W. 1/4, SEC. 14

FORMERLY CRESTFIELD HEIGHTS
VOL. 19, PGE. 123

SCALE - 1" = 100'



1267.3' TO S.W. QUARTER N.E. 1/4, SECTION 14
S.W. 1/4 SEC 14 S.E. 1/4, SEC. 14