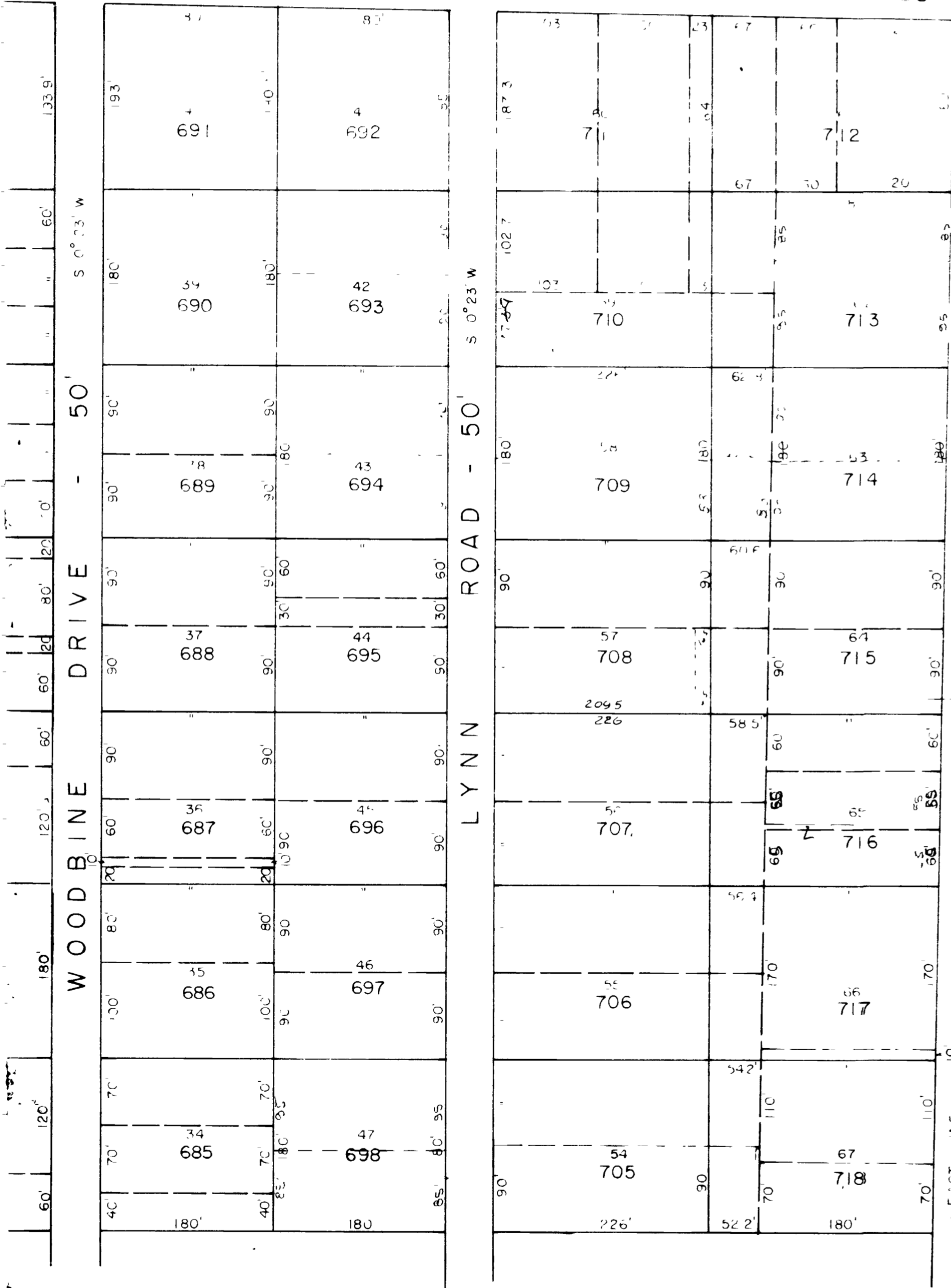


PARK AVE WEST - 60'



CORPORATION LINE - VILLAGE OF ONTARIO CORPORATION LINE - CITY OF MANSFIELD

S 0° 23' W

S 0° 23' W

S 0° 23' W

S 0° 23' W

S 0° 23' W

S 0° 23' W

S 0° 23' W

S 0° 23' W

S 0° 23' W



SCALE - 1" = 100'

FORMERLY SHAKER HEIGHTS VOL II, PAGE 17

ONTARIO VILLAGE 12