

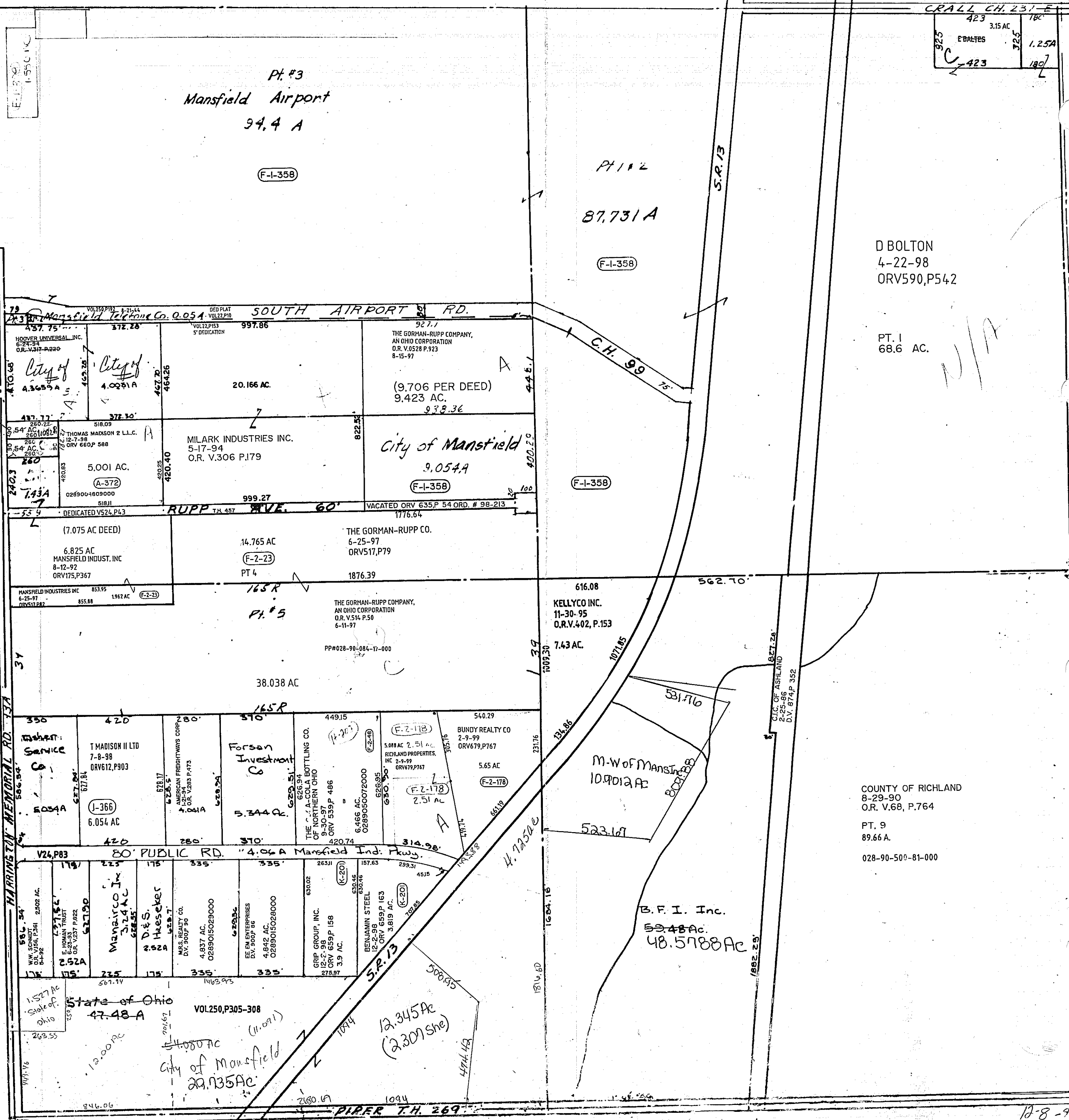
CRALL CH. 231 E
423 3.15 AC
EVALTES
325 1.25A
423 180

Pt. #3
Mansfield Airport
94.4 A

Pt. #2
87,731 A

D BOLTON
4-22-98
ORV590,P542

PT. 1
68.6 AC.



Y.B. N. C. M. D.
N/A
JULIEVSKI
8-5-98
ORV612,P459

COUNTY OF RICHLAND
8-29-90
O.R. V.68, P.764
PT. 9
89.66 A.
028-90-500-81-000

HARRISON MEMORIAL RD. 73A

V24,P83

State of Ohio
47.48 A

City of Mansfield
29.135 Ac

12.345 Ac
(2.307 She)

THO 21-R 18

Sec. 3

MADISON TWP. SE

12-8-99