

022814

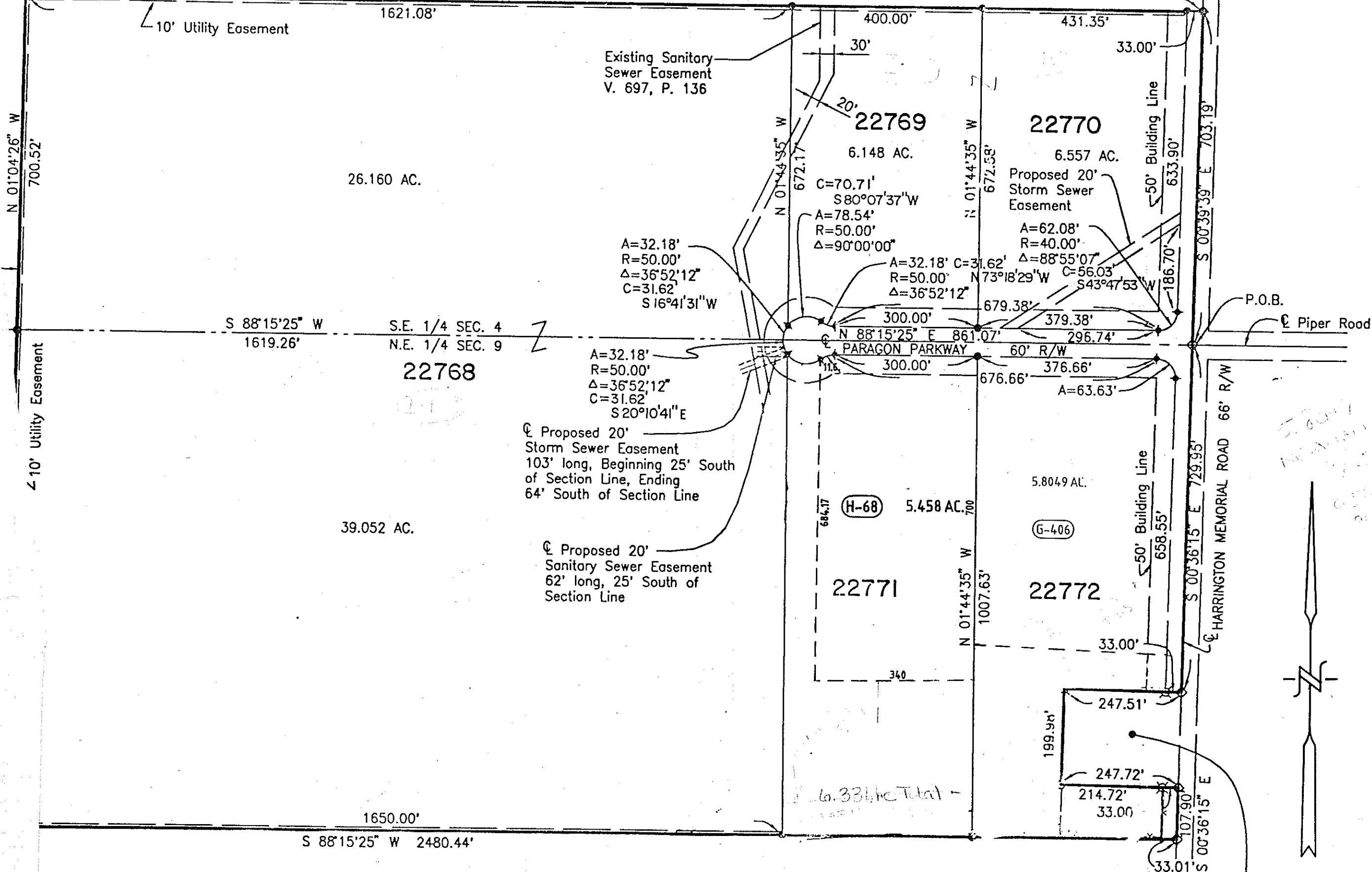
ARMCO INC.
%o TAX DEPARTMENT
300 INTERPACE PARKWAY
PARSIPPANY, NJ 07054

REPLAT OF ACREAGE AND PARAGON PARKWAY

ORIGINAL PLAT: VOLUME 26, PAGE 114

N 88°11'50" E 2485.43'

022814



PLAT VOL.26, PG. 139

4/58

11-13 00