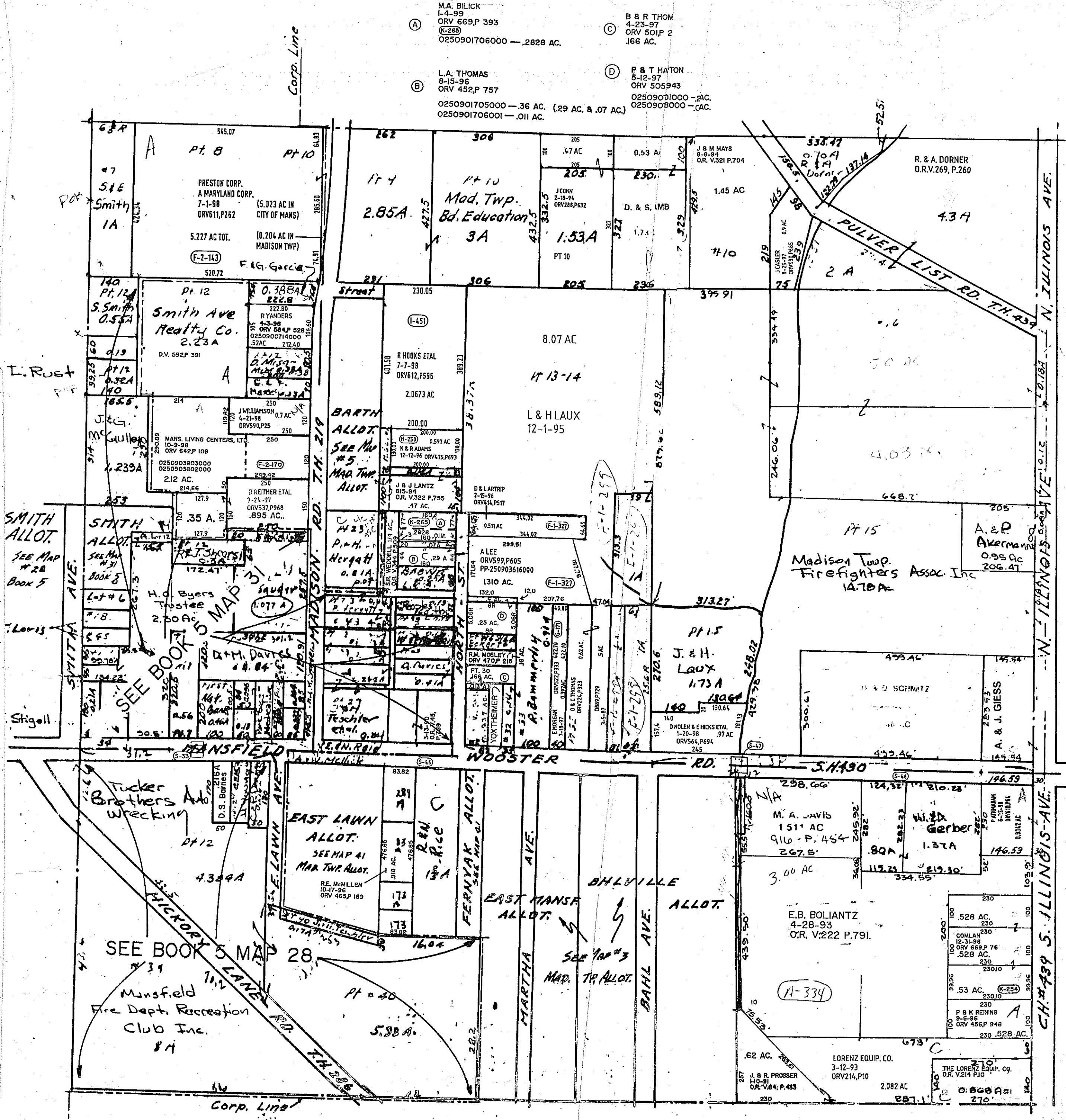


(A) M.A. BILICK
1-4-99
ORV 669P 393
(K-268)
0250901706000 — .2828 AC.

(C) B & R THOM
4-23-97
ORV 501P 2
.166 AC.

(B) L.A. THOMAS
8-15-96
ORV 452P 757
0250901705000 — .36 AC. (.29 AC. & .07 AC.)
0250901706001 — .011 AC.

(D) F & T HATON
5-12-97
ORV 505943
025090101000 — .2 AC.
0250908000 — .0 AC.



TWP. 21 R. 16

1"=200'

MADISON TWP
S.W. 1/4, SEC. 28
Scale 1"=200'

1.500