

Corp. Line

North Line NE Qr. Sect. 34

424.74

D. & A. MITCHELL
10-12-99
ORV. 752,P. 21

2AC. (L-278)

482.1
482.1

HOME SAVINGS & LOAN
8-2-01
ORV. 943,P. 206

10.249AC.

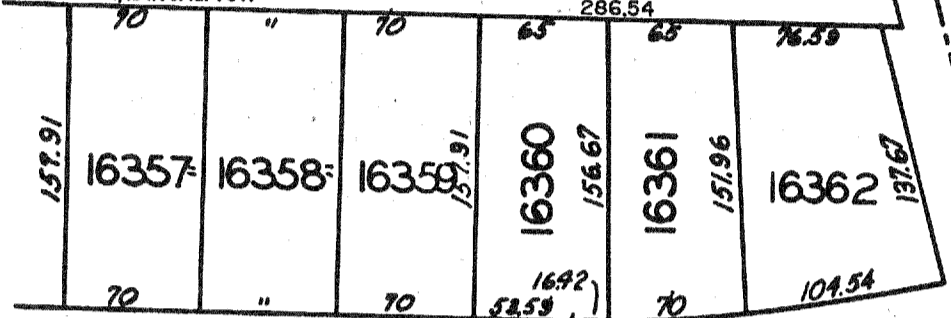
(L-278)

D.S. PATTERSON
6-1-99
ORV 713, P 580-582

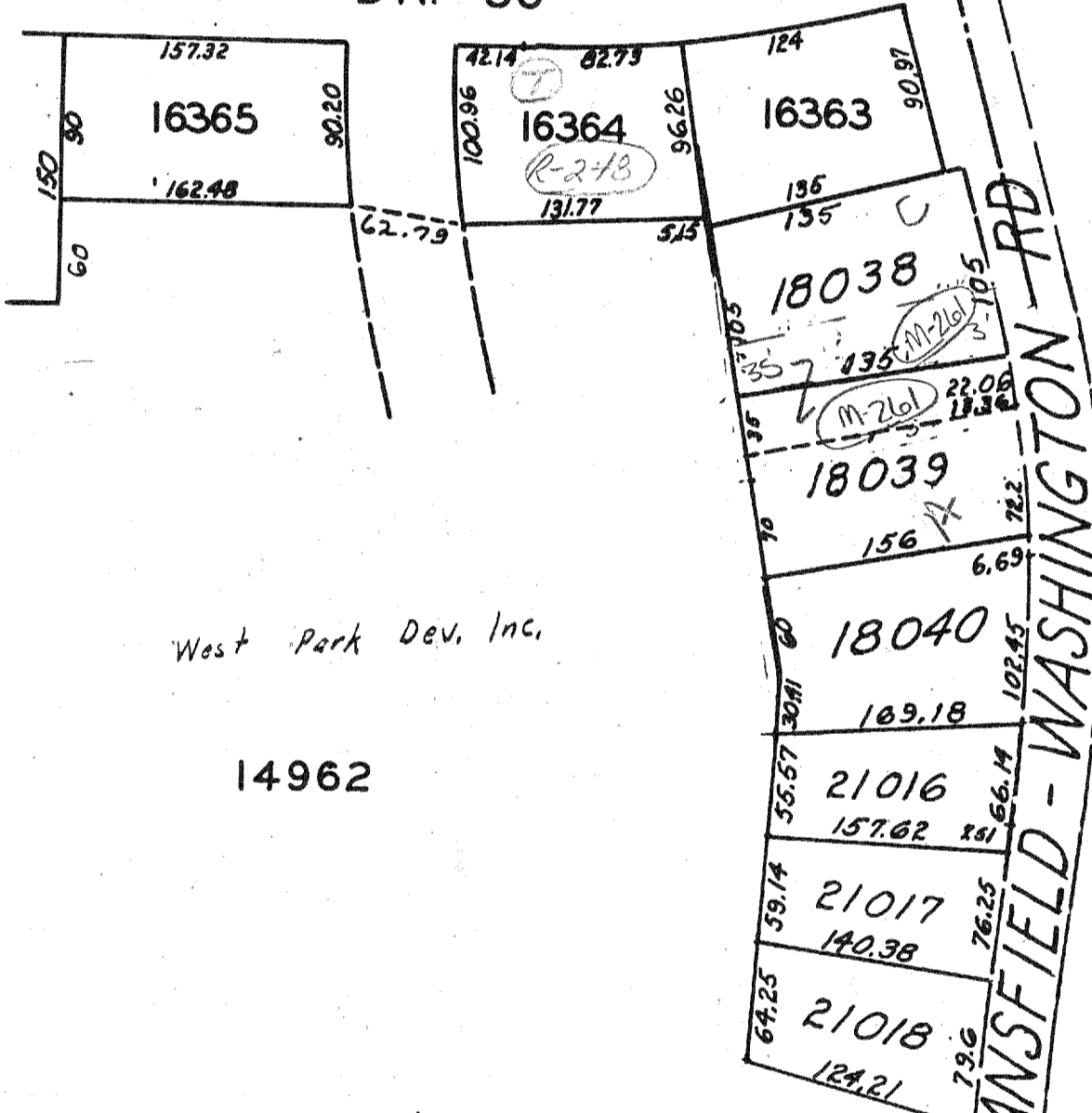
1,000 AC. (L-8)

1,151.06AC. TOT.

286.54



BRENDA DR. 60'



West Park Dev. Inc.

14962

14963

Corp. Line

Duanewood Sub. Lots # 18038-18040 Vol. 22, P-40
23. 44

6th WARD

24

8-3-01