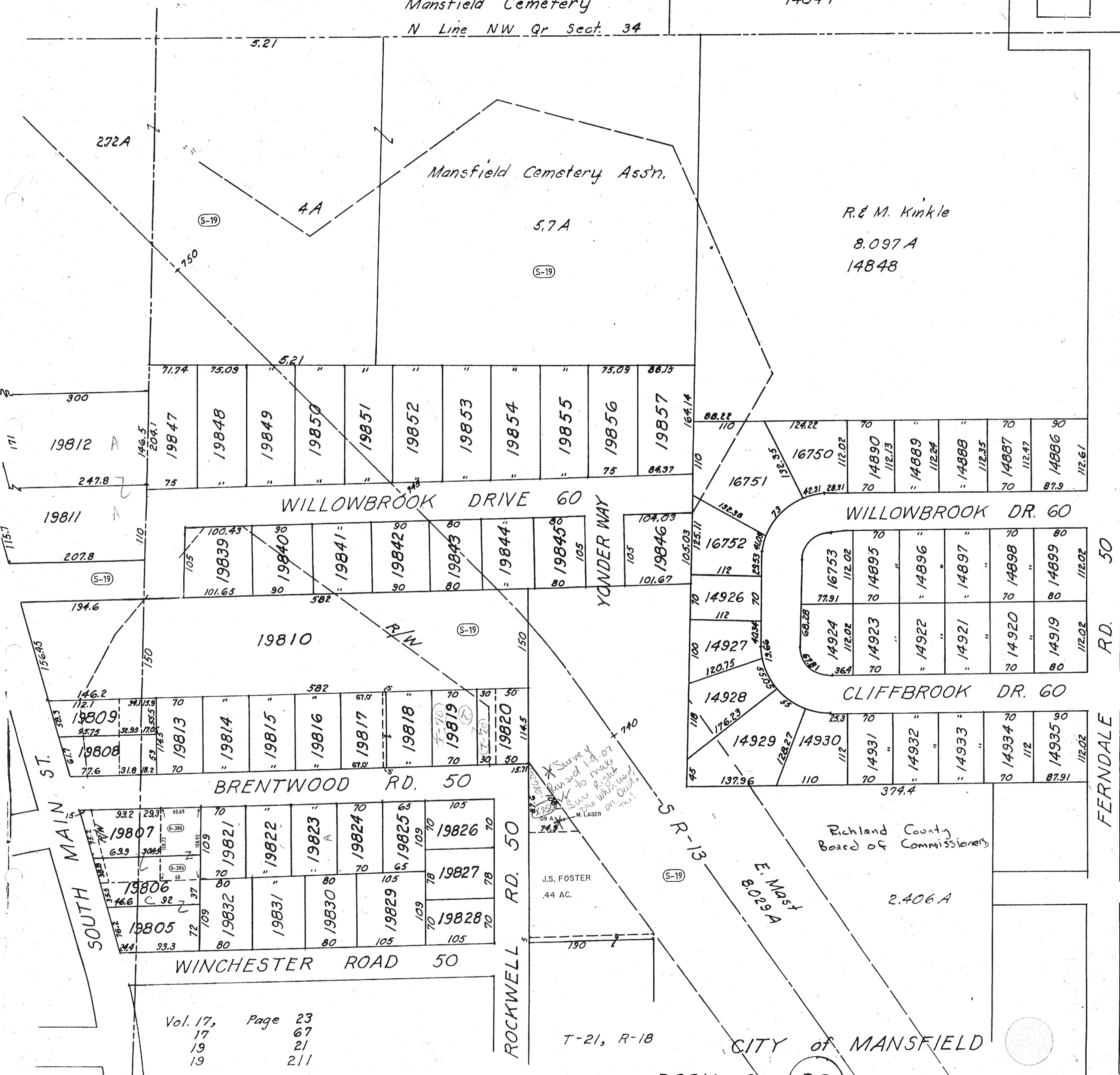


Mansfield Cemetery Ass'n.

R. & M. Kinkle
8.097 A
14848



Vol. 17, Page 23
17 67
19 21
19 211

Survey by
to make
one when
on

J.S. FOSTER
.44 AC.

Richland County
Board of Commissioners

2.406 A

T-21, R-18

CITY OF MANSFIELD

BOOK 6

22

6-25-98