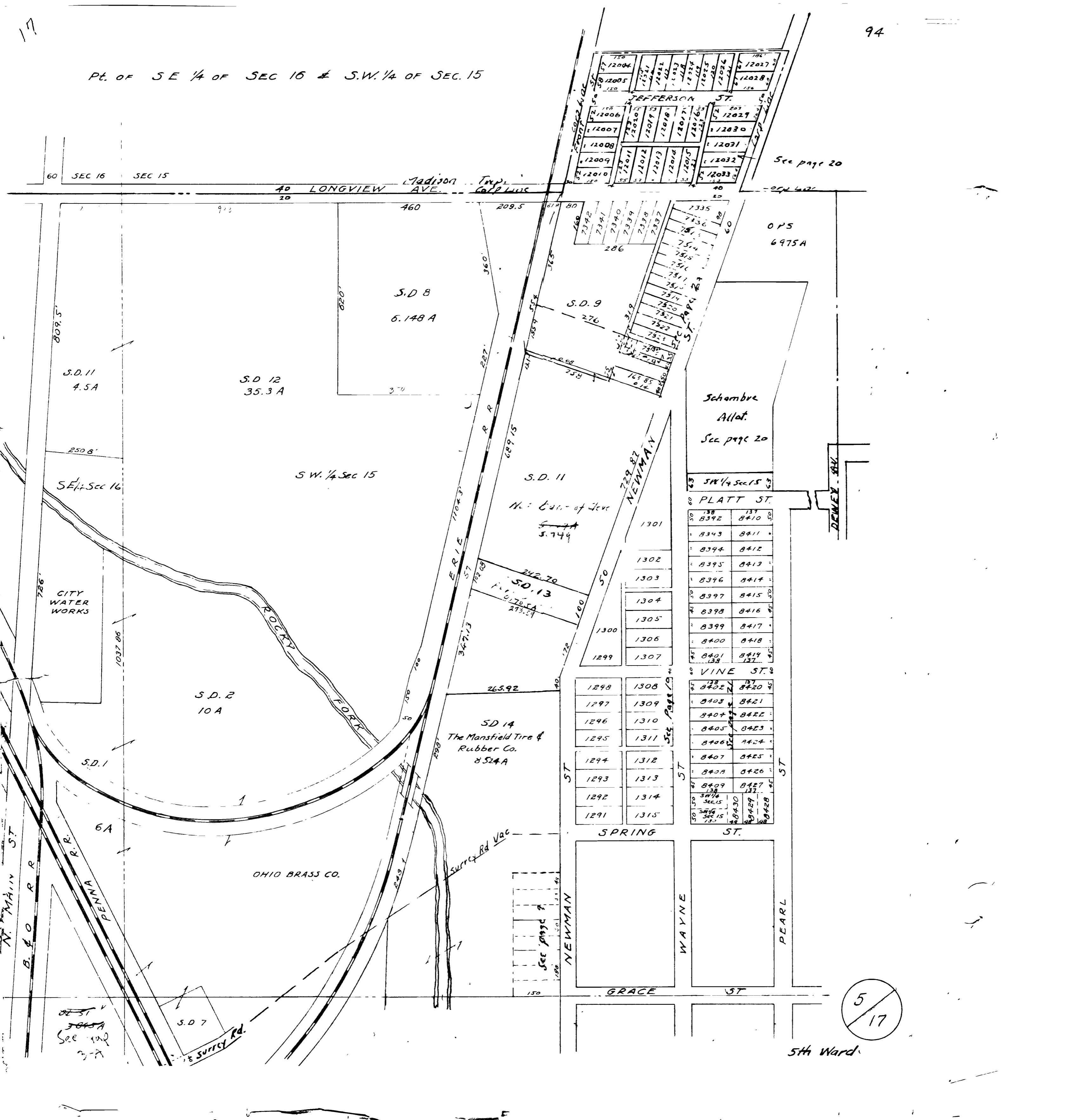
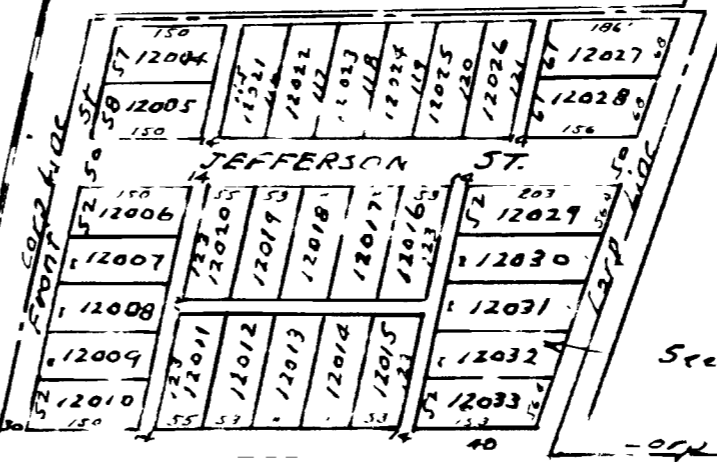


Pt. of S.E. 1/4 of SEC 16 & S.W. 1/4 of SEC. 15



60 SEC 16 SEC 15

40 LONGVIEW AVE. Madison Twp. COLLINS



See page 20

S.D. 8  
6.148 A

S.D. 9  
276

S.D. 11  
4.5A

S.D. 12  
35.3 A

Schambre  
Allot.  
See page 20

O.P.S.  
6975A

S.W. 1/4 Sec 15

S.D. 11

S.E. 1/4 Sec 16

No. E. 1/4 of Sec  
S.D. 11  
5.744

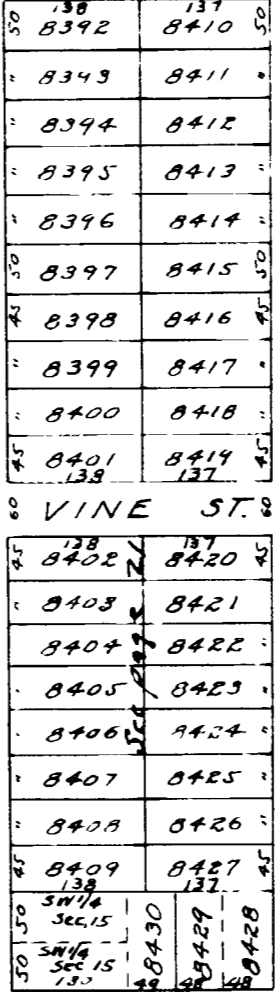
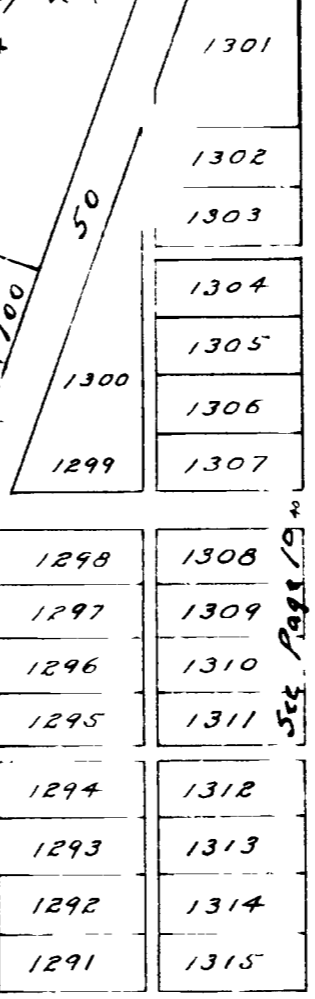
S.W. 1/4 Sec 15

PLATT ST.

CITY WATER WORKS

S.D. 2  
10A

S.D. 14  
The Mansfield Tire &  
Rubber Co.  
8.524A



VINE ST.

S.D. 1

OHIO BRASS CO.

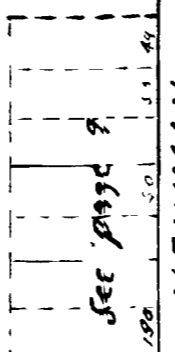
SPRING ST.

ST.



See page 19

S.D. 7



NEWMAN ST.

WAYNE ST.

PEARL ST.

GRACE ST.

ST.



5th Ward