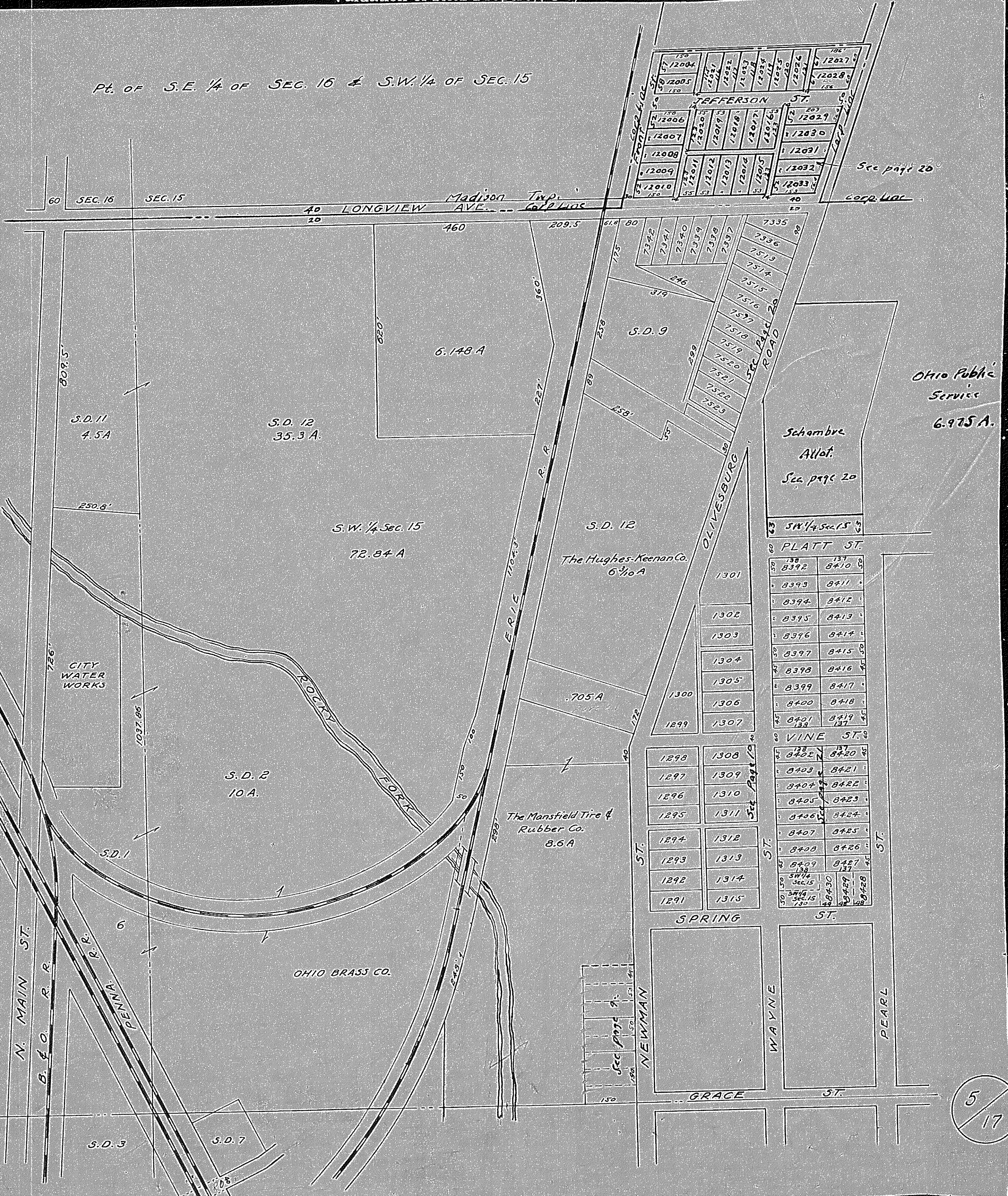


Valuation of Real Property, City of Mansfield

Pt. of S.E. 1/4 of SEC. 16 & S.W. 1/4 of SEC. 15



See page 20

Ohio Public Service  
6.975 A.

Schambre  
Allot.  
See page 20

PLATT ST.

VINE ST.

SPRING ST.

GRACE ST.