

CITY OF MANS
3-27-03, NAC
DV 718 P110
0210315104000

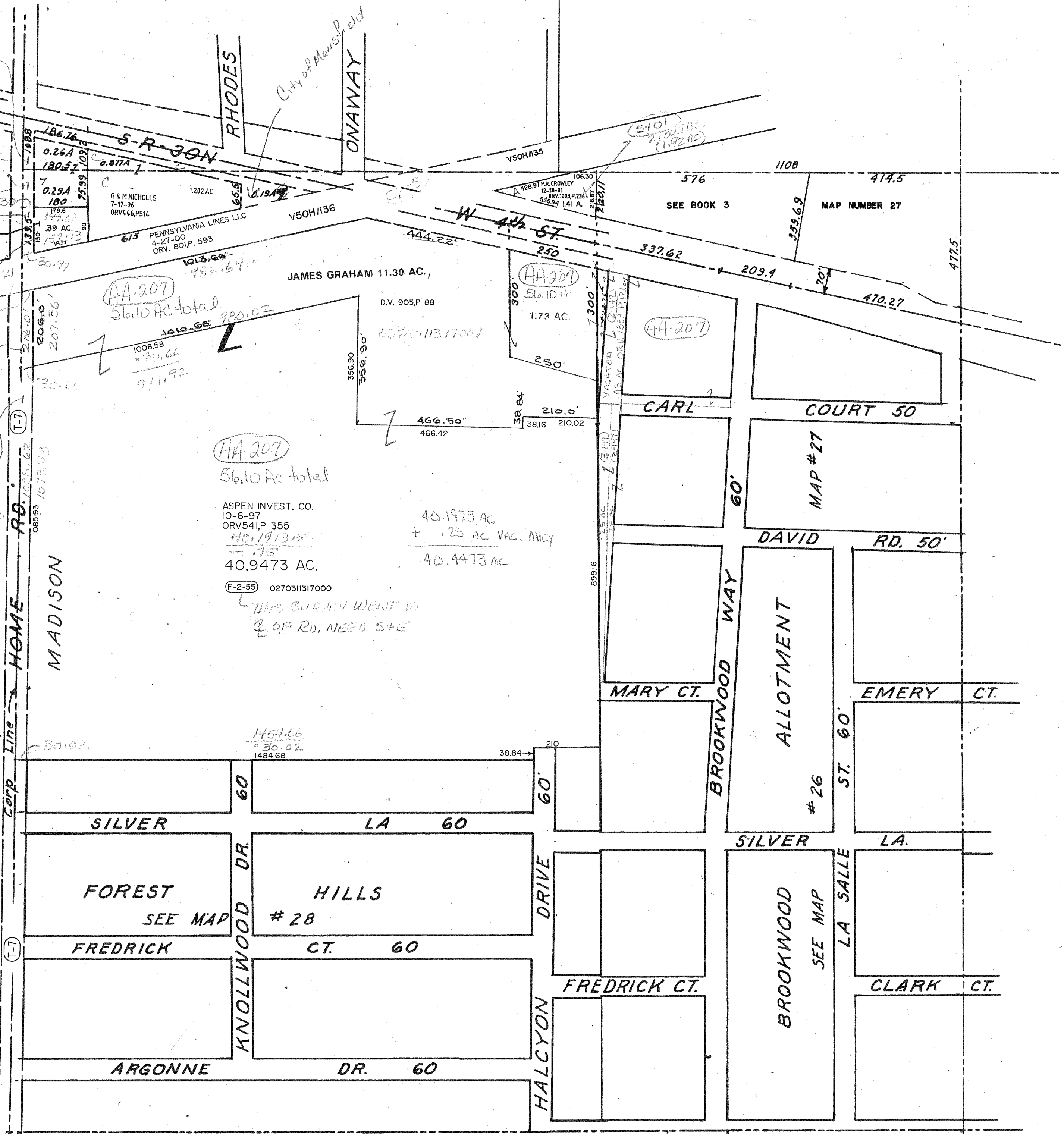
CITY OF MANS
3-27-75, 105AC
DV 718 P110
0210315101000

CITY OF MANS
3-27-75
DV 718 P110
0210315103000
T 18 OFFMISS
4-6-98
ORV 564, P 660
39 AC.
0210310603000

CITY OF MANS
3-27-75
DV 718 P116
0210315105000
14 AC.

CITY OF MANS
3-27-75
DV 718 P118
175 AC
0210315106000

SPRINGFIELD
ONTARIO VILLAGE



HA-207
56.10 AC total

ASPEN INVEST. CO.
10-6-97
ORV541, P 355
40.9473 AC.
(F-2-55) 0270311317000

THIS SURVEY WENT TO
C. OF RD. NEED STE.

T-21, R-18

CITY OF MANSFIELD
NW Qr. SECTION 19

3rd

31

12-3101