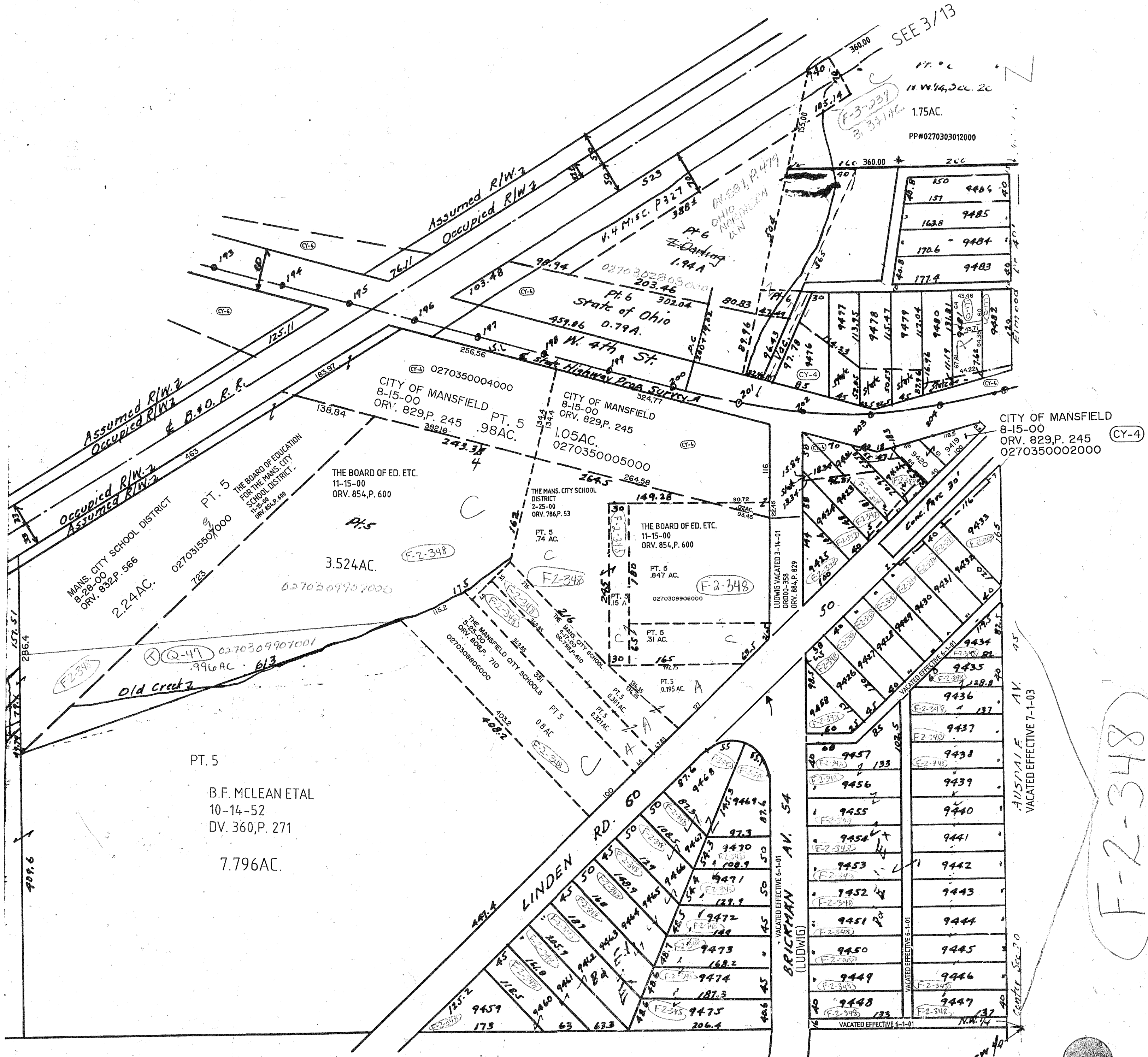


SEE 3/13

17.00
N.W. 1/4, Sec. 20
1.75AC.
PP#0270303012000



CITY OF MANSFIELD
8-15-00
ORV. 829, P. 245
0270350002000 (CY-4)

PT. 5
B.F. MCLEAN ETAL
10-14-52
DV. 360, P. 271
7.796AC.

F-2-348

VACATING PORTIONS OF AUSDALE, BRICKMAN, LUDWIG, AND VIRGINIA AVENUES AND VARIOUS UNNAMED ALLEYS IN THE AREA OF THE NEW HIGH SCHOOL PROPERTY.
ORV. 914, P. 470

3rd Ward 3/16

7-26-02

SEE MAP 3/18