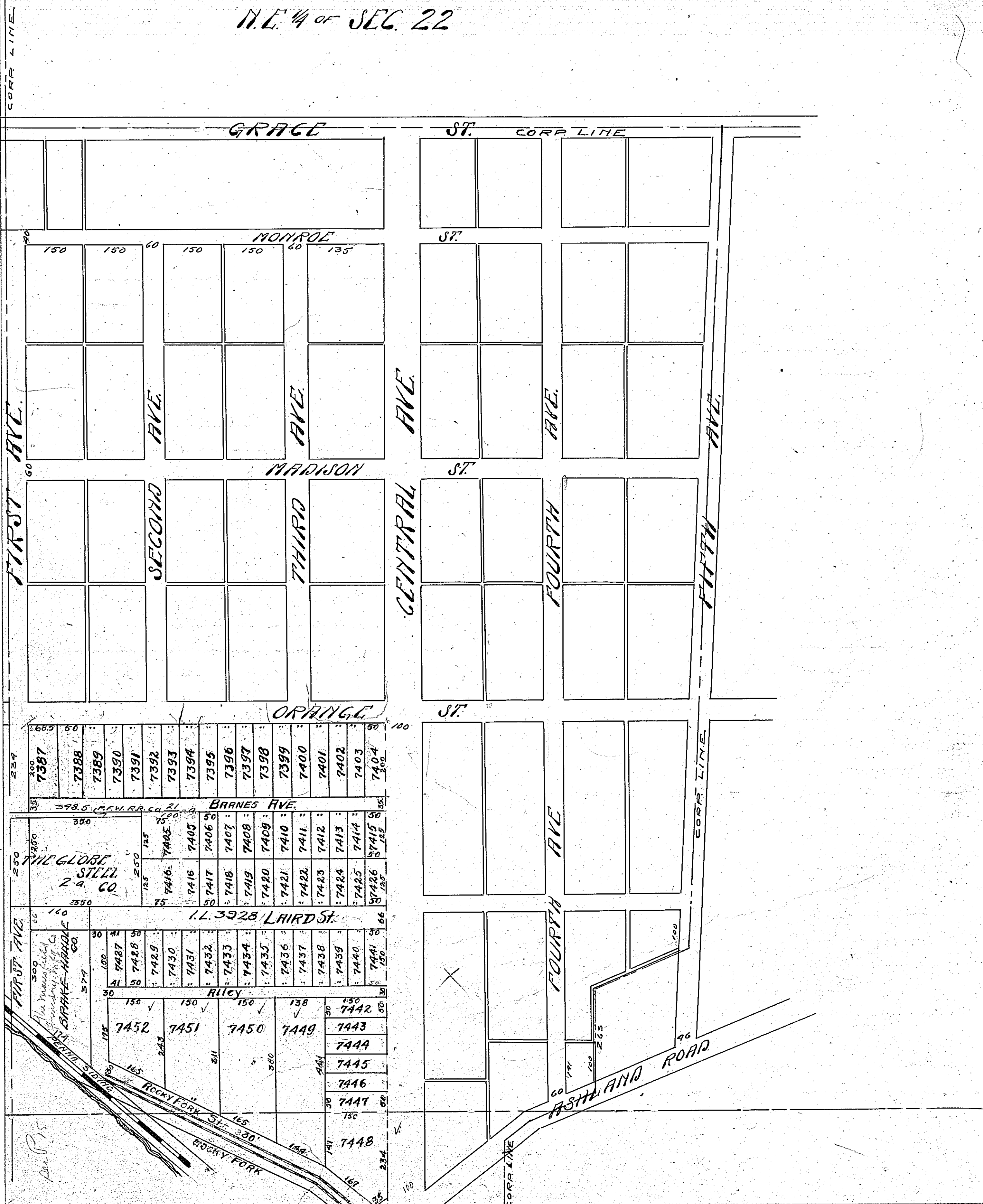


Valuation of Real Property, City of Mansfield,

N.E. 1/4 of SEC. 22



CORP LINE

GRACE ST.

CORP LINE

MONROE ST.

ST.

FIRST AVE.

SECOND AVE.

MADISON ST.

THIRD AVE.

CENTRAL AVE.

ST.

FOURTH AVE.

FIFTH AVE.

ORANGE ST.

ST.

BARNES AVE.

THE GLOBE STEEL CO.
2nd CO.

LAIRD ST.

BRAKE HANDLE CO.

RILEY

ROCKY FORK ST.

ROCKY FORK

ASHLAND ROAD

Per P.S.