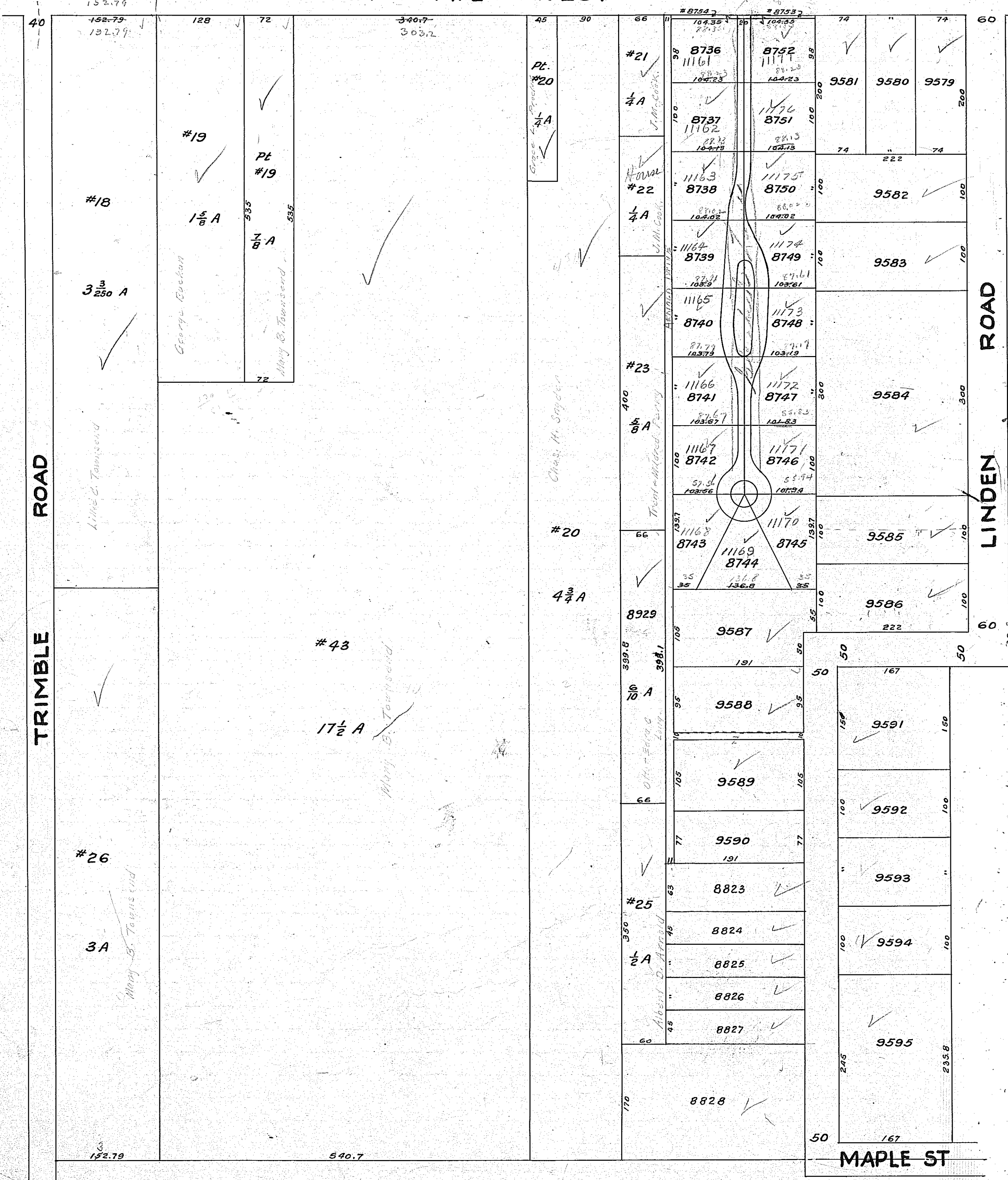


Valuation of Real Property, City of Mansfield

PARK AVE WEST



152.74

162.79  
132.79

128

72

340.7  
303.2

45

90

66

#8754  
104.35  
78.35

#8753  
104.35  
78.35

74

74

60

40

#18

3 3/250 A

Lillie C. Townsend

#19

1 5/8 A

George Eucken

Pl  
#19

535  
7/8 A  
535

Mary B. Townsend

72

#43

17 1/2 A

Mary B. Townsend

Pl.  
#20  
1/4 A

Chas. H. Snyder

#20

4 3/4 A

#21

1/4 A

Home

1/4 A

#23

5/8 A

#20

8929

10 A

#25

1/2 A

Albert D. Arnold

8736  
11161

8737  
11162

8738  
11163

8739  
11164

8740  
11165

8741  
11166

8742  
11167

8743  
11168

8744  
11169

9587

9588

9589

9590

8823

8824

8825

8826

8827

8828

8752  
11171

8751  
11170

8750  
11175

8749  
11174

8748  
11173

8747  
11172

8746  
11171

8745  
11170

9585

9586

9591

9592

9593

9594

9595

9581

9580

9582

9583

9584

9585

9586

9587

9588

9589

9590

9591

9592

9593

9594

9595

9596

9597

200

100

74

222

100

100

300

100

100

100

100

55

50

150

100

100

100

100

245

167

235.8

50

167

MAPLE ST

ROAD

TRIMBLE

ROAD

LINDEN

60

MAPLE ST