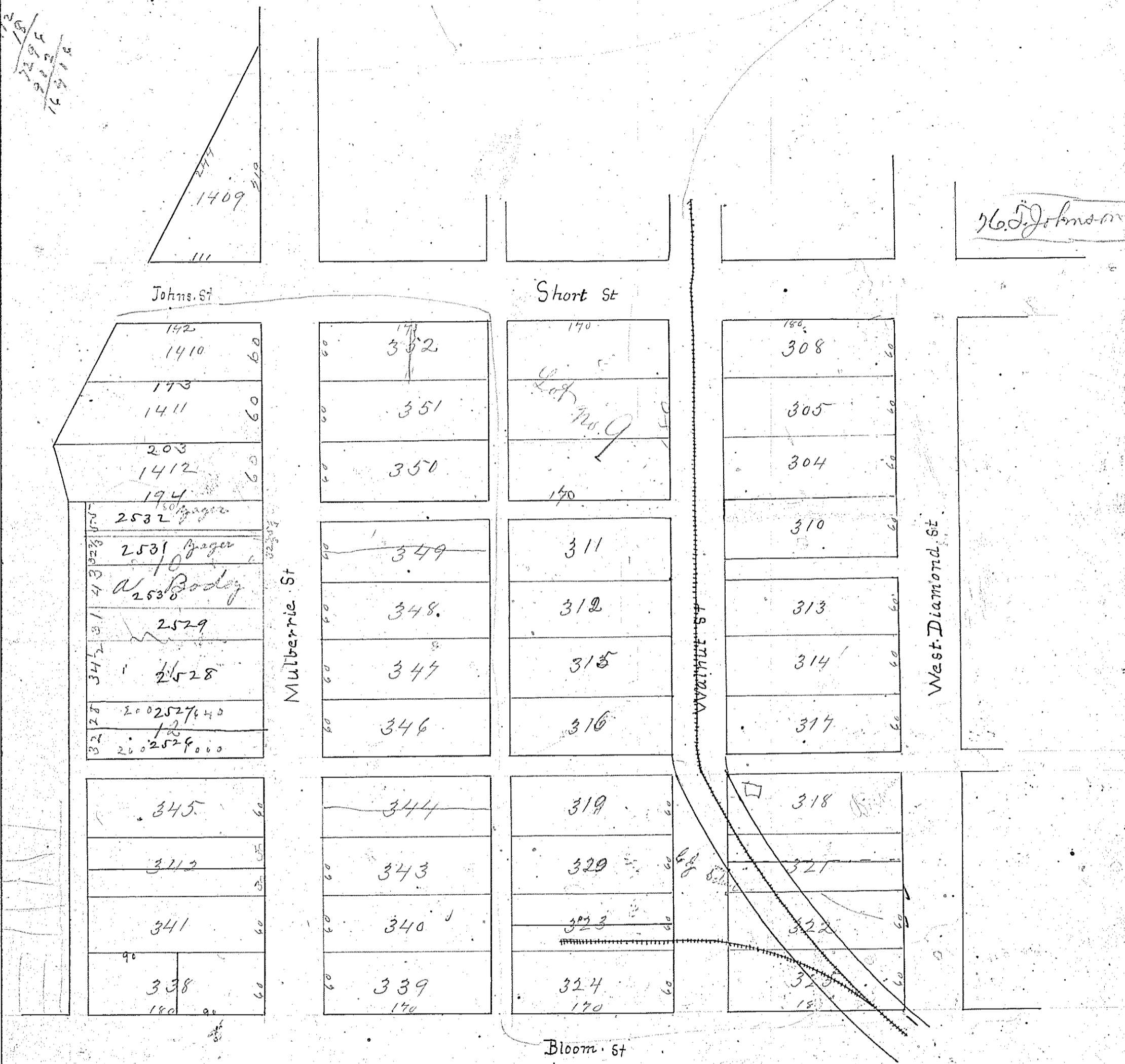
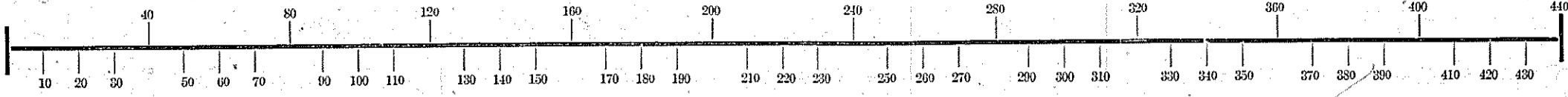


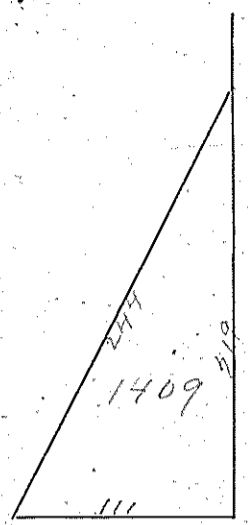
Assessment of Lots in the Town of

LOT

SCALE: Forty Feet to an Inch or Ten Feet to One-Quarter Inch.



Handwritten notes in the top left corner:
 $\frac{2190}{1640}$
 $\frac{550}{1640}$
 $\frac{1540}{1640}$



Handwritten list of numbers along Mulberry St:
 142
 1410
 173
 1411
 203
 1412
 194
 2532
 2531
 2530
 2529
 2528
 202527640
 202529000

Mulberry St

Short St

Handwritten notes in the middle column:
 352
 351
 350
 349
 348
 347
 346

Bloom St

West Diamond St

16.5 Johnson

Handwritten calculations at the bottom left:
 $\frac{154}{2} = 77$
 $\frac{160}{2} = 80$
 $\frac{170}{2} = 85$
 $\frac{180}{2} = 90$
 $\frac{190}{2} = 95$
 $\frac{200}{2} = 100$
 2 5-6 7

Handwritten calculations at the bottom right:
 1550
 730
 820