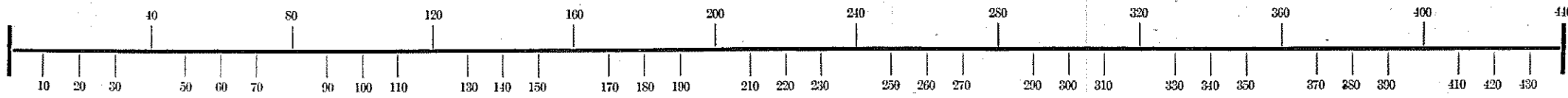


Lot,

$\frac{2}{10} \frac{325}{4}$

Scale, 40 Feet to an Inch, or 10 Feet to 1-4 Inch.



$\frac{2}{660} \frac{1320}{}$

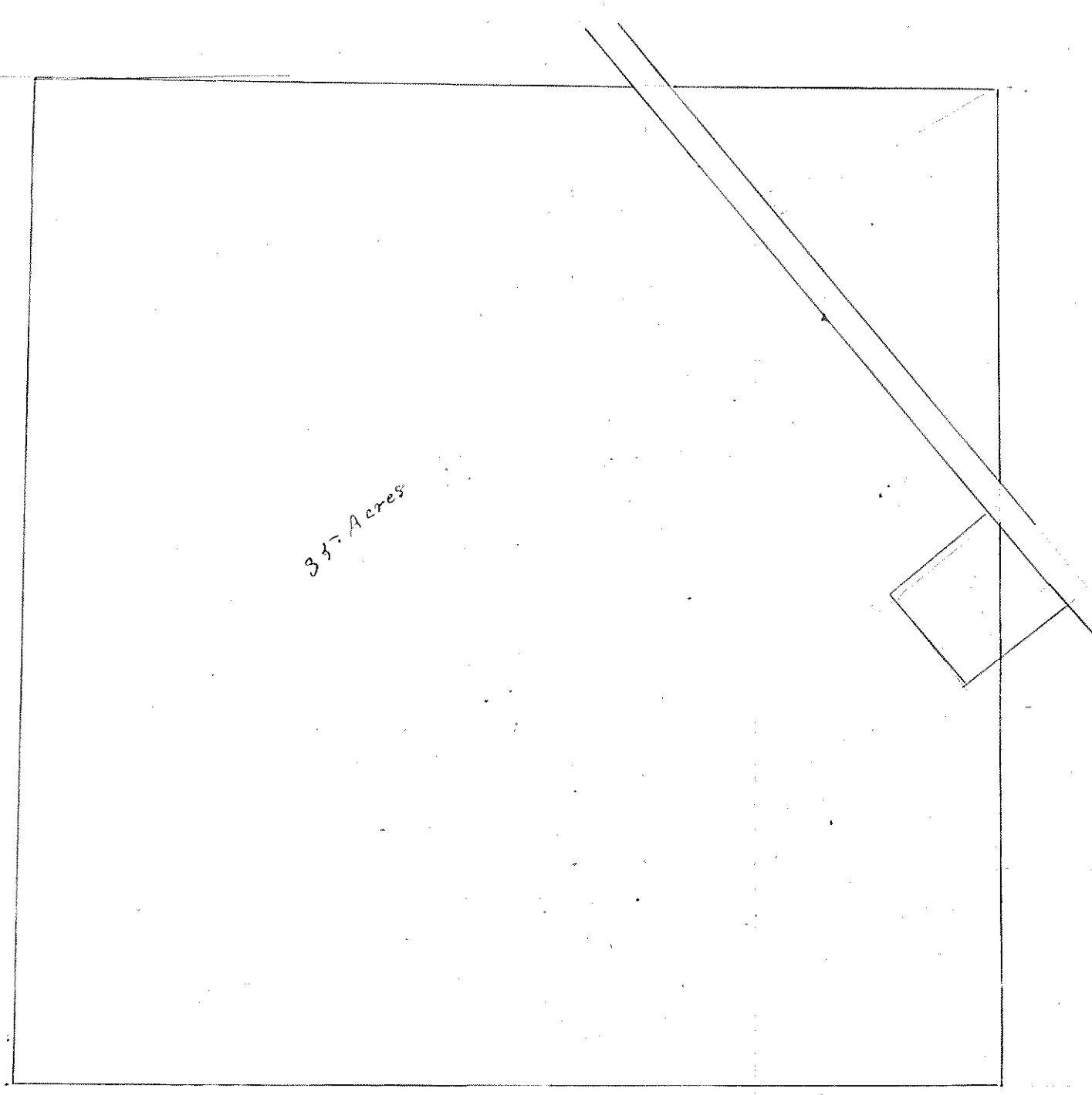
$\frac{150}{120} \frac{1320}{120} \frac{8.8}{}$

$\frac{3}{48} \frac{136}{}$

$\frac{15}{136} \frac{19}{}$

$\frac{3}{126} \frac{374}{}$

$\frac{3}{74} \frac{231}{}$



3.5 Acres