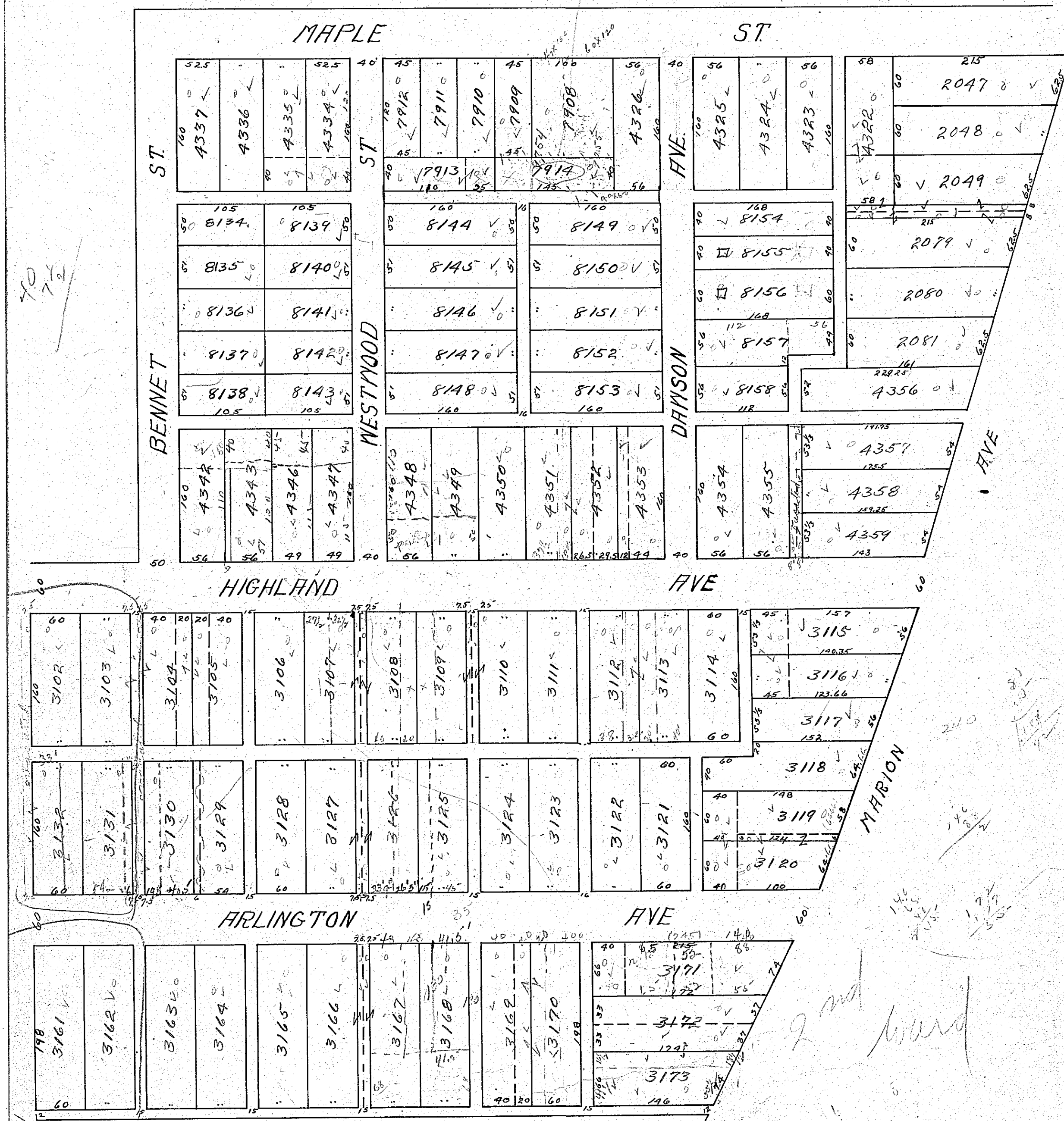


Valuation of Real Property, City of Mansfield,

26



70  
74

Take out

210

2nd ward

Handwritten calculations and notes at the bottom of the page:

- $33.9$
- $6.33$
- $10.12$
- $47.0$
- $46.0$
- $3.7$
- $40.5$
- $19.5$
- $60.0$
- $33.7$
- $40.6$
- $1.13$
- $19.8$
- $13.0$
- $2.8$
- $110.5$
- $45.1$
- $165.0$