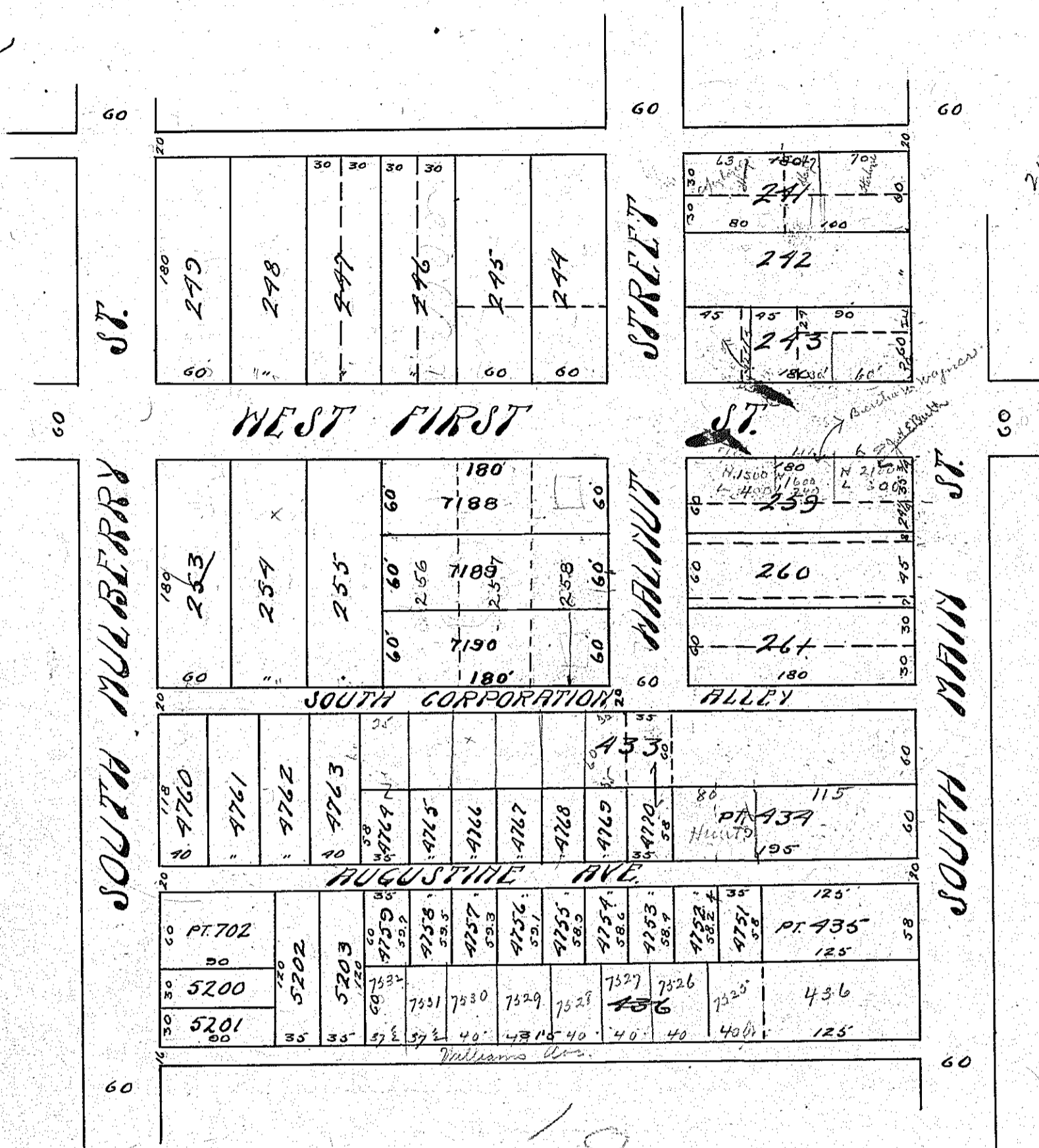


Valuation of Real Property, City of Mansfield,



Lots 256, 257, 258 replatted.

$\frac{104}{4} = 26$
 $\frac{4}{5}$
90

700
47
17

24 1/4

24 1/4
24 1/4
24 1/4

$\frac{24 1/4}{3} = 8.13$
 $\frac{6.00}{1} = 6.00$

$\frac{24 1/4}{3} = 8.13$
 $\frac{24 1/4}{3} = 8.13$

70

70
47
117
62