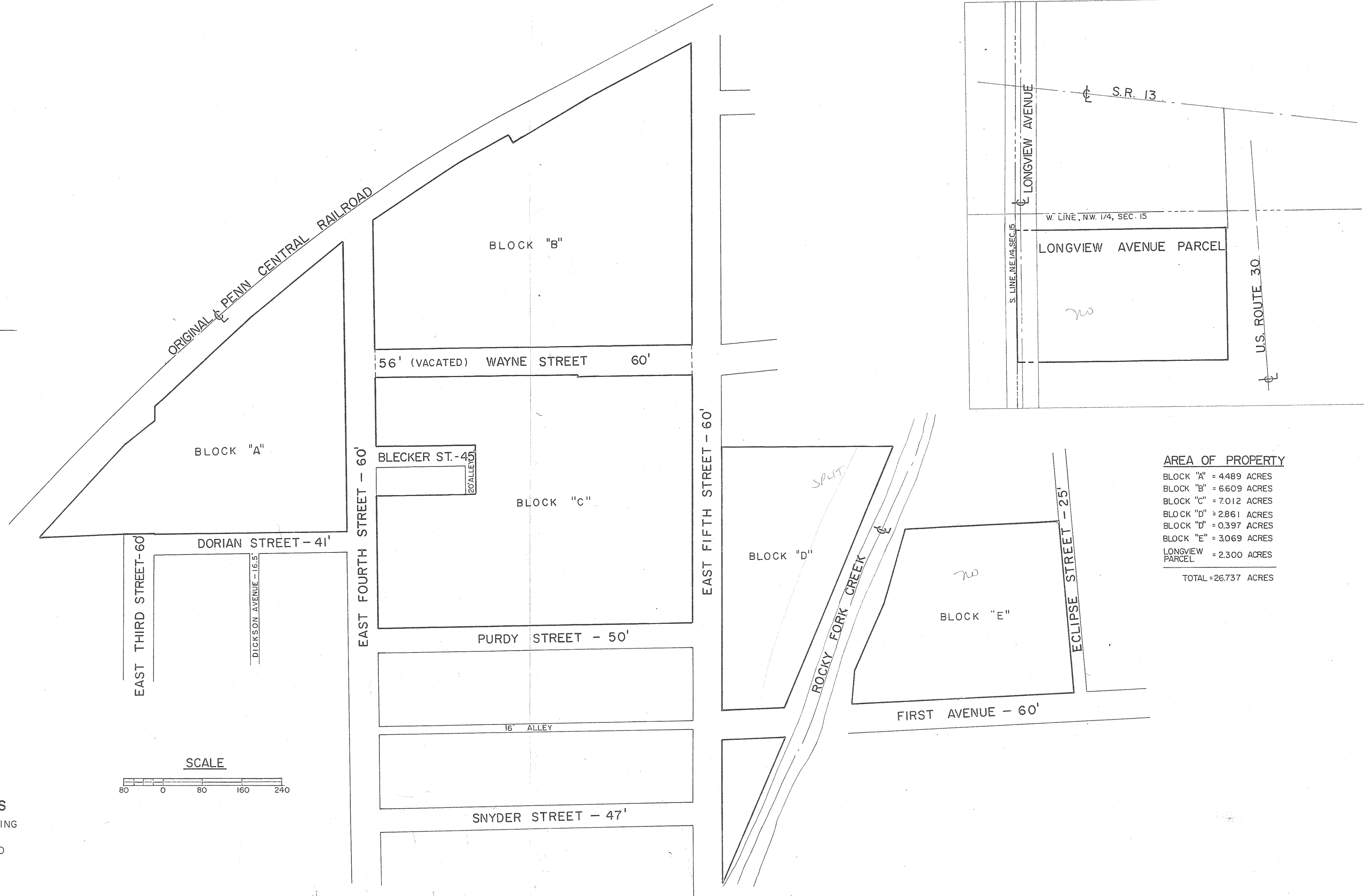
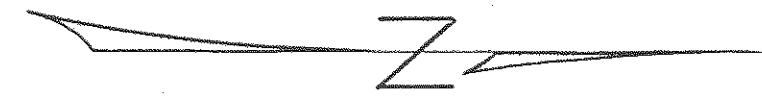
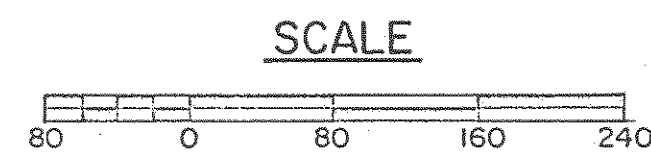


PLAT OF PROPERTY AND LOCATION SURVEY  
**WESTINGHOUSE ELECTRIC CORPORATION**  
 TO  
**WHITE CONSOLIDATED INDUSTRIES, INC.**  
 CITY OF MANSFIELD, RICHLAND COUNTY, OHIO



**AREA OF PROPERTY**

BLOCK "A"	= 4489 ACRES
BLOCK "B"	= 6609 ACRES
BLOCK "C"	= 7012 ACRES
BLOCK "D"	= 2861 ACRES
BLOCK "E"	= 0.397 ACRES
LONGVIEW PARCEL	= 2,300 ACRES
<b>TOTAL</b>	<b>= 26,737 ACRES</b>



PREPARED BY  
**F. E. KROCKA & ASSOCIATES**  
 MUNICIPAL ADMINISTRATIVE OFFICE BUILDING  
 23 W. MAIN STREET  
 SHELBY OHIO