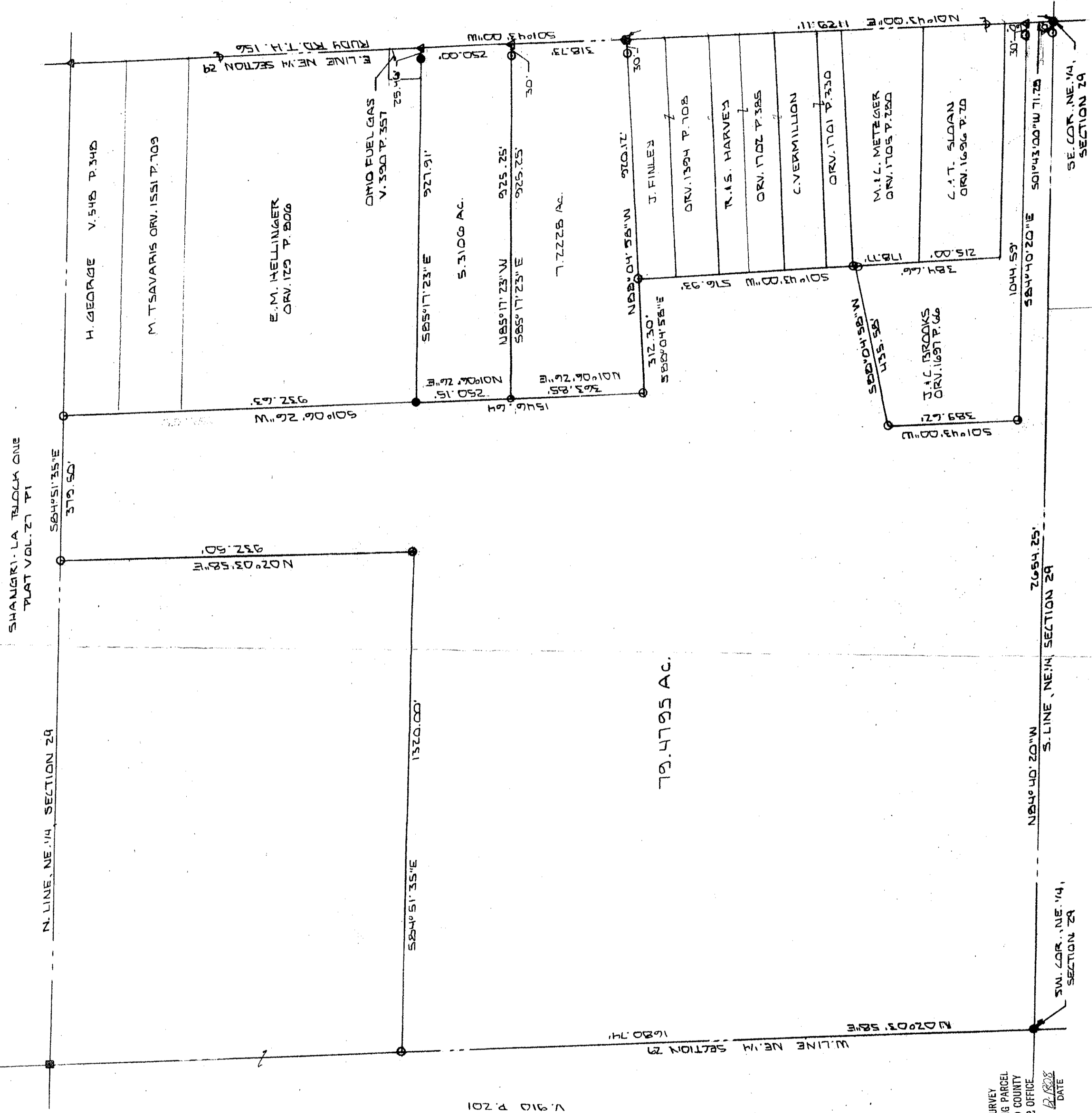


Springfield Twp
 2116
 2116



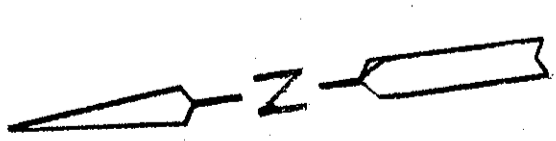
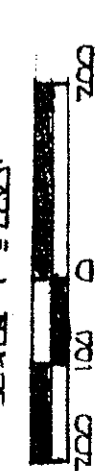
**PLAT OF SURVEY
 FOR
 MARSHA PALMER**

BEING PART OF THE NORTHEAST 1/4,
 SECTION 29, TOWNSHIP 21, RANGE 19,
 SPRINGFIELD TOWNSHIP, RICHLAND
 COUNTY, OHIO, DEC. 3, 2008

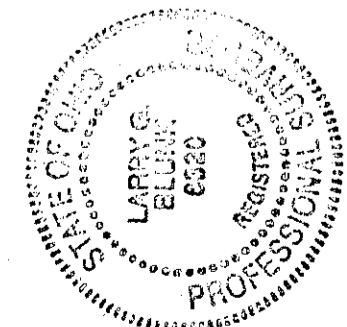
LEGEND

- FENCE POST FD.
 - P.R. SPIKE PD.
 - ▲ 2" MAG NAIL SET
 - ▲ 2" MAG NAIL PD
 - IRON PIN FOUND
 - IRON PIN SET AND
 LAPPED "BOLLUMK #6320"
 - LAPPED "BOLLUMK #6320"
- BASIS OF BEARINGS: SURVED
 253833-31-51

SCALE 1" = 200'



BY *David A. Dent*
 DARRYL G. TELUNA, #6320



NEW SURVEY
 OF EXISTING PARCEL
 RICHLAND COUNTY
 TAX MAP OFFICE
 INITIAL: DA DATE: 12/18/08

NEW SPLIT
 RICHLAND COUNTY
 TAX MAP OFFICE
 INITIAL: DA DATE: 12/18/08

SHANGRI-LA BLOCK ONE
 PLAT VOL. 27 P. 1

N. LINE, NE. 1/4, SECTION 28

S64°51'35"E
 379.50'

N 02°03'58"E
 937.50'

S84°51'35"E
 1370.00'

79.4795 AC.

W. LINE, NE. 1/4, SECTION 29
 N 02°03'58"E
 1620.74'

S. LINE, NE. 1/4, SECTION 28
 2654.25'

N84°40'20"W

SW. COR., NE. 1/4,
 SECTION 29

W. SLOPODA
 ORV. 187 P. 437

S. LINE, NE. 1/4,
 SECTION 29

S64°40'20"E
 501°43'00"W 71.75'

SE. COR., NE. 1/4,
 SECTION 29

H. GEORGE
 V. 548 P. 348

M. TSAVARIS
 ORV. 1551 P. 709

E.M. HELLINGER
 ORV. 125 P. 806

O.M.V. FUEL GAS
 V. 390 P. 357

5.3100 AC.

925.25'
 925.25'

7.2228 AC.

J. FINLEY
 ORV. 1394 P. 708

T.A.S. HARVEY
 ORV. 1702 P. 388

C. VERMILLION
 ORV. 1701 P. 330

M.L. METZGER
 ORV. 1705 P. 280

C.A.T. SLOAN
 ORV. 1696 P. 70

J.A.C. BROOKS
 ORV. 1697 P. 66