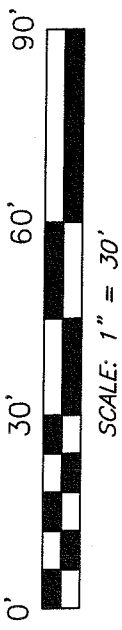
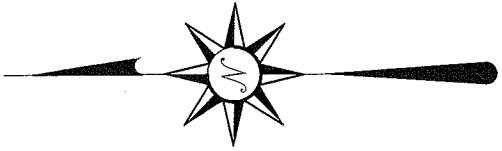
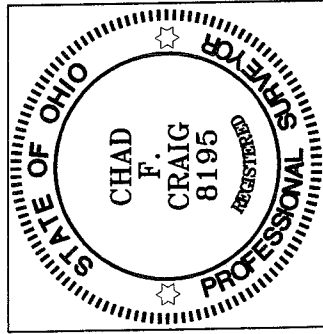
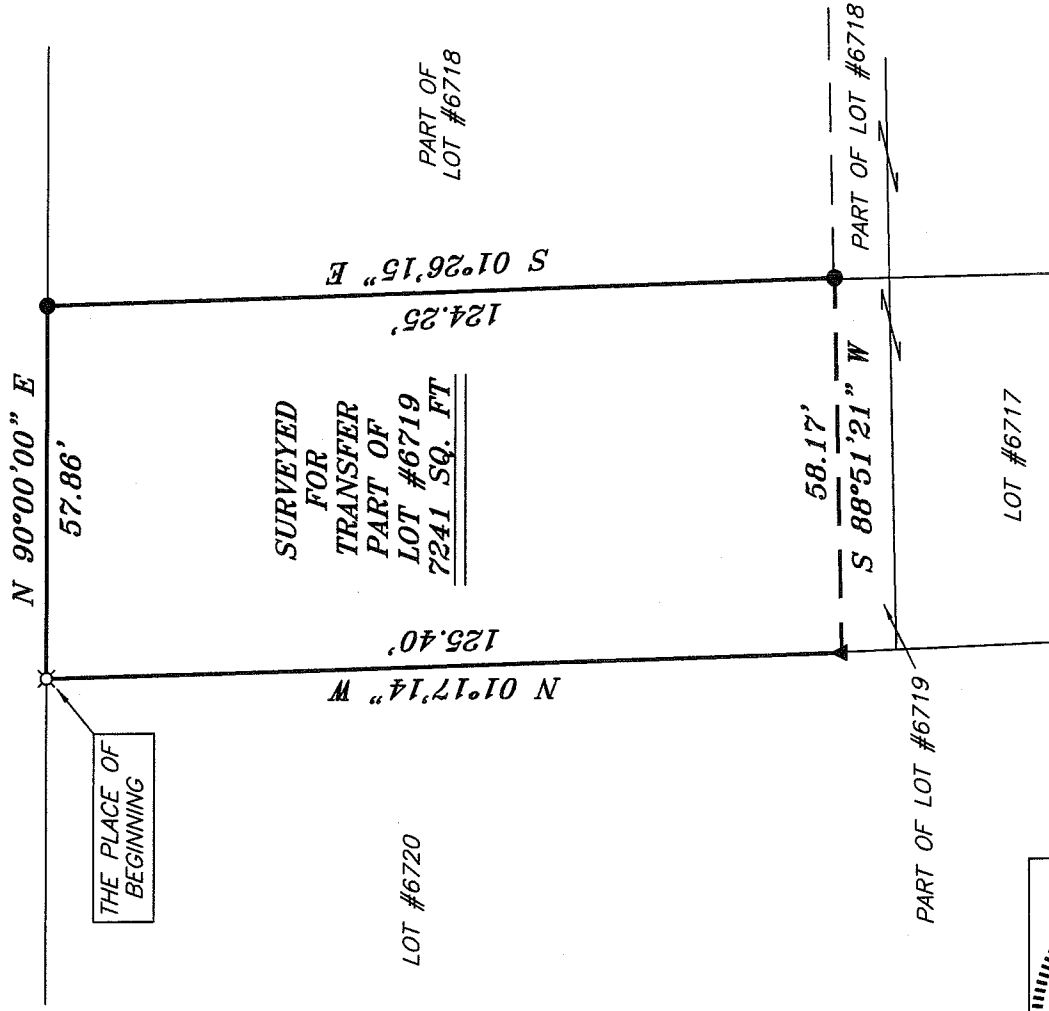


NOTED



BEARINGS ARE BASED ON SURVEY J-167 ON FILE AT THE RICHLAND COUNTY TAX MAP OFFICE AND ARE INTENDED TO BE USED FOR ANGULAR DETERMINATION ONLY.

WEST THIRD STREET 60' R/W



NEW SURVEY OF EXISTING PARCEL
RICHLAND COUNTY
TAX MAP, OFFICE
MLB 8-13-08
INITIAL DATE

LEGEND

- IRON PIN FOUND
- ⊠ 5/8" IRON PIN SET WITH CAP STAMPED "SEILER AND CRAIG, INC."
- ▲ RAILROAD SPIKE FOUND

Chad F. Craig

SURVEY BY: CHAD F. CRAIG PS #8195
for SEILER & CRAIG SURVEYING INC.
52-1/2 NORTH MAIN STREET
MANSFIELD, OHIO 44902
(419) 525-3644
FAX (419) 525-3696

SURVEY PLAT FOR
STEPHEN FLANNERY
PART OF LOT #6719
CITY OF MANSFIELD
OHIO
DATE: AUGUST 12, 2008
SCALE: 1" = 30'
375w3rd.asc/.dwg

2-306

SEILER & CRAIG SURVEYING, INC.

Douglas C. Seiler, PS & Chad F. Craig, PS

52 1/2 North Main Street

Mansfield, Ohio 44902

419-525-3644 Fax: 419-525-3696

www.seilerandcraig.com

SURVEY DESCRIPTION

PART OF LOT #6719
CITY OF MANSFIELD, OHIO

Situated in the City of Mansfield, County of Richland, State of Ohio and being a part of Lot #6719 of the consecutively numbered lots in said city, and being more particularly described as follows:

Beginning for the same at an iron pin set marking the northwest corner of said lot; Thence, North 90 degrees 00 minutes 00 seconds East with the north line of said lot, a distance of 57.86 feet to an iron pin found and accepted as marking the northeast corner thereof;

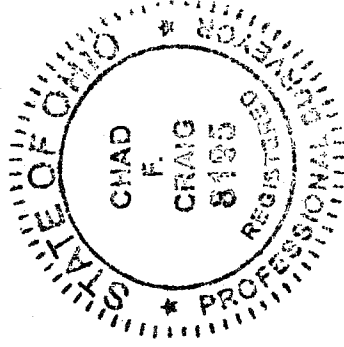
Thence, South 01 degree 26 minutes 15 seconds East with the east line of said lot, a distance of 124.25 feet to an iron pin found;

Thence, South 88 degrees 51 minutes 21 seconds West a distance of 58.17 feet to a railroad spike found and accepted as marking an existing property corner, said spike being located on the west line of said lot;

Thence, North 01 degree 17 minutes 14 seconds West with said west line, a distance of 125.40 feet to the place of beginning, containing 7241 square feet, according to survey by Chad F. Craig, Professional Surveyor #8195, on August 12, 2008.

Iron pins set are 5/8" rods with caps stamped "SEILER AND CRAIG INC."

Bearings are based on Survey J-167 on file at the Richland County Tax Map Office and are intended to be used for angular determination only.



Chad F. Craig

Chad F. Craig PS #8195

for Seiler & Craig Surveying, Inc.

NEW SURVEY
OF EXISTING PARCEL
RICHLAND COUNTY
TAX MAP OFFICE

CMC
INITIAL

8/13/08
DATE

2-306