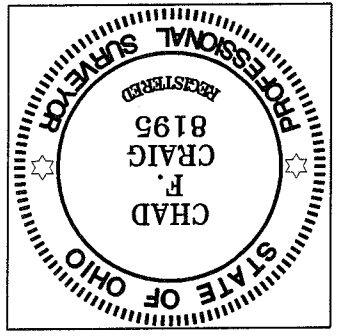


SURVEY PLAT FOR PROPERTY TRANSFER
 SMITH - TO - OYSTER
 PART NE QTR. SECT. 5, T-19N, R-18W
 VILLAGE OF BELLVILLE
 RICHLAND COUNTY, OHIO
 DATE: AUGUST 7, 2008 SCALE: 1"=50'
 OYSTER.ASC/DWG

● IRON PIN FOUND
 ⊗ 5/8" IRON PIN SET WITH CAP
 "STAMPED" SEALER AND CRAIG, INC."

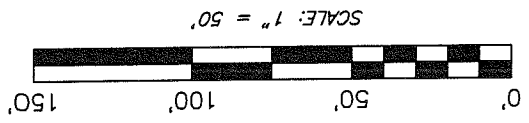
LEGEND



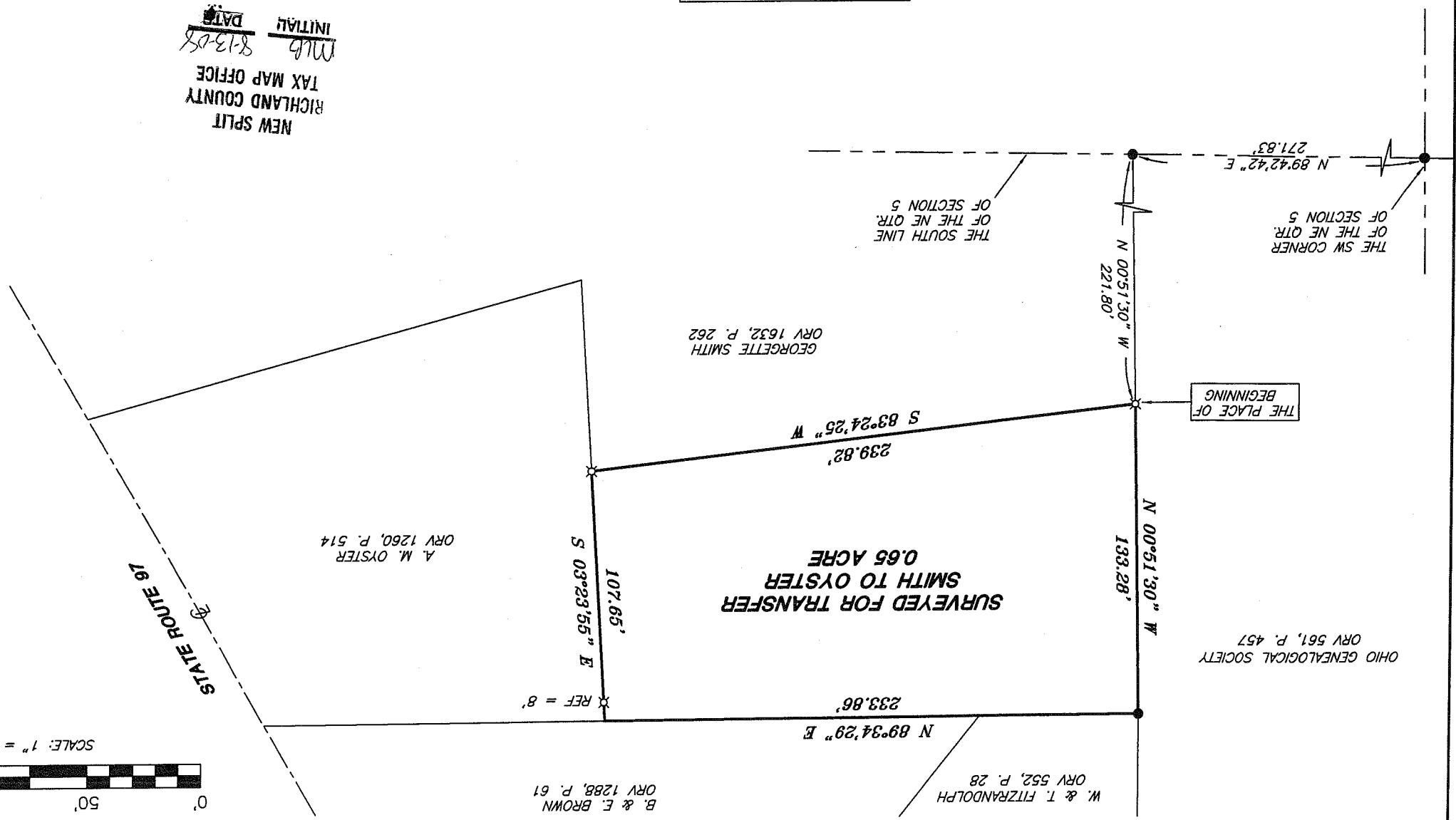
SURVEY BY: *Chad F. Craig*
 CHAD F. CRAIG PS #8195
 for SEALER & CRAIG SURVEYING INC.
 52-1/2 NORTH MAIN STREET
 MANSHFIELD, OHIO 44902
 (419) 525-3644
 FAX (419) 525-3696

NEW SPLIT
 RICHLAND COUNTY
 TAX MAP OFFICE
MLB INITIAL
8-13-08 DATE

BEARINGS ARE BASED ON SURVEY
 S-6 ON FILE AT THE RICHLAND
 COUNTY TAX MAP OFFICE AND ARE
 INTENDED TO BE USED FOR ANGULAR
 DETERMINATION ONLY.



North Arrow



SEILER & CRAIG SURVEYING, INC.

Douglas C. Seiler, PS & Chad F. Craig, PS
52 1/2 North Main Street
Mansfield, Ohio 44902
419-525-3644 Fax 419-525-3696
www.seilerandcraig.com

SURVEY DESCRIPTION

PART NE QUARTER SECTION 5
VILLAGE OF BELLVILLE
RICHLAND COUNTY, OHIO

Situated in the Village of Bellville, County of Richland, State of Ohio and being a part of the Northeast Quarter of Section 5, of Township 19 North, Range 18 West, and being more particularly described as follows:

Commencing at an iron pin found and accepted as marking the southwest corner of said quarter; Thence, North 89 degrees 42 minutes 42 seconds East with the south line of said quarter, a distance of 271.83 feet to an iron pin found; Thence, North 00 degrees 51 minutes 30 seconds West a distance of 221.80 feet to an iron pin set, said iron pin being the place of beginning of the parcel herein described;

Thence, continuing North 00 degrees 51 minutes 30 seconds West a distance of 133.28 feet to an iron pin found;

Thence, North 89 degrees 34 minutes 29 seconds East a distance of 233.86 feet to the northwest corner of a parcel currently owned by A. M. Oyster (deed reference: ORV 1260, page 514), as referenced by an iron pin set on a bearing of South 03 degrees 23 minutes 55 seconds East and at a distance of 8.00 feet from said corner;

Thence, South 03 degrees 23 minutes 55 seconds East with the west line of said Oyster parcel, passing through the afore-mentioned iron pin at 8.00 feet, a total distance of 107.65 feet to an iron pin set;

Thence, South 83 degrees 24 minutes 25 seconds West a distance of 239.82 feet to the place of beginning, containing 0.65 of an acre, according to survey by Chad F. Craig, Professional Surveyor #8195 for Seiler & Craig Surveying, Inc., on August 7, 2008.

The grantee, his heirs and assigns do hereby covenant and agree that the parcel of land described by this instrument will not be conveyed by said grantee, heirs, or assigns independently from a contiguous parcel of land with road frontage without the approval of the Richland County Regional Planning Commission.

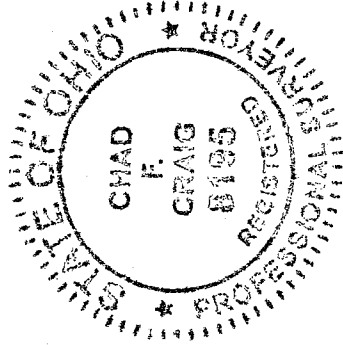
Iron pins set are 5/8" rods with caps stamped "SEILER AND CRAIG INC."

Bearings are based on Survey S-6 on file at the Richland County Tax Map Office and are intended to be used for angular determination only.

NEW SPLIT
RICHLAND COUNTY
TAX MAP OFFICE

MLB
INITIAL

8-13-08
DATE



Chad F. Craig, PS #8195
for Seiler & Craig Surveying, Inc.