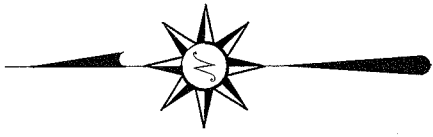


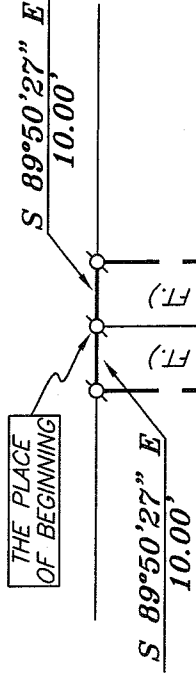


SCALE: 1" = 30'

NORTH

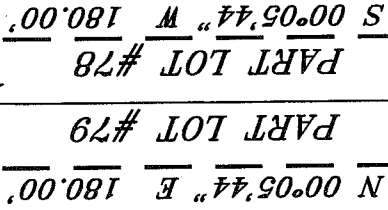


DICKSON AVENUE 20' R/W



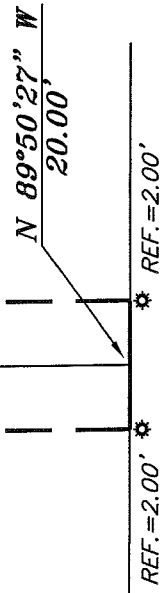
BEARINGS ARE BASED ON AN ASSUMED MERIDIAN AND ARE INTENDED TO BE USED FOR ANGULAR DETERMINATION ONLY.

SURVEY FOR TRANSFER 3600 SQ. FT. TOTAL

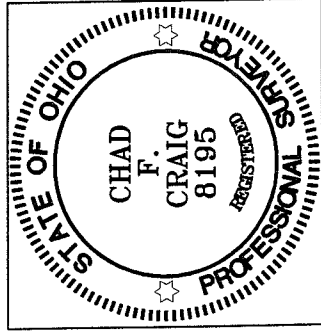


PART LOT #79

PART LOT #78



WEST THIRD STREET 60' R/W



NEW SURVEY OF EXISTING PARCEL RICHLAND COUNTY TAX MAP OFFICE

INITIAL MLC DATE 6-25-08

LEGEND

- DRILL HOLE IN CONCRETE SET
- 2" MAG NAIL SPIKE SET
- RAILROAD SPIKE FOUND
- 5/8" IRON PIN SET WITH CAP STAMPED "SEILER AND CRAIG, INC."

Chad F. Craig

SURVEY BY: CHAD F. CRAIG P.S. #8195
for SEILER & CRAIG SURVEYING INC.
52-1/2 NORTH MAIN STREET
MANSFIELD, OHIO 44902
(419) 525-3644
FAX (419) 525-3696

SURVEY PLAT FOR
PROPERTY TRANSFER

PART LOT #78 AND PART LOT #79
CITY OF MANSFIELD
RICHLAND COUNTY, OHIO

DATE: JUNE 23, 2008

SCALE: 1"=30'

PRINTER:DMG

7-253

SEILER & CRAIG SURVEYING, INC.

Douglas C. Seiler, PS & Chad F. Craig, PS
52 1/2 North Main Street
Mansfield, Ohio 44902
419-525-3644 Fax 419-525-3696
www.seilerandcraig.com

SURVEY DESCRIPTION

PART OF LOT # 78 AND
PART OF LOT 79
CITY OF MANSFIELD, OHIO

Situated in the City of Mansfield, County of Richland, State of Ohio and being known as a part of Lot #78 and a part of Lot #79 of the consecutively numbered lots in said city, and being more particularly described as follows:

Beginning for the same at 2" Mag Nail spike set on the northwest corner of Lot #78 in said city; Thence, South 89 degrees 50 minutes 27 seconds East with the north line of said lot, a distance of 10.00 feet to a 2" Mag Nail spike set;

Thence, South 00 degrees 05 minutes 44 seconds West a distance of 180.00 feet to a point on the south line of said lot, said point being referenced by a drill hole set in concrete on a bearing of South 00 degrees 05 minutes 44 seconds West and at a distance of 2.00 feet;

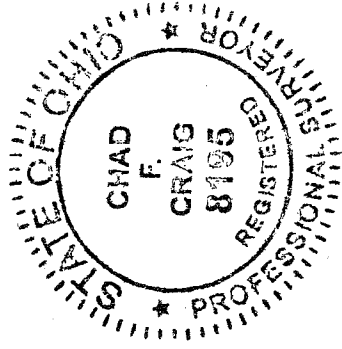
Thence, North 89 degrees 50 minutes 27 seconds West with said south line and the westerly prolongation thereof, a distance of 20.00 feet to a point on the south line of Lot #79, said point being referenced by a drill hole set in concrete on a bearing of South 00 degrees 05 minutes 44 seconds West and at a distance of 2.00 feet;

Thence, North 00 degrees 05 minutes 44 seconds East a distance of 180.00 feet to a 2" Mag Nail spike set on the north line of said lot;

Thence, South 89 degrees 50 minutes 27 seconds East with said north line a distance of 10.00 feet to the place of beginning, containing a total of 3600 square feet of which 1800 square feet are located within Lot #78 and 1800 square feet are located within Lot #79 according to survey by Chad F. Craig P.S. #8195 for Seiler and Craig Surveying, Inc. on June 23, 2008.

Iron pins set are 5/8" rods with caps stamped "SEILER AND CRAIG, INC".

Bearings are based on an assumed meridian and are intended to be used for angular determination only.



Chad F. Craig

Chad F. Craig P.S. #8195
for Seiler and Craig Surveying, Inc.

NEW SURVEY
OF EXISTING PARCEL
RICHLAND COUNTY
TAX MAP OFFICE

MIB 6-25-08
INITIAL DATE

2253