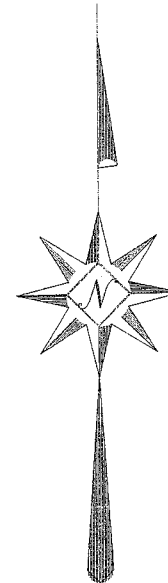
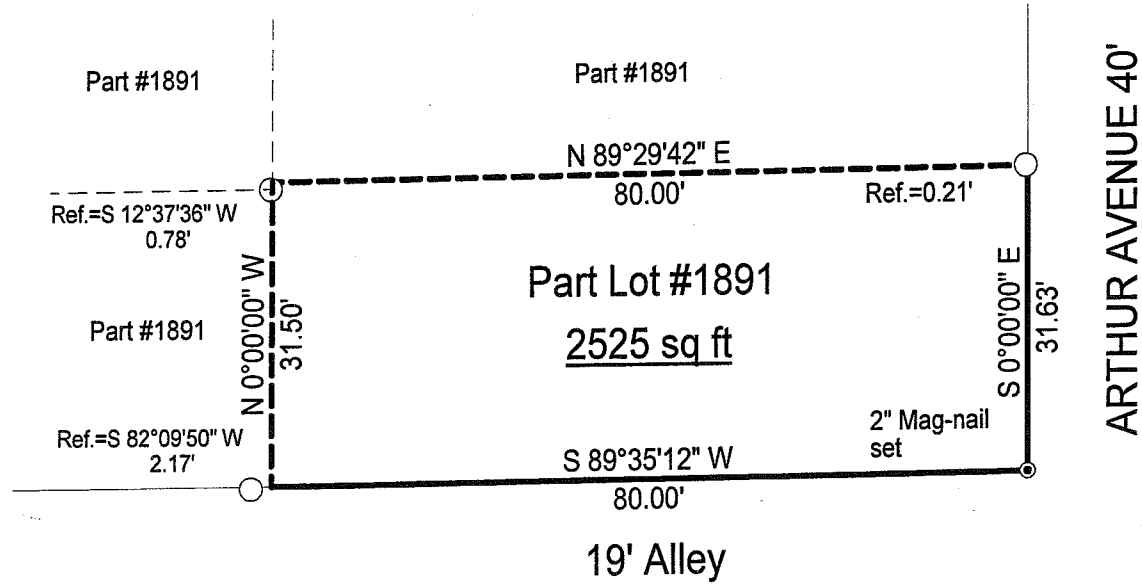


SURVEY PLAT

Part Lot #1891
City of Mansfield
Richland County, Ohio

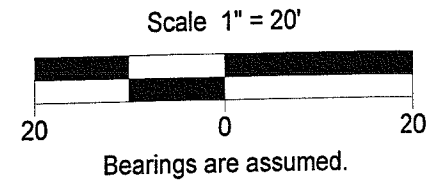


LEGEND

○ Iron pin found



NEW SURVEY
OF EXISTING PARCEL
RICHLAND COUNTY
TAX MAP OFFICE
MIB 5-28-08
INITIAL DATE



Warne R. Clancy
Warne R. Clancy P.S. #7178

DATE: 5/27/08

JOB NO.: W052208

7-212

SURVEY DESCRIPTION
Part Lot #1891 – City of Mansfield
Richland County, Ohio

Situated in the City of Mansfield, County of Richland, State of Ohio, and being a part of Lot #1891 of the consecutively numbered lots of said City, more particularly described as follows:

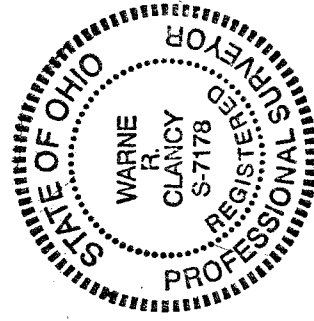
Beginning for the same at a 2" Mag-nail set marking the southeast corner of said Lot #1891, the same being the intersection of the west right-of-way line of Arthur Avenue (40') with the north right-of-way line of a 19 foot wide alley; Thence, South 89 degrees 35 minutes 12 seconds West with said north right-of-way line, a distance of 80.00 feet to a point thereon, referenced by an iron pin found South 82 degrees 09 minutes 50 seconds West, a distance of 2.17 feet;

Thence, North 00 degrees 00 minutes 00 seconds West, a distance of 31.50 feet to a point, referenced by an iron pin found South 12 degrees 37 minutes 36 seconds West, a distance of 0.78 feet;

Thence, North 89 degrees 29 minutes 42 seconds East, passing an iron pin found for reference at 79.79 feet, a distance of 80.00 feet to a point on the said west Arthur Avenue right-of-way line;

Thence, South 00 degrees 00 minutes 00 seconds East with said right-of-way line, a distance of 31.63 feet to the Place of Beginning, containing 2,525 square feet, according to survey by Warne R. Clancy, Professional Surveyor #7178 on May 22, 2008.

Bearings are assumed.



NEW SURVEY
OF EXISTING PARCEL
RICHLAND COUNTY
TAX MAP OFFICE

WARNE R. CLANCY
INITIAL
5-28-08
DATE

Warne R. Clancy
Warne R. Clancy
P.S. 7178

7-212