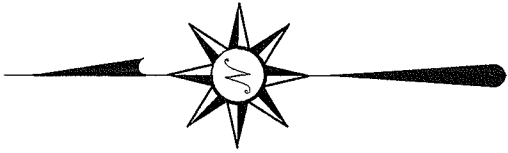


AND



Bearings are based on an assumed meridian and are intended to be used for angular determination only.

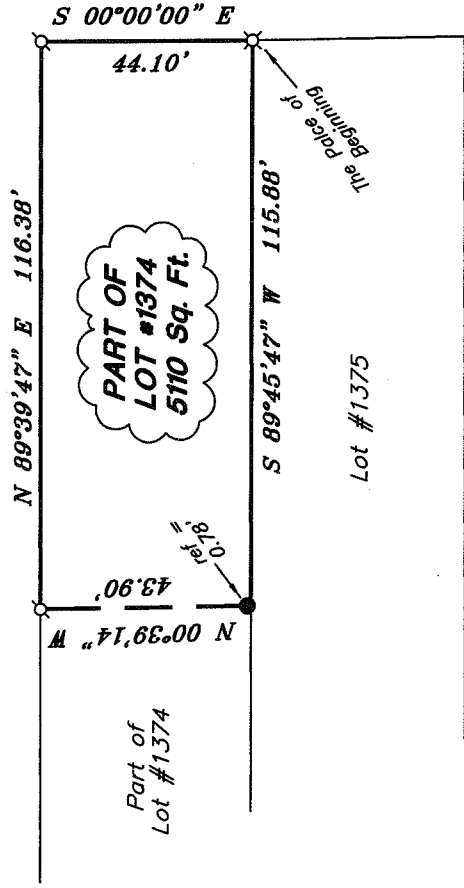
LEGEND

- iron pin found
- ⊗ 5/8" iron pin set with cap stamped "SEILER AND CRAIG, INC."
- ⊕ 2" Mag Nail spike set



Scale: 1" = 40'

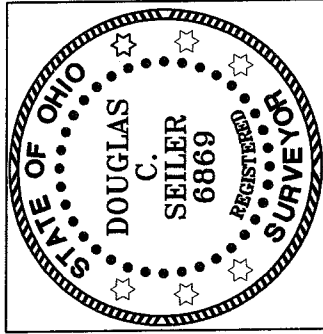
PUBLIC ALLEY



PART OF LOT #1374
5110 Sq. Ft.

HIGH STREET

PUBLIC ALLEY



NEW SURVEY
OF EXISTING PARCEL
RIGHLAND COUNTY
TAX MAP, OFFICE

MSB 5-10-08
INITIAL DATE

Douglas C. Seiler
DOUGLAS C. SEILER PS #6869
FOR SEILER & CRAIG SURVEYING INC.
52-1/2 NORTH MAIN STREET
MANSFIELD, OHIO 44902
(419) 525-3644
FAX (419) 525-3696

SURVEY PLAT FOR
DANIEL SHUPE
PART OF LOT #1374
CITY OF MANSFIELD
OHIO
Date: May 14, 2008
Scale: 1" = 40'

353high.dwg/353high2.asc

7-200

SEILER & CRAIG SURVEYING, INC.

Douglas C. Seiler, PS & Chad F. Craig, PS

52 1/2 North Main Street

Mansfield, Ohio 44902

419-525-3644 Fax 419-525-3696

www.seilerandcraig.com

SURVEY DESCRIPTION

PART OF LOT #1374
CITY OF MANSFIELD, OHIO

Situated in the City of Mansfield, County of Richland, State of Ohio and being a part of Lot #1374 of the consecutively numbered lots in said city, and being more particularly described as follows:

Beginning for the same at an iron pin set marking the southeast corner of said lot; Thence, South 89 degrees 45 minutes 47 seconds West with the south line of said lot, a distance of 115.88 feet to an existing property corner as referenced by an iron pin found on a bearing of North 00 degrees 39 minutes 14 seconds West and at a distance of 0.78 of a foot from said corner;

Thence, North 00 degrees 39 minutes 14 seconds West, passing through the aforementioned iron pin at 0.78 of a foot, a total distance of 43.90 feet to a Mag Nail spike set on the north line of said lot;

Thence, North 89 degrees 39 minutes 47 seconds East with said north line, a distance of 116.38 feet to a Mag Nail spike set marking the northeast corner thereof;

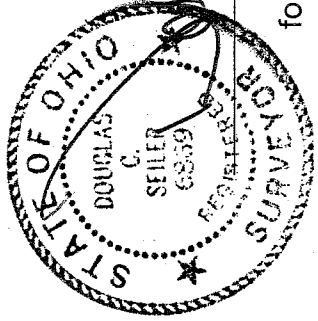
Thence, South 00 degrees 00 minutes 00 seconds East with the east line of said lot, a distance of 44.10 feet to the place of beginning, containing 5110 square feet, according to survey by Douglas C. Seiler, Professional Surveyor #6869, on May 14, 2008.

Iron pins set are 5/8" rods with caps stamped "SEILER AND CRAIG INC."

Bearings are based on an assumed meridian and are intended to be used for angular determination only.

NEW SURVEY
OF EXISTING PARCEL
RICHLAND COUNTY
TAX MAP, OFFICE

MLB 5-19-08
INITIAL DATE



Douglas C. Seiler
Douglas C. Seiler PS #6869
for Seiler & Craig Surveying, Inc.

7-200