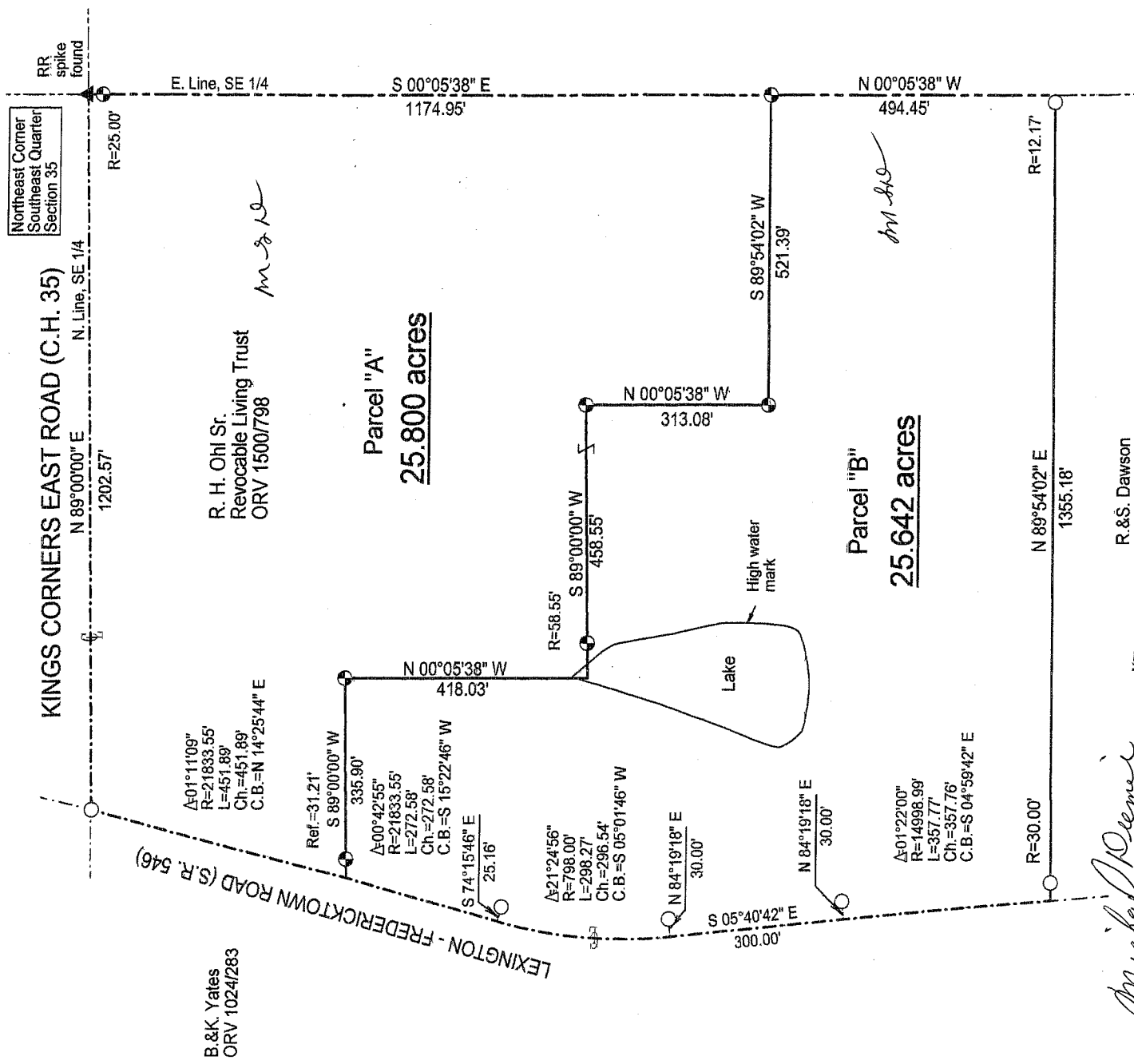
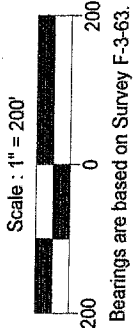


SURVEY PLAT

Part Southeast Quarter - Section 35
Troy Township, T-20, R-19
Richland County, Ohio



Northeast Corner
Southeast Quarter
Section 35

KINGS CORNERS EAST ROAD (C.H. 35)

RR spike found

B.&K. Yates
ORV 1024283

R. H. Ohi Sr.
Revocable Living Trust
ORV 1500798

Parcel "A"
25.800 acres

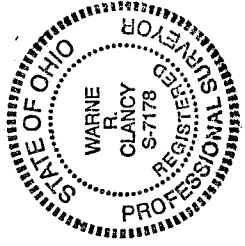
Parcel "B"
25.642 acres

Michael Demmi
Troy Zornick
5-7-08

R.&S. Dawson
ORV 1581753

NEW SPLIT
RICHLAND COUNTY
TAX MAP OFFICE

NEW SURVEY
OF EXISTING PARCEL
RICHLAND COUNTY
TAX MAP OFFICE



LEGEND

- Iron pin set with cap stamped "CLANCY 7178"
- Iron pin found

NEW SURVEY INITIAL: MRB DATE: 5-14-08

OF EXISTING PARCEL INITIAL: MRB DATE: 5-14-08

DATE: 5/3/05

JOB NO.: W032805

Warnie R. Clancy
Warnie R. Clancy
P.S. #7178

7-185

SURVEY DESCRIPTION

Part Southeast Quarter – Section 35
Troy Township, T-20, R-19
Richland County, Ohio

Situated in the Township of Troy, County of Richland, State of Ohio, and being a part of the Southeast Quarter of Section 35 of Township 20 of Range 19, more particularly described as follows:

Beginning for same at a Railroad spike found marking the northeast corner of said quarter; Thence, South 00 degrees 05 minutes 38 seconds East with the east line of said quarter, passing an iron pin set for reference at 25.00 feet, a distance of 1174.95 feet to an iron pin set thereon;

Thence, South 89 degrees 54 minutes 02 seconds West, a distance of 521.39 feet to an iron pin set;

Thence, North 00 degrees 05 minutes 38 seconds West, a distance of 313.08 feet to an iron pin set;

Thence, South 89 degrees 00 minutes 00 seconds West, passing an iron pin set for reference at 400.00 feet, a distance of 458.55 feet to a point;

Thence, North 00 degrees 05 minutes 38 seconds West, a distance of 418.03 feet to an iron pin set;

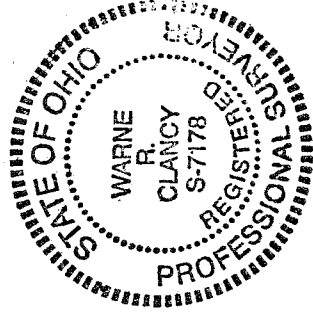
Thence, South 89 degrees 00 minutes 00 seconds West, passing an iron pin set for reference at 304.69 feet, a distance of 335.90 feet to a point on the centerline of the Lexington – Fredericktown Road (S.R. 546);

Thence, northeasterly with said centerline along a curve to the left, defined by a 01 degree 11 minute 09 second central angle, a 21,833.55 foot radius, a 451.89 foot arc, and a 451.89 foot chord bearing North 14 degrees 25 minutes 44 seconds East, to an iron pin found marking its intersection with the north line of said southeast quarter;

Thence, North 89 degrees 00 minutes 00 seconds East with said north line, the same being the centerline of Kings Corners East Road (C.H. 35), a distance of 1202.57 feet to the Place of Beginning, containing 25.800 acres according to survey by Warne R. Clancy, Professional Surveyor #7178, on April 28, 2008.

Iron pins set are #5 rebars with caps stamped "CLANCY 7178".

Bearings are based on Survey F-3-63.



Parcel "A" – 25.800 ac.

Michael Diemei
Troy, Ohio
5-7-2008

NEW SPLIT
RICHLAND COUNTY
TAX MAP OFFICE
MLB 5/14/08
INITIAL DATE

Warne R. Clancy
Warne R. Clancy
P.S. 7178

2-185

*Mrs. Edith Reemer
Troy Zaring
5-7-2008*

SURVEY DESCRIPTION

**Part Southeast Quarter – Section 35
Troy Township, T-20, R-19
Richland County, Ohio**

Situated in the Township of Troy, County of Richland, State of Ohio, and being a part of the Southeast Quarter of Section 35 of Township 20 of Range 19, more particularly described as follows:

Commencing for same at a Railroad spike found marking the northeast corner of said quarter; Thence, South 00 degrees 05 minutes 38 seconds East with the east line of said quarter, passing an iron pin set for reference at 25.00 feet, a distance of 1174.95 feet to an iron pin set thereon, the Place of Beginning;

Thence, South 89 degrees 54 minutes 02 seconds West, a distance of 521.39 feet to an iron pin set;

Thence, North 00 degrees 05 minutes 38 seconds West, a distance of 313.08 feet to an iron pin set;

Thence, South 89 degrees 00 minutes 00 seconds West, passing an iron pin set for reference at 400.00 feet, a distance of 458.55 feet to a point;

Thence, North 00 degrees 05 minutes 38 seconds West, a distance of 418.03 feet to an iron pin set;

Thence, South 89 degrees 00 minutes 00 seconds West, passing an iron pin set for reference at 304.69 feet, a distance of 335.90 feet to a point on the centerline of the Lexington – Fredericktown Road (S.R. 546);

Thence, southwesterly with said centerline along a curve to the right, defined by a 00 degree 42 minute 55 second central angle, a 21,833.55 foot radius, a 272.58 foot arc, and a 272.58 foot chord bearing South 15 degrees 22 minutes 46 seconds West, to a point of reverse curvature thereon, referenced by an iron pin found South 74 degrees 15 minutes 46 seconds East, a distance of 25.16 feet;

Thence, continuing with said centerline southwesterly along a curve to the left, defined by a 21 degree 24 minute 56 second central angle, a 798.00 foot radius, a 298.27 foot arc, and a 296.54 foot chord bearing South 05 degrees 01 minutes 46 seconds West, to its point of tangency thereon, referenced by an iron pin found North 84 degrees 19 minutes 18 seconds East, a distance of 30.00 feet;

Thence, continuing with said centerline South 05 degrees 40 minutes 42 seconds East, a distance of 300.00 feet to a point of curvature thereon, referenced by an iron pin found North 84 degrees 19 minutes 18 seconds East, a distance of 30.00 feet;

Thence, continuing with said centerline southeasterly along a curve to the right, defined by a 01 degree 22 minute 00 central angle, a 14,998.99 foot radius, a 357.77 foot arc, and a 357.76 foot chord bearing South 04 degrees 59 minutes 42 seconds East, to the northwest corner of a parcel owned by R. & S. Dawson (ORV 1581/153);

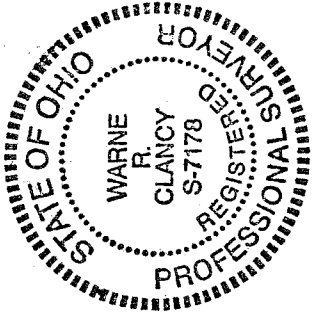
Thence, North 89 degrees 54 minutes 02 seconds East with said north line, passing iron pins found for reference at 30.00 feet, and 1343.01 feet, a distance of 1355.18 feet to a point on the east line of said southeast quarter;

Thence, North 00 degrees 05 minutes 38 seconds West with said east line, a distance of 494.45 feet to the Place of Beginning, containing 25.642 acres according to survey by Warne R. Clancy, Professional Surveyor #7178, on April 28, 2008.

2-185

Iron pins set are #5 rebars with caps stamped "CLANCY 7178".

Bearings are based on Survey F-3-63.



Michael Diemer
Parcel "B" - 25.642 ac. *Froy Zarey Warn R. Clancy* P.S. 7178
5-7-2008
Warne R. Clancy

NEW SURVEY
OF EXISTING PARCEL
RICHLAND COUNTY
TAX MAP OFFICE

MB 5-14-08
INITIAL DATE

2-185