

NOR



BEARINGS ARE BASED ON AN ASSUMED MERIDIAN AND ARE INTENDED TO BE USED FOR ANGULAR DETERMINATION ONLY.

WEST FOURTH STREET

PLAT FOR
VACATION OF
UNNAMED STREET

JAMES GRAHAM
(O.V. 805, PAGE: 88)

PARCEL "C"
0.43 ACRE

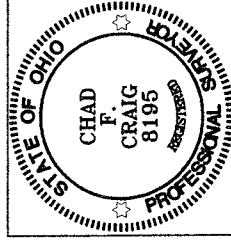
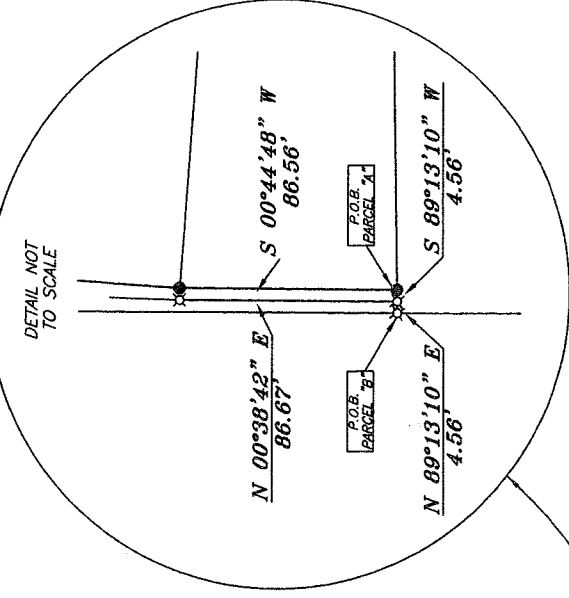
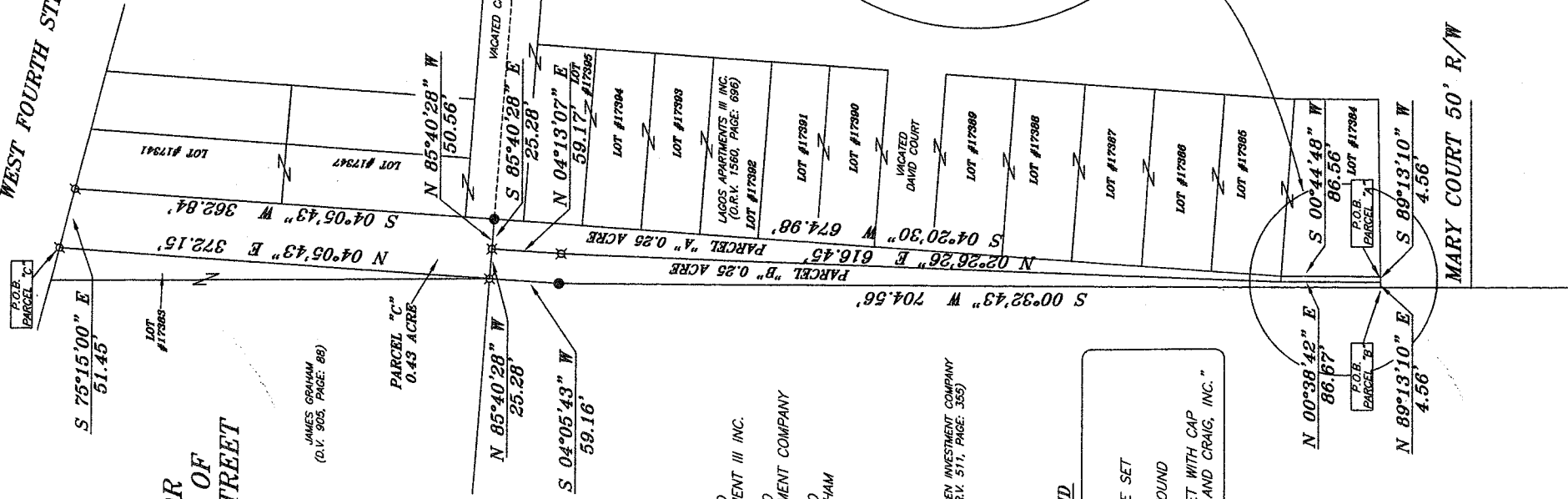
N 85°40'28" W
25.28'
S 04°05'43" W
59.16'

PARCEL "A" TO
LAGOS APARTMENT III INC.
PARCEL "B" TO
ASPEN INVESTMENT COMPANY
PARCEL "C" TO
JAMES F. GRAHAM

ASPEN INVESTMENT COMPANY
(O.V. 511, PAGE: 355)

LEGEND

- IRON PIN FOUND
- ⊕ 2" MAG NAIL SPIKE SET
- ▲ RAILROAD SPIKE FOUND
- ⊗ 5/8" IRON PIN SET WITH CAP STAMPED "SEILER AND CRAIG, INC."



MARY COURT 50' R/W

SURVEY FOR
UNNAMED STREET VACATION
PART NW QTR. SECTION 19, T-21, R-18
CITY OF MANSFIELD
RICHLAND COUNTY, OHIO
DATE: SEPTEMBER 17, 2007 SCALE: 1"=100'
GRAHAM/AC

SURVEY BY:
Chad F. Craig
CHAD F. CRAIG P.S. #8195
for SELLER & CRAIG SURVEYING INC.
52-1/2 NORTH MAIN STREET
MANSFIELD, OHIO 44902
(419) 525-3644
FAX (419) 525-3696

NEW SPLIT
RICHLAND COUNTY
TAX MAP OFFICE
EAV 4-28-08
INITIAL DATE

NEW SURVEY
OF EXISTING PARCEL
RICHLAND COUNTY
TAX MAP OFFICE
EAV 4-22-08
INITIAL DATE

Z-147

SEILER & CRAIG SURVEYING, INC.

Douglas C. Seiler, PS & Chad F. Craig, PS
52 1/2 North Main Street
Mansfield, Ohio 44902
419-525-3644 Fax 419-525-3696
www.seilerandcraig.com

SURVEY DESCRIPTION

PARCEL "A"

PART OF THE NW QUARTER OF SECTION 19
CITY OF MANSFIELD
RICHLAND COUNTY, OHIO

Situated in the City of Mansfield, County of Richland, State of Ohio and being a part of the Northwest Quarter of Section 19, of Township 21 North, Range 18 West, and being more particularly described as follows:

Beginning for the same at an iron pin found and accepted as marking the southwest corner of Lot #17384, the same being the southeast corner of an unnamed street; Thence, South 89 degrees 13 minutes 10 seconds West with the south line of said street, a distance of 4.56 feet to an iron pin set;

Thence, North 00 degrees 38 minutes 42 seconds East a distance of 86.67 feet to an iron pin set;

Thence, North 02 degrees 26 minutes 26 seconds East a distance of 616.45 feet to an iron pin set;

Thence, North 04 degrees 13 minutes 07 seconds East a distance of 59.17 feet to an iron pin set;

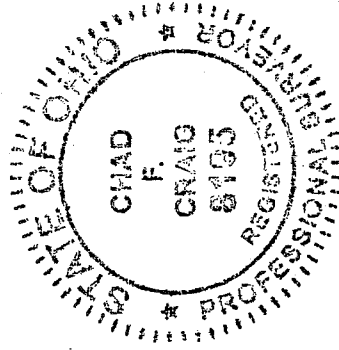
Thence, South 85 degrees 40 minutes 28 seconds East a distance of 25.28 feet to an iron pin found on the east line of said street;

Thence, South 04 degrees 20 minutes 30 seconds West with said east line, a distance of 674.98 feet to an iron found;

Thence, South 00 degrees 44 minutes 48 seconds West with said east line, a distance of 86.56 feet to the place of beginning, containing 0.25 acre according to survey by Chad F. Craig P.S. #8195 for Seiler & Craig Surveying, Inc. on September 17, 2006.

Iron pins set are 5/8" rods with caps stamped "SEILER AND CRAIG INC".

Bearings are based on an assumed meridian and are intended to be used for angular determination only.



Chad F. Craig

Chad F. Craig P.S. #8195
for Seiler & Craig Surveying, Inc.

NEW SPLIT
RICHLAND COUNTY
TAX MAP OFFICE

MC 4208
INITIAL DATE

SEILER & CRAIG SURVEYING, INC.

Douglas C. Seiler, PS & Chad F. Craig, PS
52 1/2 North Main Street
Mansfield, Ohio 44902
419-525-3644 Fax 419-525-3696
www.seilerandcraig.com

SURVEY DESCRIPTION

PARCEL "B"

PART OF THE NW QUARTER OF SECTION 19
CITY OF MANSFIELD
RICHLAND COUNTY, OHIO

Situated in the City of Mansfield, County of Richland, State of Ohio and being a part of the Northwest Quarter of Section 19, of Township 21 North, Range 18 West, and being more particularly described as follows:

Beginning for the same at an iron pin set marking the southwest corner of an unnamed street, the same being the northwest corner of Mary Court (50' R/W); Thence, North 89 degrees 13 minutes 10 seconds East with the south line of said street, a distance of 4.56 feet to an iron pin set;

Thence, North 00 degrees 38 minutes 42 seconds East a distance of 86.67 feet to an iron pin set;

Thence, North 02 degrees 26 minutes 26 seconds East a distance of 616.45 feet to an iron pin set;

Thence, North 04 degrees 13 minutes 07 seconds East a distance of 59.17 feet to an iron pin set;

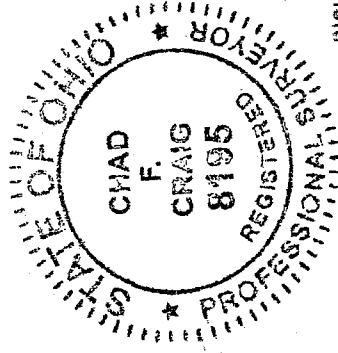
Thence, North 85 degrees 40 minutes 28 seconds West a distance of 25.28 feet to an iron pin set on the west line of said street;

Thence, South 04 degrees 05 minutes 43 seconds West with said west line, a distance of 59.16 feet to an iron pin found;

Thence, South 00 degrees 32 minutes 43 seconds West with said west line, a distance of 704.56 feet to the place of beginning, containing 0.25 acre according to survey by Chad F. Craig P.S. #8195 for Seiler & Craig Surveying, Inc. on September 17, 2006.

Iron pins set are 5/8" rods with caps stamped "SEILER AND CRAIG INC".

Bearings are based on an assumed meridian and are intended to be used for angular determination only.



Chad F. Craig

Chad F. Craig P.S.#8195
for Seiler & Craig Surveying, Inc.

NEW SPLIT
RICHLAND COUNTY
TAX MAP OFFICE

MIC 4226
INITIAL DATE

2-147 Z-147

SEILER & CRAIG SURVEYING, INC.

Douglas C. Seiler, PS & Chad F. Craig, PS
52 1/2 North Main Street
Mansfield, Ohio 44902
419-525-3644 Fax 419-525-3696
www.seilerandcraig.com

SURVEY DESCRIPTION

PARCEL "C"

PART OF THE NW QUARTER OF SECTION 19
CITY OF MANSFIELD
RICHLAND COUNTY, OHIO

Situated in the City of Mansfield, County of Richland, State of Ohio and being a part of the Northwest Quarter of Section 19, of Township 21 North, Range 18 West, and being more particularly described as follows:

Beginning for the same at 2" Mag Nail spike set marking the northeast corner of lot #17383, the same being the northwest corner of an unnamed street and a point on the south right of way of West Fourth Street; Thence, South 75 degrees 15 minutes 00 seconds East with the north line of said street and the south right of way of West Fourth Street, a distance of 51.45 feet to an 2" Mag Nail spike set on the northeast corner of said street;

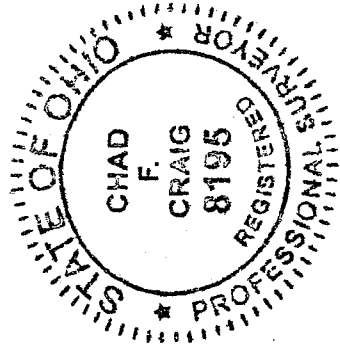
Thence, South 04 degrees 05 minutes 43 seconds West with the east line of said street, a distance of 362.84 feet to an iron pin found;

Thence, North 85 degrees 40 minutes 28 seconds West passing through an iron pin set at 25.28 feet, a total distance of 50.56 feet to an iron pin set on the west line of said street;

Thence, North 04 degrees 05 minutes 43 seconds East with said west line, a distance of 372.15 feet to the place of beginning, containing 0.43 acre according to survey by Chad F. Craig P.S. #8195 for Seiler & Craig Surveying, Inc. on September 17, 2006.

Iron pins set are 5/8" rods with caps stamped "SEILER AND CRAIG INC".

Bearings are based on an assumed meridian and are intended to be used for angular determination only.



Chad F. Craig
Chad F. Craig P.S. #8195
for Seiler & Craig Surveying, Inc.

NEW SURVEY
OF EXISTING PARCEL
RICHLAND COUNTY
TAX MAP OFFICE

MLB / *4/20/08*
INITIAL / DATE