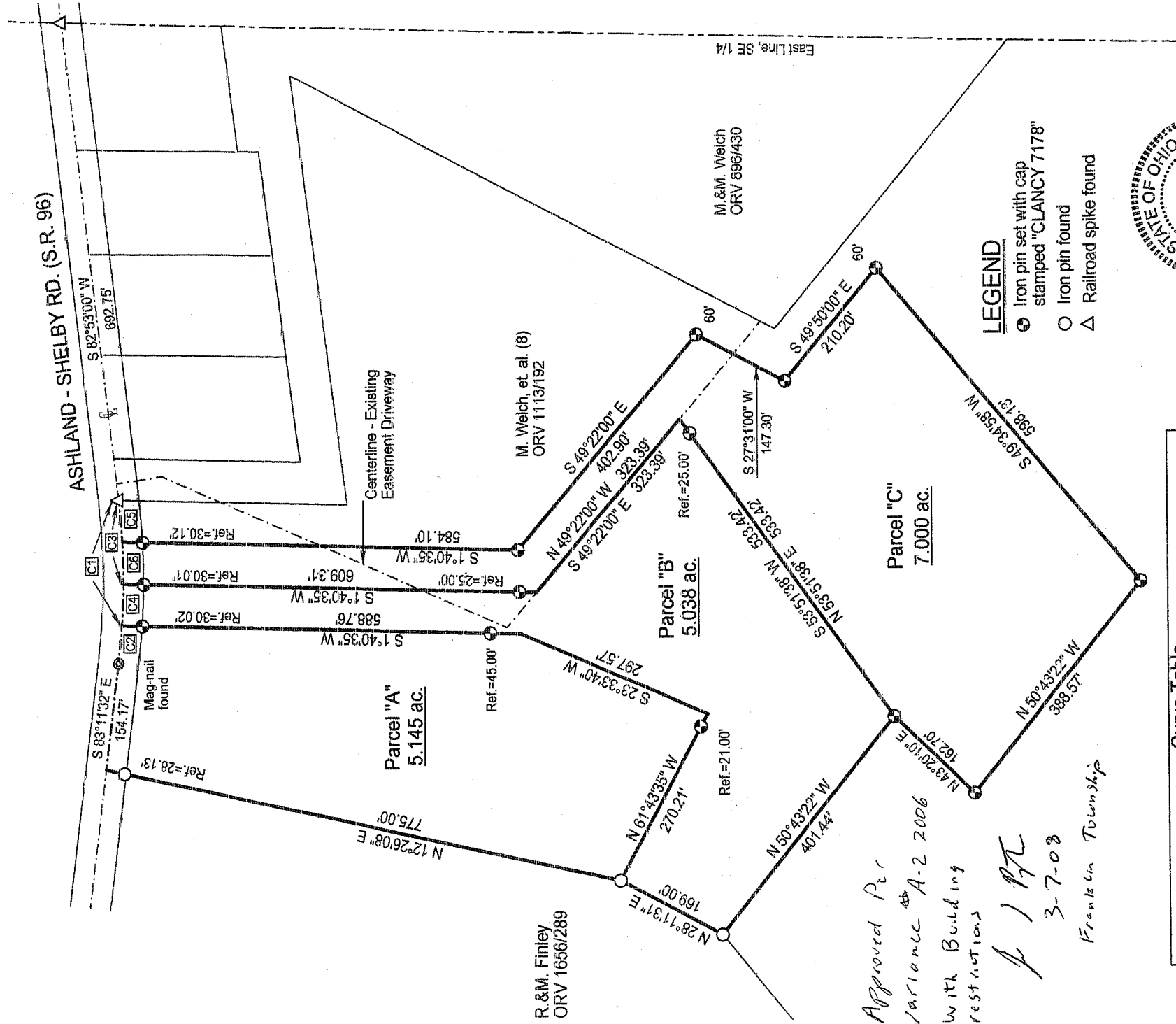
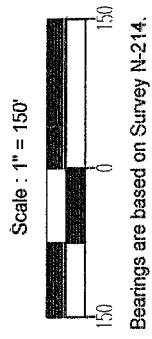
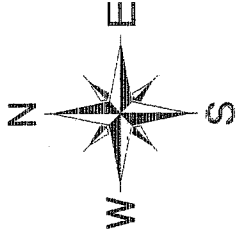


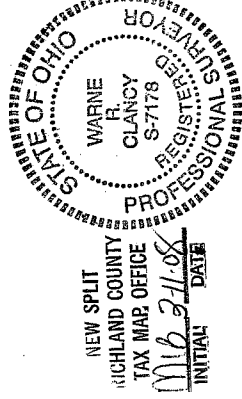
SURVEY PLAT

Part Southeast 1/4 - Section 3
Franklin Township, T-22, R-18
Richland County, Ohio



LEGEND

- Iron pin set with cap stamped "CLANCY 7178"
- Iron pin found
- △ Railroad spike found



Curve Table					
Id	Delta	Radius	Arc Length	Chord	Ch Bear
C1	11°00'08"	940.36'	180.57'	180.30'	S 88°23'04" W
C2	3°19'00"	940.36'	54.43'	54.43'	S 84°27'22" E
C3	7°20'45"	940.36'	120.56'	120.48'	S 86°33'23" W
C4	3°39'23"	940.36'	60.01'	60.00'	S 87°56'33" E
C5	3°39'45"	940.36'	60.45'	60.44'	S 84°43'30" W
C6	3°41'01"	940.36'	60.11'	60.10'	N 88°23'53" E

Approved Per
Variance A-2 2006
with Building
Restrictions

A J R
3-7-08
Franklin Township

DATE: 2/13/08

JOB NO.: W011906S

W. R. Clancy
Wame R. Clancy
P.S. #7178

SURVEY DESCRIPTION

Part Southeast Quarter – Section 3
Franklin Township, T-22, R-18
Richland County, Ohio

Situated in the Township of Franklin, County of Richland, State of Ohio, and being a part of the Southeast Quarter of Section 3 of Township 22 of Range 18, more particularly described as follows:

Commencing for the same at a Railroad spike found marking the intersection of the east line of said southeast quarter with the centerline of the Ashland – Shelby Road (S.R. 96); Thence, South 82 degrees 53 minutes 00 seconds West with said centerline, a distance of 692.75 feet to a Railroad spike found marking the northwest corner of a parcel owned by M. & M. Welch (ORV 896/430); Thence, continuing southwesterly with said centerline along a curve to the right, defined by an 11 degree 00 minute 08 second central angle, a 940.36 foot radius, an 180.57 foot arc, and a 180.30 foot chord bearing South 88 degrees 23 minutes 04 seconds West, to a point thereon, the Place of Beginning;

Thence, South 01 degrees 40 minutes 35 seconds West, passing iron pins set for reference at 30.02 feet and 543.76 feet a distance of 588.76 feet to a point;

Thence, South 23 degrees 33 minutes 40 seconds West, a distance of 297.57 feet to a point;

Thence, North 61 degrees 43 minutes 35 seconds West, passing an iron pin set for reference at 21.00 feet, a distance of 270.21 feet to an iron pin found on the east line of a parcel owned by R. & M. Finley (ORV 1656/289);

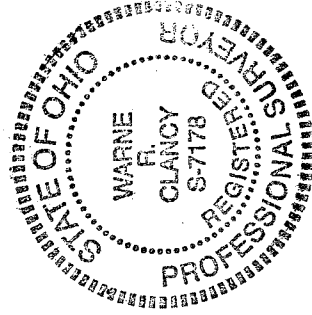
Thence, North 12 degrees 26 minutes 08 seconds East with said east line, passing an iron pin found for reference at 746.87 feet, a distance of 775.00 feet to a point on the said S.R. 96 centerline;

Thence, South 83 degrees 11 minutes 32 seconds East with said centerline, a distance of 154.17 feet to a Mag-nail found marking a point of curvature thereon;

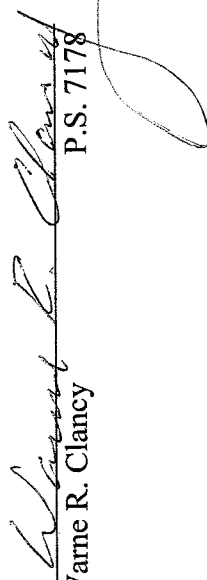
Thence, continuing southeasterly with said centerline along a curve to the left, defined by a 3 degree 19 minute 00 second central angle, a 940.36 foot radius, a 54.43 foot arc, and a 54.43 foot chord bearing South 84 degrees 27 minutes 22 seconds East, to the Place of Beginning, containing 5.145 acres according to survey by Warne R. Clancy, Professional Surveyor #7178, on January 19, 2006.

Iron pins set are #5 rebars with caps stamped "CLANCY 7178".

Bearings are based on Survey N-214.



Parcel "A" – 5.145 ac.


Warne R. Clancy
P.S. 7178

NEW SPLIT
RICHLAND COUNTY
TAX MAP OFFICE
INITIAL MLC DATE 3-11-08

SURVEY DESCRIPTION

**Part Southeast Quarter – Section 3
Franklin Township, T-22, R-18
Richland County, Ohio**

Situated in the Township of Franklin, County of Richland, State of Ohio, and being a part of the Southeast Quarter of Section 3 of Township 22 of Range 18, more particularly described as follows:

Commencing for the same at a Railroad spike found marking the intersection of the east line of said southeast quarter with the centerline of the Ashland – Shelby Road (S.R. 96); Thence, South 82 degrees 53 minutes 00 seconds West with said centerline, a distance of 692.75 feet to a Railroad spike found marking the northwest corner of a parcel owned by M. & M. Welch (ORV 896/430); Thence, continuing southwesterly with said centerline along a curve to the right, defined by an 07 degree 20 minute 45 second central angle, a 940.36 foot radius, an 120.56 foot arc, and a 120.48 foot chord bearing South 86 degrees 33 minutes 23 seconds West, to a point thereon, the Place of Beginning;

Thence, South 01 degrees 40 minutes 35 seconds West, passing iron pins set for reference at 30.01 feet and 584.31, a distance of 609.31 feet to a point;

Thence, South 49 degrees 22 minutes 00 seconds East, a distance of 323.39 feet to a point;

Thence, South 53 degrees 51 minutes 38 seconds West, passing an iron pin set for reference at 25.00 feet, a distance of 533.42 feet to an iron pin set;

Thence, North 50 degrees 43 minutes 22 seconds West, a distance of 401.44 feet to an iron pin found on the east line of a parcel owned by R. & M. Finley (ORV 1656/289);

Thence, North 28 degrees 11 minutes 31 seconds East with said east line, a distance of 169.00 feet to an iron pin found thereon;

Thence, South 61 degrees 43 minutes 35 seconds East, passing an iron pin set for reference at 249.21 feet, a distance of 270.21 feet to a point;

Thence, North 23 degrees 33 minutes 40 seconds East, a distance of 297.57 feet to a point;

Thence, North 01 degrees 40 minutes 35 seconds East, passing iron pins set for reference at 45.00 feet and 558.74 feet, a distance of 588.76 feet to a point on the said S.R. 96 centerline;

Thence, southeasterly with said centerline along a curve to the left, defined by a 3 degree 39 minute 23 second central angle, a 940.36 foot radius, a 60.01 foot arc, and a 60.00 foot chord bearing South 87 degrees 56 minutes 33 seconds East, to the Place of Beginning, containing 5.038 acres according to survey by Warne R. Clancy, Professional Surveyor #7178, on January 19, 2006.

Iron pins set are #5 rebars with caps stamped "CLANCY 7178".

Bearings are based on Survey N-214.

Parcel "B" – 5.038 ac.

NEW SPLIT
RICHLAND COUNTY,
TAX MAP OFFICE
MWB 3/1/08
INITIAL DATE



Warne R. Clancy
Warne R. Clancy
P.S. 7178

SURVEY DESCRIPTION

**Part Southeast Quarter – Section 3
Franklin Township, T-22, R-18
Richland County, Ohio**

Situated in the Township of Franklin, County of Richland, State of Ohio, and being a part of the Southeast Quarter of Section 3 of Township 22 of Range 18, more particularly described as follows:

Commencing for the same at a Railroad spike found marking the intersection of the east line of said southeast quarter with the centerline of the Ashland – Shelby Road (S.R. 96); Thence, South 82 degrees 53 minutes 00 seconds West with said centerline, a distance of 692.75 feet to a Railroad spike found marking the northwest corner of a parcel owned by M. & M. Welch (ORV 896/430); Thence, continuing southwesterly with said centerline along a curve to the right, defined by an 03 degree 39 minute 45 second central angle, a 940.36 foot radius, an 60.45 foot arc, and a 60.44 foot chord bearing South 84 degrees 43 minutes 30 seconds West, to a point thereon, the Place of Beginning;

Thence, South 01 degrees 40 minutes 35 seconds West, passing an iron pin set for reference at 30.12 feet, a distance of 584.10 feet to an iron pin set;

Thence, South 49 degrees 22 minutes 00 seconds East, a distance of 402.90 feet to an iron pin set;

Thence, South 27 degrees 31 minutes 00 seconds West, a distance of 147.30 feet to an iron pin set;

Thence, South 49 degrees 50 minutes 00 seconds East, a distance of 210.20 feet to an iron pin set;

Thence, South 49 degrees 34 minutes 58 seconds West, a distance of 598.13 feet to an iron pin set;

Thence, North 50 degrees 43 minutes 22 seconds West, a distance of 388.57 feet to an iron pin set;

Thence, North 43 degrees 20 minutes 10 seconds East, a distance of 162.70 feet to an iron pin set;

Thence, North 53 degrees 51 minutes 38 seconds East, passing an iron pin set for reference at 508.42 feet, a distance of 533.42 feet to a point;

Thence, North 49 degrees 22 minutes 00 seconds West, a distance of 323.39 feet to a point;

Thence, North 01 degrees 40 minutes 35 seconds East, passing iron pins set for reference at 25.00 feet and 579.30 feet, a distance of 609.31 feet to a point on the said S.R. 96 centerline;

Thence, northeasterly with said centerline along a curve to the left, defined by a 3 degree 41 minute 01 second central angle, a 940.36 foot radius, a 60.11 foot arc, and a 60.10 foot chord bearing North 88 degrees 23 minutes 53 seconds East, to the Place of Beginning, containing 7.000 acres according to survey by Warne R. Clancy, Professional Surveyor #7178, on January 19, 2006.

Iron pins set are #5 rebars with caps stamped "CLANCY 7178".
Bearings are based on Survey N-214.

Parcel "C" – 7.000 ac.

NEW SPLIT
RICHLAND COUNTY
TAX MAP OFFICE

MLB 3-11-08
INITIAL DATE



Warne R. Clancy
Warne R. Clancy
P.S. 7178