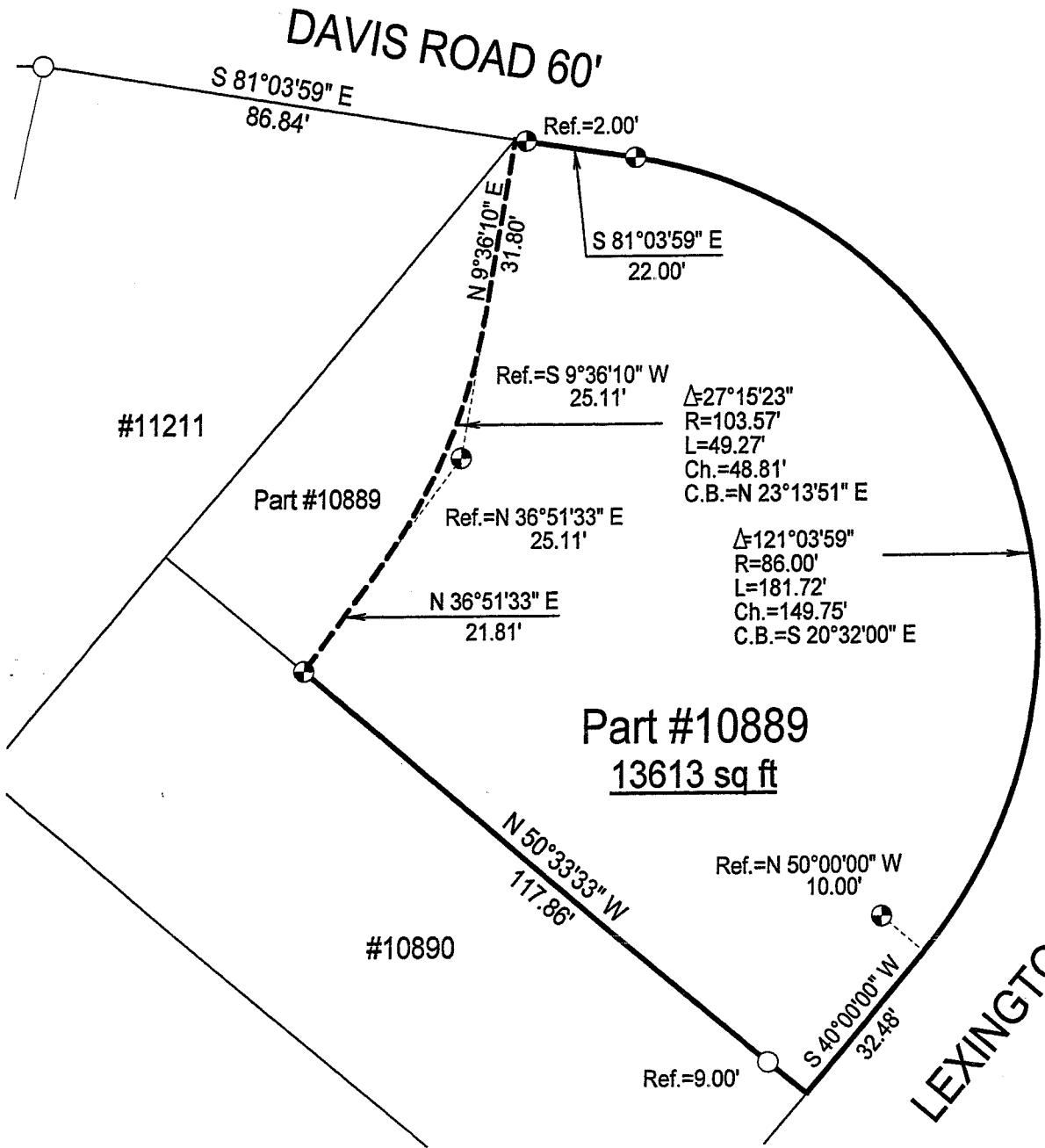


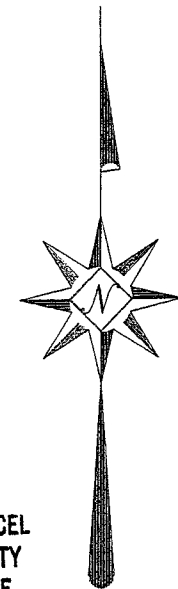
SURVEY PLAT

Part Lot # 10889 - City of Mansfield
Richland County, Ohio



LEGEND

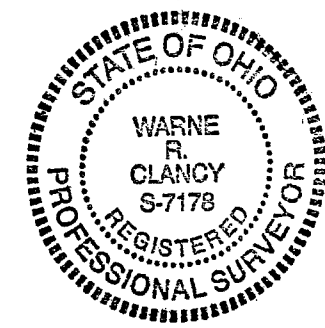
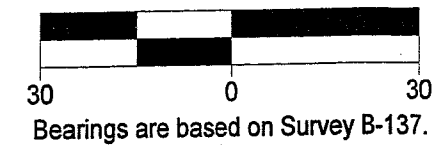
- Iron pin set with cap stamped "CLANCY 7178"
- Iron pin found



NEW SURVEY
OF EXISTING PARCEL
RICHLAND COUNTY
TAX MAP OFFICE

mb *12-20-07*
INITIAL DATE

Scale: 1" = 30'



Warne R. Clancy
Warne R. Clancy P.S. #7178

DATE: 12/19/07
JOB NO.: W121207

SURVEY DESCRIPTION

**Part Lot #10889 – City of Mansfield
Richland County, Ohio**

Situated in the City of Mansfield, County of Richland, State of Ohio, a being a part of Lot #10889 of the consecutively numbered lots of said City, more particularly described as follows:

Beginning for the same at the northwest corner of said Lot #10889, the same being a point on the south right-of-way line of Davis Road (60'); Thence, South 81 degrees 03 minutes 59 seconds East with said right-of-way line, passing an iron pin set for reference at 2.00 feet, a distance of 22.00 feet to an iron pin set marking a point of curvature thereon;

Thence, continuing with said right-of-way line southeasterly along a curve to the right, defined by an 121 degrees 03 minute 59 second central angle, an 86.00 foot radius, an 181.72 foot arc, and an 149.75 foot chord bearing South 20 degrees 32 minutes 00 seconds East, to a point on the north right-of-way line of Lexington Avenue (60'), referenced by an iron pin set North 50 degrees 00 minutes 00 seconds West, a distance of 10.00 feet;

Thence, South 40 degrees 00 minutes 00 seconds West with said right-of-way line, a distance of 32.48 feet to the southeast corner of said lot;

Thence, North 50 degrees 33 minutes 33 seconds West with the south line of said lot, passing an iron pin found for reference at 9.00 feet, a distance of 117.86 feet to an iron pin set thereon;

Thence, North 36 degrees 51 minutes 33 seconds East, a distance of 21.81 feet to a point of curvature, referenced by an iron pin set North 36 degrees 51 minutes 33 seconds East, a distance of 25.11 feet;

Thence, northeasterly along a curve to the left, defined by a 27 degree 15 minute 23 second central angle, an 103.57 foot radius, a 49.27 foot arc, and a 48.81 foot chord bearing North 23 degrees 13 minutes 51 seconds East, to its point of tangency, referenced by an iron pin set South 09 degrees 36 minutes 10 seconds West, a distance of 25.11 feet;

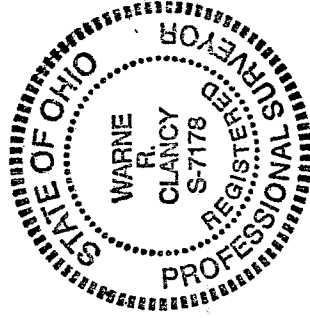
Thence, North 09 degrees 36 minutes 10 seconds East, a distance of 31.80 feet to the Place of Beginning, containing 13,613 square feet according to survey by Warne R. Clancy, Professional Surveyor #7178, on December 12, 2007.

Iron pins set are #5 rebars with caps stamped "CLANCY 7178".

Bearings are based on Survey B-137

NEW SURVEY
OF EXISTING PARCEL
RICHLAND COUNTY
TAX MAP OFFICE

MLB 12-20-07
INITIAL DATE



Warne R. Clancy
Warne R. Clancy
P.S. 7178