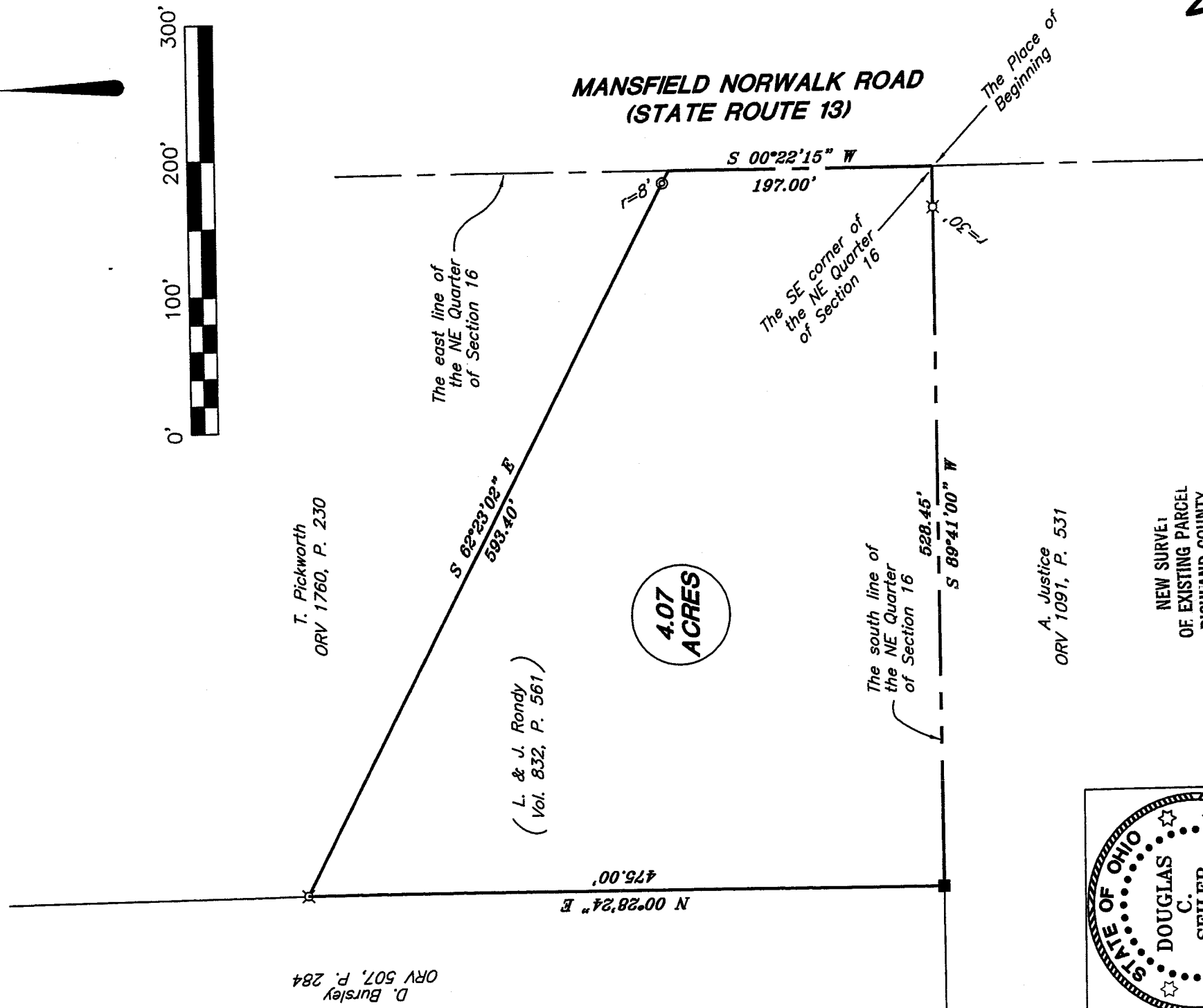
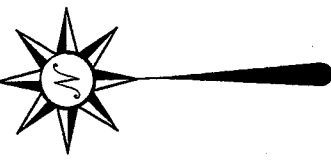


2007

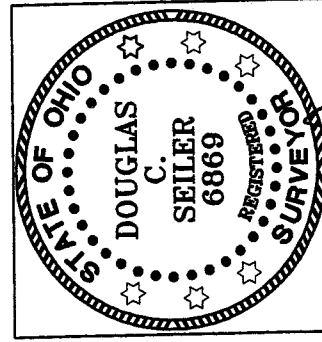
LEGEND

- wooden corner fence post, found
- ⊙ drill hole in bridge deck, set
- ⊗ 5/8" iron pin set with cap stamped "Seiler and Craig, Inc."

Bearings are based on an assumed meridian and are intended to be used for angular determination only.



A. Justice
ORV 1091, P. 531



NEW SURVEY OF EXISTING PARCEL
 RICHLAND COUNTY
 TAX MAP OFFICE

INITIAL: **MS** DATE: **12-4-07**

Douglas C. Seiler

SURVEY BY: DOUGLAS C. SEILER PS. #6869
 FOR SEILER & CRAIG SURVEYING INC.
 52-173 NORTH MAIN STREET
 MANSFIELD, OHIO 44902
 (419) 525-3644
 FAX (419) 525-3696

2-39

SURVEY PLAT
RONDY / LIEBHART
PART NE QTR. SEC. 16, T-22, R-18
FRANKLIN TOWNSHIP
RICHLAND COUNTY, OHIO
Date: December 4, 2007 Scale: 1" = 100'
4059sr13.asc/.dwg

2-39

SEILER & CRAIG SURVEYING, INC.

Douglas C. Seiler, PS & Chad F. Craig, PS
52 1/2 North Main Street
Mansfield, Ohio 44902
419-525-3644 Fax 419-525-3696
www.seilerandcraig.com

SURVEY DESCRIPTION

PART NE QUARTER SECTION 16
FRANKLIN TOWNSHIP
RICHLAND COUNTY, OHIO

Situated in the Township of Franklin, County of Richland, State of Ohio and being a part of the Northeast Quarter of Section 16, of Township 22 North, Range 18 West, and being more particularly described as follows:

Beginning for the same at the southeast corner of said quarter, as referenced by an iron pin set on a bearing of South 89 degrees 41 minutes 00 seconds West and at a distance of 30.00 feet from said corner; Thence, South 89 degrees 41 minutes 00 seconds West with the south line of said quarter, passing through the afore-mentioned iron pin at 30.00 feet, a total distance of 528.45 feet to a wooden corner fence post found and accepted as marking the south east corner of a parcel currently owned by D. Bursley (deed reference: ORV 507, P. 284), the same being the south west corner of a parcel currently owned by L. & J. Rondy (deed reference: Volume 832, Page 561);

Thence, North 00 degrees 28 minutes 24 seconds East with the line common to the aforementioned parties, a distance of 475.00 feet to an iron pin set marking the northwest corner of said Rondy parcel, the same being the southwest corner of a parcel currently owned by T. Pickworth (deed reference: ORV 1760, P. 230);

Thence, South 62 degrees 23 minutes 02 seconds East with the line common to the aforementioned parties, passing through a drill hole set in a concrete bridge deck at 585.40 feet, a total distance of 593.40 feet to a point on the centerline of the Mansfield-Norwalk Road (State Route 13), the same being the east line of said quarter, said point being the easterly common corner of the afore mentioned parties;

Thence, South 00 degrees 22 minutes 15 seconds West with said centerline and said east line, a distance of 197.00 feet to the place of beginning, containing 4.07 acres, according to survey by Douglas C. Seiler, Professional Surveyor #6869 for Seiler & Craig Surveying, Inc., on December 3, 2007, but subject to the right of way of State Route 13.

Iron pins set are 5/8" rods with caps stamped "SEILER AND CRAIG INC.".

Bearings are based on an assumed meridian and are intended to be used for angular determination only.



Douglas C. Seiler PS #6869
for ~~Seiler & Craig~~ Surveying, Inc.

NEW SURVEY
OF EXISTING PARCEL
RICHLAND COUNTY
TAX MAP. OFFICE

MLC / 12-4-07
INITIAL / DATE