

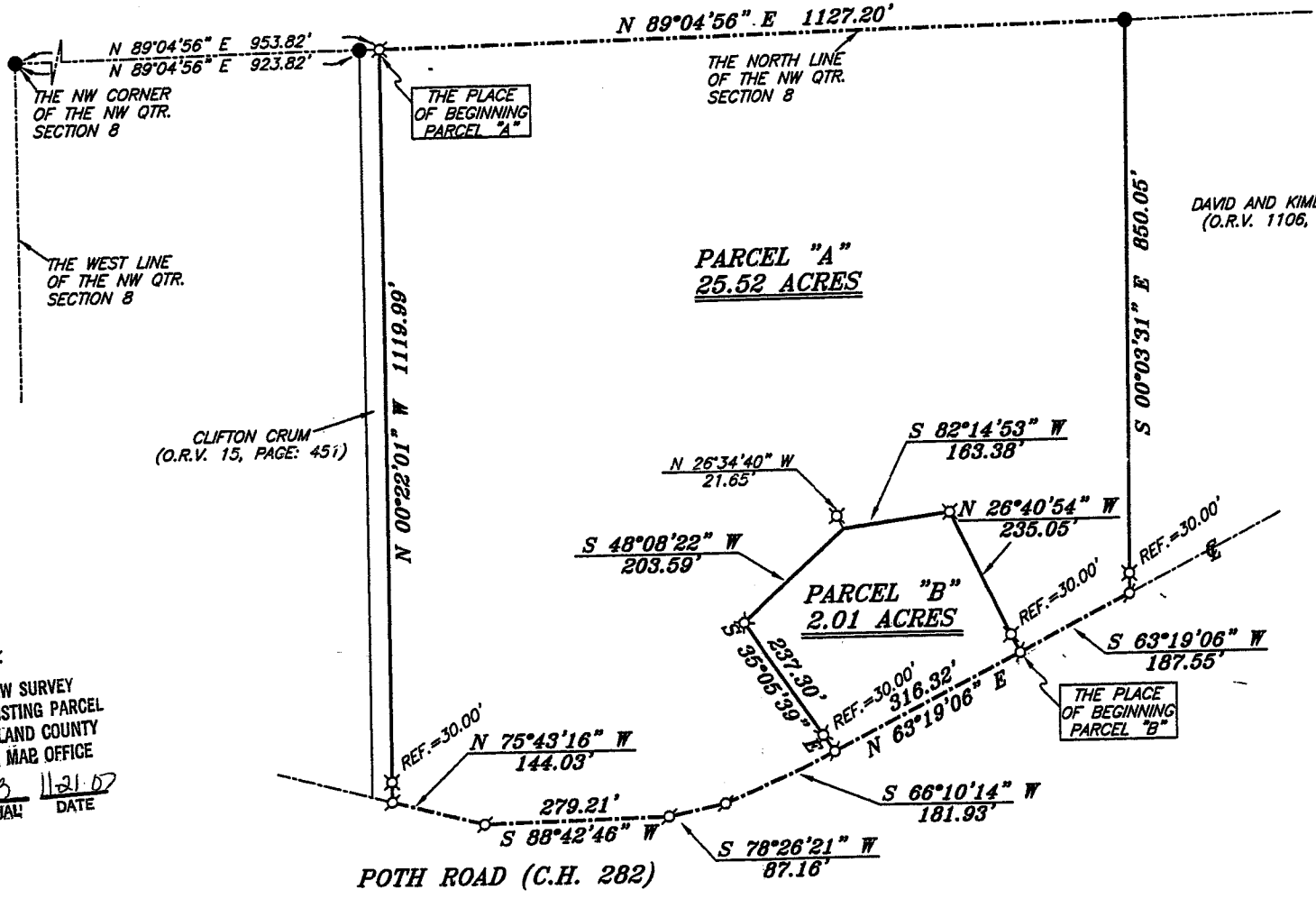
NORTH



BEARINGS ARE BASED ON AN ASSUMED MERIDIAN AND ARE INTENDED TO BE USED FOR ANGULAR DETERMINATION ONLY.

NEW SPLIT  
RICHLAND COUNTY  
TAX MAP OFFICE  
MLB 11-21-07  
INITIAL DATE

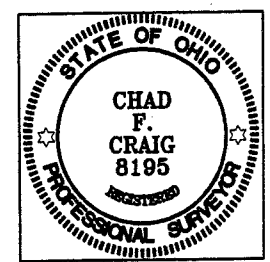
NEW SURVEY  
OF EXISTING PARCEL  
RICHLAND COUNTY  
TAX MAP OFFICE  
MLB 11-21-07  
INITIAL DATE



DAVID AND KIMBERLY ADAMS  
(O.R.V. 1106, PAGE: 297)

CLIFTON CRUM  
(O.R.V. 15, PAGE: 451)

*Approved  
Madison Twp Zoning  
Wayne A. Huffman*



*Chad F. Craig*

SURVEY BY: CHAD F. CRAIG P.S. #8195  
for SEILER & CRAIG SURVEYING INC.  
52-1/2 NORTH MAIN STREET  
MANSFIELD, OHIO 44902  
(419) 525-3644  
FAX (419) 525-3696

**LEGEND**

- IRON PIN FOUND
- ⊠ 2" MAG NAIL SPIKE SET
- ▲ RAILROAD SPIKE FOUND
- ⊠ 5/8" IRON PIN SET WITH CAP  
STAMPED "SEILER AND CRAIG, INC."

SURVEY PLAT FOR	
RICHLAND COUNTY FISH AND GAME CLUB	
PT. NW QTR. SECTION 8, T-21, R-18 MADISON TOWNSHIP RICHLAND COUNTY, OHIO	
DATE: NOVEMBER 9, 2004	SCALE: 1"=200'
FISHANDGAME.DWG	

Z-30

**SEILER & CRAIG SURVEYING, INC.**

*Douglas C. Seiler, PS & Chad F. Craig, PS*  
52 1/2 North Main Street  
Mansfield, Ohio 44902  
419-525-3644 Fax 419-525-3696  
[www.seilerandcraig.com](http://www.seilerandcraig.com)

**SURVEY DESCRIPTION  
PARCEL "A"**

**PART OF THE NW QUARTER OF SECTION 8  
MADISON TOWNSHIP  
RICHLAND COUNTY, OHIO**

Situated in the Township of Madison, County of Richland, State of Ohio and being a part of the Northwest Quarter of Section 8, of Township 21 North, Range 18 West, and being more particularly described as follows:

Commencing at an iron pin found and accepted as marking the northwest corner of said quarter; Thence, North 89 degrees 04 minutes 56 seconds East with the north line of said quarter, passing through an iron pin found at 923.82 feet, a total distance of 953.82 feet to an iron pin set, the place of beginning of the herein described parcel;

Thence, continuing North 89 degrees 04 minutes 56 seconds East with said north line, a distance of 1127.20 feet to an iron pin found, said iron pin marking the northwest corner of a parcel currently owned by David and Kimberly Adams (deed reference: O.R.V. 1106, Page: 297);

Thence, South 00 degrees 03 minutes 31 seconds East with the west line of said Adams parcel, passing through an iron pin set for reference at 820.05 feet, a total distance of 850.05 feet to a Mag Nail spike set in the centerline of Poth Road (C.H. 282);

Thence, South 63 degrees 19 minutes 06 seconds West with said centerline, a distance of 187.55 feet to a Mag Nail spike set;

Thence, North 26 degrees 40 minute 54 seconds West passing through an iron pin set for reference at 30.00 feet, a total distance of 235.05 feet to an iron pin set;

Thence, South 82 degrees 14 minute 53 seconds West a distance of 163.38 feet to a point referenced by an iron pin set on a bearing of North 26 degrees 34 minutes 40 seconds West and at a distance of 21.65 feet;

Thence, South 48 degrees 08 minutes 22 seconds West a distance of 203.59 feet to an iron pin set;

Thence, South 35 degrees 05 minutes 39 seconds East passing through an iron pin set for reference at 207.30 feet, a total distance of 237.30 feet to a Mag Nail spike set in the centerline of Poth Road;

Thence, South 66 degrees 10 minutes 14 seconds West with said centerline, a distance of 181.93 feet to a Mag Nail spike set;

Thence, South 78 degrees 26 minutes 21 seconds West with said centerline, a distance of 87.16 feet to a Mag Nail spike set;

Thence, South 88 degrees 42 minutes 46 seconds West with said centerline, a distance of 279.21 feet to a Mag Nail spike set;

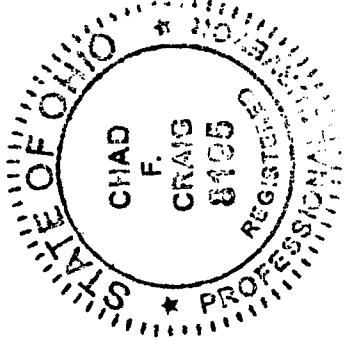
Thence, North 75 degrees 43 minutes 16 seconds West with said centerline a distance of 144.03 feet to an Mag Nail spike set on the southeast corner of a parcel currently owned by Clifton Crum (deed reference: O.R.V. 15, Page: 451);

Thence, North 00 degrees 22 minutes 01 second West with the east line of said Crum parcel, passing through an iron pin set for reference at 30.00 feet, a total distance of 1119.99 feet to the place of beginning, containing 25.52 acres according to survey by Chad F. Craig P.S. #8195 for Seiler & Craig Surveying, Inc. on November 9, 2007.

Iron pins set are 5/8" rods with caps stamped "SEILER AND CRAIG INC".

Bearings are based on an assumed meridian and are intended to be used for angular determination only.

Mag Nails set are 2" spikes.



*Chad F. Craig*

Chad F. Craig P.S.#8195  
for Seiler & Craig Surveying, Inc.

NEW SPLIT  
HIGHLAND COUNTY  
TAX MAP OFFICE

MLB 11/21/07  
INITIAL DATE

*Approved*  
*Madison Twp Zoning*  
*Wayne C. Ferguson*

Z-30

**SEILER & CRAIG SURVEYING, INC.**

Douglas C. Seiler, PS & Chad F. Craig, PS  
52 1/2 North Main Street  
Mansfield, Ohio 44902  
419-525-3644 Fax 419-525-3696  
www.seilerandcraig.com

**SURVEY DESCRIPTION  
PARCEL "B"**

PART OF THE NW QUARTER OF SECTION 8  
MADISON TOWNSHIP  
RICHLAND COUNTY, OHIO

Situated in the Township of Madison, County of Richland, State of Ohio and being a part of the Northwest Quarter of Section 8, of Township 21 North, Range 18 West, and being more particularly described as follows:

Commencing at an iron pin found and accepted as marking the northwest corner of said quarter; Thence, North 89 degrees 04 minutes 56 seconds East with the north line of said quarter, passing through an iron pin found at 923.82 feet, a total distance of 953.82 feet to an iron pin set; Thence, continuing North 89 degrees 04 minutes 56 seconds East with said north line, a distance of 1127.20 feet to an iron pin found, said iron pin marking the northwest corner of a parcel currently owned by David and Kimberly Adams (deed reference: O.R.V. 1106, Page: 297);

Thence, South 00 degrees 03 minutes 31 seconds East with the west line of said Adams parcel, passing through an iron pin set for reference at 820.05 feet, a total distance of 850.05 feet to a Mag Nail spike set in the centerline of Poth Road (C.H. 282);

Thence, South 63 degrees 19 minutes 06 seconds West with said centerline, a distance of 187.55 feet to a Mag Nail spike set, the place of beginning of the herein described parcel;

Thence, North 26 degrees 40 minute 54 seconds West passing through an iron pin set for reference at 30.00 feet, a total distance of 235.05 feet to an iron pin set;

Thence, South 82 degrees 14 minute 53 seconds West a distance of 163.38 feet to a point referenced by an iron pin set on a bearing of North 26 degrees 34 minutes 40 seconds West and at a distance of 21.65 feet;

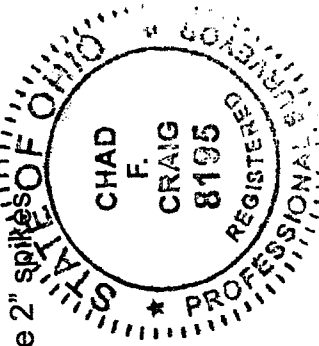
Thence, South 48 degrees 08 minutes 22 seconds West a distance of 203.59 feet to an iron pin set;

Thence, South 35 degrees 05 minutes 39 seconds East passing through an iron pin set for reference at 207.30 feet, a total distance of 237.30 feet to a Mag Nail spike set in the centerline of Poth Road;

Thence, North 63 degrees 19 minutes 06 seconds East with said centerline, a distance of 316.32 feet to the place of beginning, containing 2.01 acres according to survey by Chad F. Craig P.S. #8195 for Seiler & Craig Surveying, Inc. on November 9, 2007.

Iron pins set are 5/8" rods with caps stamped "SEILER AND CRAIG INC".

Bearings are based on an assumed meridian and are intended to be used for angular determination only.



Approved Tap Zoning  
Madison Tap Zoning  
Name or Address

Chad F. Craig  
Chad F. Craig P.S.#8195

for Seiler & Craig Surveying, Inc.

NEW SURVEY  
OF EXISTING PARCEL  
RICHLAND COUNTY  
TAX MAP OFFICE  
DATE

MB  
INITIAL