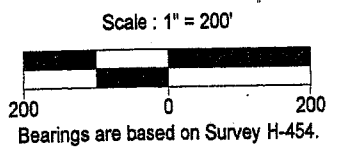
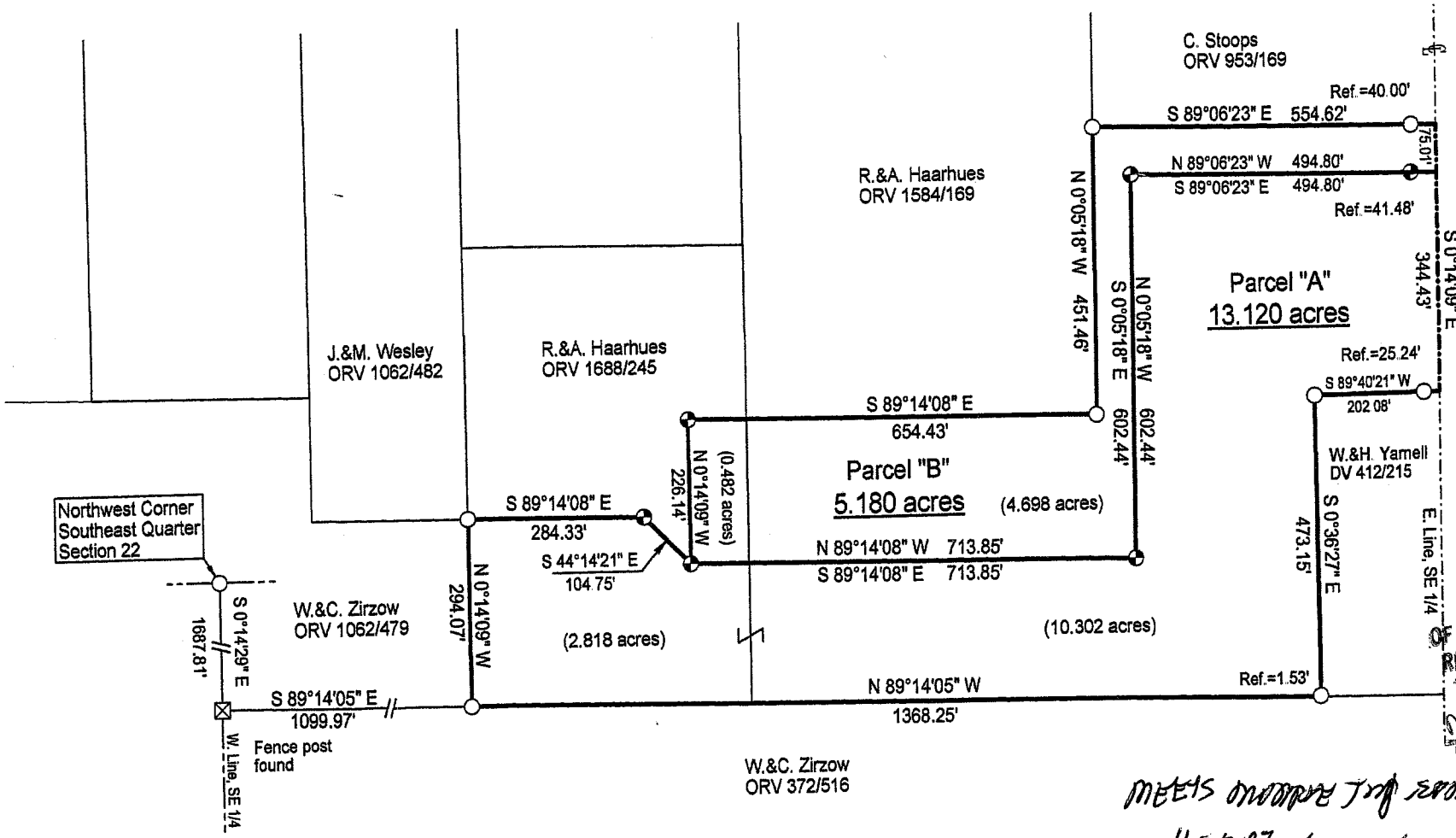


2-29

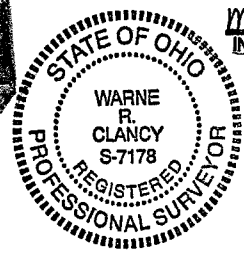
SURVEY PLAT

Parts Southeast Quarter - Section 22
Monroe Township, T-22, R-17
Richland County, Ohio



NEW SURVEY
OF EXISTING PARCEL
RICHLAND COUNTY
TAX MAP OFFICE
MLB
INITIAL
DATE 11-21-07

NEW SPLIT
RICHLAND COUNTY
TAX MAP OFFICE
MLB
INITIAL
DATE 11-21-07



LEGEND

- Iron pin set with cap stamped "CLANCY 7178"
- Iron pin found

MEETS MONROE TWP BOUNDARY
11-20-07
William R. Clancy

Warne R. Clancy
Warne R. Clancy
P.S. #7178

DATE: 11/14/07
JOB NO.: W110607

SURVEY DESCRIPTION

Part Southeast Quarter – Section 22
Monroe Township, T-22, R -17
Richland County, Ohio

Situated in the Township of Monroe, County of Richland, State of Ohio, and being a part of the Southeast Quarter of Section 22 of Township 22 of Range 17, more particularly described as follows:

Commencing for the same at an iron pin found marking the northwest corner of said quarter; Thence, South 00 degrees 14 minutes 29 seconds East with the west line of said quarter, a distance of 1687.81 feet to a Fence post found marking the southwest corner of a parcel owned by W. & C. Zirzow (ORV 1062/479); Thence, South 89 degrees 14 minutes 05 seconds East with the south line of said parcel, a distance of 1099.97 feet to an iron pin found marking the southwest corner of a parcel owned by R. & A. Haarhues (ORV 1688/245), the Place of Beginning;

Thence, North 00 degrees 14 minutes 09 seconds West with the west line of said parcel, a distance of 294.07 feet to an iron pin found marking the southeast corner of a parcel owned by J. & M. Wesley (ORV 1062/482);

Thence, South 89 degrees 14 minutes 08 seconds East, a distance of 284.33 feet to an iron pin set;

Thence, South 44 degrees 14 minutes 21 seconds East, a distance of 104.75 feet to an iron pin set;

Thence, South 89 degrees 14 minutes 08 seconds East, a distance of 713.85 feet to an iron pin set;

Thence, North 00 degrees 05 minutes 18 seconds West, a distance of 602.44 feet to an iron pin set;

Thence, South 89 degrees 06 minutes 23 seconds East, passing an iron pin set for reference at 453.32 feet, a distance of 494.80 feet to a point on the east line of said quarter, the same being the centerline of the Shiloh – Newville Road (S.R. 603);

Thence, South 00 degrees 14 minutes 09 seconds East with said east and centerlines, a distance of 344. 43 feet to the northeast corner of a parcel owned by W. & H. Yarnell (DV 412/215);

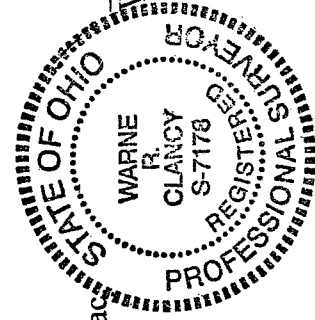
Thence, South 89 degrees 40 minute 21 seconds West, passing an iron pin found for reference at 25.24 feet, a distance of 202.08 feet to an iron pin found marking the northwest corner of said parcel;

Thence, South 00 degrees 36 minutes 27 seconds East, passing an iron pin found for reference at 471.62 feet, a distance of 473.15 feet to a point on the north line of a parcel also owned by W. & C. Zirzow (ORV 372/516);

Thence, North 89 degrees 14 minutes 05 seconds West with said north line, a distance of 1368.25 feet to the Place of Beginning, containing 13.120 acres according to survey by Warne R. Clancy, Professional Surveyor #7178, on November 6, 2007.

Iron pins set are #5 rebars with caps stamped "CLANCY 7178".

Bearings are based on Survey H-454.



Parcel "A" – 13.120 ac

Warne R. Clancy
Warne R. Clancy
P.S. 7178

NEW SPLIT
RICHLAND COUNTY
TAX MAP OFFICE
MLC INITIAL DATE
11-21-07



Z-29

SURVEY DESCRIPTION

Part Southeast Quarter – Section 22
Monroe Township, T-22, R -17
Richland County, Ohio

Situated in the Township of Monroe, County of Richland, State of Ohio, and being a part of the Southeast Quarter of Section 22 of Township 22 of Range 17, more particularly described as follows:

Commencing for the same at an iron pin found marking the northwest corner of said quarter; Thence, South 00 degrees 14 minutes 29 seconds East with the west line of said quarter, a distance of 1687.81 feet to a Fence post found marking the southwest corner of a parcel owned by W. & C. Zirzow (ORV 1062/479); Thence, South 89 degrees 14 minutes 05 seconds East with the south line of said parcel, a distance of 1099.97 feet to an iron pin found marking the southwest corner of a parcel owned by R. & A. Haarhues (ORV 1688/245); Thence, North 00 degrees 14 minutes 09 seconds West with the west line of said parcel, a distance of 294.07 feet to an iron pin found marking the southeast corner of a parcel owned by J. & M. Wesley (ORV 1062/482); Thence, South 89 degrees 14 minutes 08 seconds East, a distance of 284.33 feet to an iron pin set; Thence, South 44 degrees 14 minutes 21 seconds East, a distance of 104.75 feet to an iron pin set, the Place of Beginning;

Thence, North 00 degrees 14 minutes 09 seconds West, a distance of 226.14 feet to an iron pin set;

Thence, South 89 degrees 14 minutes 08 seconds East, a distance of 654.43 feet to an iron pin found marking the southeast corner of a parcel also owned by R. & A. Haarhues (ORV 1584/169);

Thence, North 00 degrees 05 minutes 18 seconds West with the west line of said parcel, a distance of 451.46 feet to an iron pin found marking the southwest corner of a parcel owned by C. Stoops (ORV 953/169);

Thence, South 89 degrees 06 minutes 23 seconds East with the south line of said parcel, passing an iron pin found for reference at 514.62 feet, a distance of 554.62 feet to a point on the east line of said quarter, the same being the centerline of the Shiloh – Newville Road (S.R. 603);

Thence, South 00 degrees 14 minutes 09 seconds East with said east and centerlines, a distance of 75.01 feet to a point thereon;

Thence, North 89 degrees 06 minute 23 seconds West, passing an iron pin set for reference at 41.48 feet, a distance of 494.80 feet to an iron pin set;

Thence, South 00 degrees 05 minutes 18 seconds East, a distance of 602.44 feet to an iron pin set;

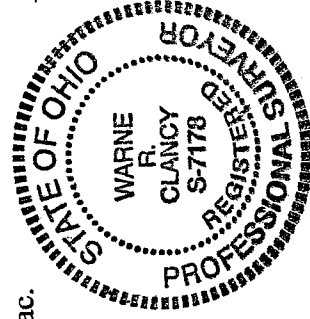
Thence, North 89 degrees 14 minutes 08 seconds West, a distance of 713.85 feet to the Place of Beginning, containing 5.180 acres according to survey by Warne R. Clancy, Professional Surveyor #7178, on November 6, 2007.

Iron pins set are #5 rebars with caps stamped "CLANCY 7178".

Bearings are based on Survey H-454.

Parcel "B" – 5.180 ac.

Warne R. Clancy
Warne R. Clancy
P.S. #7178



NEW SURVEY.
OF EXISTING PARCEL
RICHLAND COUNTY,
TAX MAP OFFICE

MIB INITIAL *11-21-07* DATE

NEW SPLIT
RICHLAND COUNTY
TAX MAP OFFICE

MIB INITIAL *11-21-07* DATE