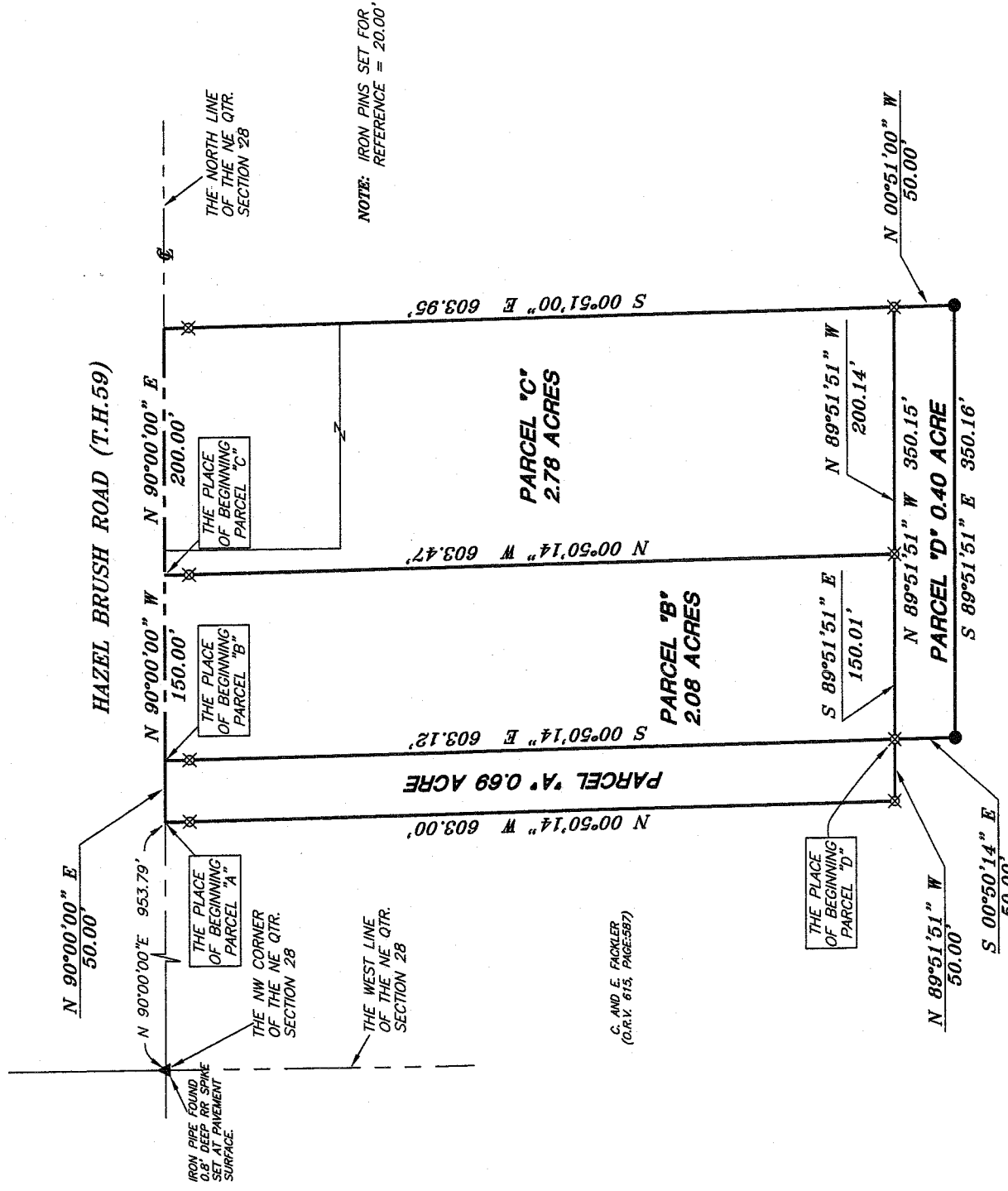


BEARINGS ARE BASED ON AN ASSUMED MERIDIAN AND ARE INTENDED TO BE USED FOR ANGULAR DETERMINATION ONLY.



C. AND E. FACKLER  
(O.R.V. 615, PAGE 587)

As to parcel A, B & D  
 NEW SPLIT  
 RICHLAND COUNTY  
 TAX MAP OFFICE  
 MFB 1-24-07  
 INITIAL DATE  
 Parcels A+B  
 must Transfer  
 First!

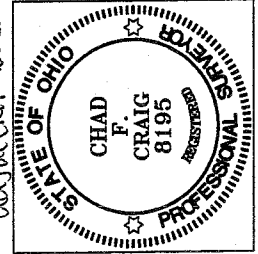
C. AND E. FACKLER  
(O.R.V. 615, PAGE 587)

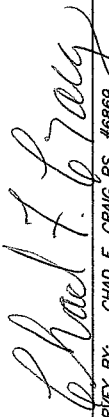
NEW SURVEY  
 OF EXISTING PARCEL  
 RICHLAND COUNTY  
 TAX MAP OFFICE  
 MFB 1-24-07  
 INITIAL DATE

- LEGEND**
- IRON PIN FOUND
  - MAG NAIL SPIKE SET
  - ▲ RAILROAD SPIKE FOUND
  - ✱ 5/8" IRON PIN SET WITH CAP STAMPED "SELLER AND CRAIG, INC."

Approved, No plat required.  
 Parcels A+B do not meet  
 minor subdivision regulations  
 independently, and can only  
 be transferred as part of a  
 sale or exchange between  
 adjacent landowners with additional  
 road frontage.

Verbal approval  
 Bruce Berdanier  
 1-18-07



SURVEY BY:  
  
 CHAD F. CRAIG, PS. #8869  
 for SELLER & CRAIG SURVEYING INC.  
 52-1/2 NORTH MAIN STREET  
 MANSFIELD, OHIO 44902  
 (419) 525-3644  
 FAX (419) 525-3696

SURVEY PLAT FOR  
 BARNHART  
 PART NE QTR SECTION 28, T-23, R-19  
 CASS TOWNSHIP  
 RICHLAND COUNTY, OHIO  
 DATE: JANUARY 5, 2007 SCALE: 1"=100'  
 BARNHART.DWG

**SEILER & CRAIG SURVEYING, INC.**

Douglas C. Seiler, PS & Chad F. Craig, PS  
52 1/2 North Main Street  
Mansfield, Ohio 44902  
419-525-3644 Fax 419-525-3696  
www.seilerandcraig.com

**SURVEY DESCRIPTION  
PARCEL "A"**

PART OF THE NE QUARTER OF SECTION 28  
CASS TOWNSHIP  
RICHLAND COUNTY, OHIO

Situated in the Township of Cass, County of Richland, State of Ohio and being a part of the Northeast Quarter of Section 28, of Township 23 North, Range 19 West, and being more particularly described as follows:

Commencing at a railroad spike set marking the northwest corner of said quarter, the same being a point in the centerline of Hazel Brush Road (T. H. 59); Thence, North 90 degrees 00 minutes 00 East seconds with the north line of said quarter and said centerline, a distance of 953.79 feet to a point referenced by an iron pin set on a bearing of South 00 degrees 50 minutes 14 seconds East and at a distance of 20.00 feet, the place of beginning of the herein described parcel;

Thence, continuing North 90 degrees 00 minutes 00 seconds East with said north line and said centerline, a distance of 50.00 feet to a point referenced by an iron pin set on a bearing of South 00 degrees 50 minutes 14 seconds East and at a distance of 20.00 feet;

Thence, South 00 degrees 50 minutes 14 seconds East passing through said reference pin, a total distance of 603.12 feet to an iron pin set;

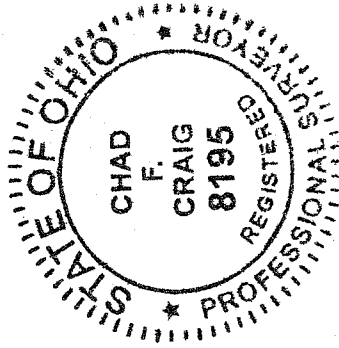
Thence, North 89 degrees 51 minutes 51 seconds West a distance of 50.00 feet to an iron pin set;

Thence, North 00 degrees 50 minutes 14 seconds West passing through an iron pin set for reference at 583.00, a total distance of 603.00 feet to the place of beginning, containing 0.69 acre according to survey by Chad F. Craig P.S. #8195 for Seiler & Craig Surveying, Inc. on January 5, 2007.

Iron pins set are 5/8" rods with caps stamped "SEILER AND CRAIG INC".

Bearings are based on an assumed meridian and are intended to be used for angular determination only.

The grantee, his heirs and assigns do hereby convent and agree that the parcel described by this instrument will not be transferred by said grantee, heirs, or assigns independently from a contiguous parcel of land with road frontage without the approval of the Richland County Regional Planning Commission.



NEW SPLIT  
RICHLAND COUNTY  
TAX MAP OFFICE  
MLB 1-24-07  
INITIAL DATE

*Chad F. Craig*

Chad F. Craig, P.S. #8195  
for Seiler & Craig Surveying, Inc.

**SEILER & CRAIG SURVEYING, INC.**

*Douglas C. Seiler, PS & Chad F. Craig, PS*

*52 1/2 North Main Street*

*Mansfield, Ohio 44902*

*419-525-3644 Fax 419-525-3696*

*www.seilerandcraig.com*

**SURVEY DESCRIPTION  
PARCEL "B"**

**PART OF THE NE QUARTER OF SECTION 28  
CASS TOWNSHIP  
RICHLAND COUNTY, OHIO**

Situated in the Township of Cass, County of Richland, State of Ohio and being a part of the Northeast Quarter of Section 28, of Township 23 North, Range 19 West, and being more particularly described as follows:

Commencing at a railroad spike set marking the northwest corner of said quarter, the same being a point in the centerline of Hazel Brush Road (T. H. 59); Thence, North 90 degrees 00 minutes 00 seconds East with the north line of said quarter and said centerline, a distance of 1003.79 feet to a point referenced by an iron pin set on a bearing of South 00 degrees 50 minutes 14 seconds West and at a distance of 20.00 feet, the place of beginning of the herein described parcel;

Thence, South 00 degrees 50 minutes 14 seconds East passing through said reference pin, a total distance of 603.12 feet to an iron pin set;

Thence, South 89 degrees 51 minutes 51 seconds East a distance of 150.01 feet to an iron pin set;

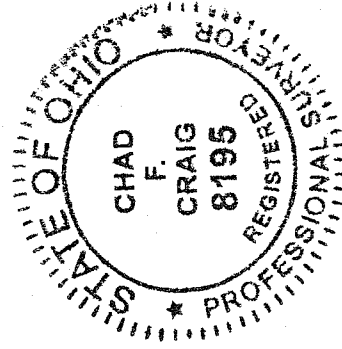
Thence, North 00 degrees 50 minutes 14 seconds West passing through an iron pin set for reference at 583.47 feet, a total distance of 603.47 feet to a point on said north line and said centerline;

Thence, North 90 degrees 00 minutes 00 seconds West with said north line and said centerline, a distance of 150.00 feet to the place of beginning, containing 2.08 acres according to survey by Chad F. Craig P.S. #8195 for Seiler & Craig Surveying, Inc. on January 5, 2007.

Iron pins set are 5/8" rods with caps stamped "SEILER AND CRAIG INC".

Bearings are based on an assumed meridian and are intended to be used for angular determination only.

The grantee, his heirs and assigns do hereby consent and agree that the parcel described by this instrument will not be transferred by said grantee, heirs, or assigns independently from a contiguous parcel of land with road frontage without the approval of the Richland County Regional Planning Commission.



NEW SPLIT  
RICHLAND COUNTY  
TAX MAP OFFICE

INITIAL DATE  
MFB 1-24-07

Chad F. Craig P.S.#8195  
for Seiler & Craig Surveying, Inc.

**SEILER & CRAIG SURVEYING, INC.**

Douglas C. Seiler, PS & Chad F. Craig, PS  
52 1/2 North Main Street  
Mansfield, Ohio 44902  
419-525-3644 Fax 419-525-3696  
www.seilerandcraig.com

**SURVEY DESCRIPTION  
PARCEL "C"**

PART OF THE NE QUARTER OF SECTION 28  
CASS TOWNSHIP  
RICHLAND COUNTY, OHIO

Situated in the Township of Cass, County of Richland, State of Ohio and being a part of the Northeast Quarter of Section 28, of Township 23 North, Range 19 West, and being more particularly described as follows:

Commencing at a railroad spike set marking the northwest corner of said quarter, the same being a point in the centerline of Hazel Brush Road (T. H. 59); Thence, North 90 degrees 00 minutes 00 seconds with the north line of said quarter and said centerline, a distance of 1153.79 feet to a point referenced by an iron pin set on a bearing of South 00 degrees 50 minutes 14 seconds East and at a distance of 20.00 feet, the place of beginning of the herein described parcel;

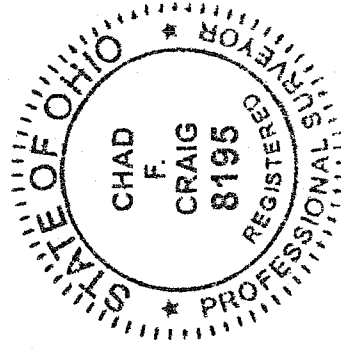
Thence, continuing North 90 degrees 00 minutes 00 seconds East with said north line and said centerline, a distance of 200.00 feet to a point, said point being the northwest corner of a parcel currently owned by C. and E. Facler (deed reference: O.R.V. 615, Page: 587) and referenced by an iron pin set on a bearing of South 00 degrees 51 minutes 00 seconds East and at a distance of 20.00 feet;

Thence, South 00 degrees 51 minutes 00 seconds East with the west line of said Rhodes parcel, passing through said reference pin, a total distance of 603.95 feet to an iron pin set; Thence, North 89 degrees 51 minutes 51 seconds West a distance of 200.14 feet to an iron pin set;

Thence, North 00 degrees 50 minutes 14 seconds West passing through an iron pin set for reference at 583.47 feet, a total distance of 603.47 feet to the place of beginning, containing 2.78 acres according to survey by Chad F. Craig P.S. #8195 for Seiler & Craig Surveying, Inc. on January 5, 2007.

Iron pins set are 5/8" rods with caps stamped "SEILER AND CRAIG INC".

Bearings are based on an assumed meridian and are intended to be used for angular determination only.



*Chad F. Craig*  
Chad F. Craig P.S.#8195  
for Seiler & Craig Surveying, Inc.

NEW SURVEY  
OF EXISTING PARCEL  
RICHLAND COUNTY,  
TAX MAP OFFICE

MSB 124-07  
INITIAL DATE

**SEILER & CRAIG SURVEYING, INC.**

Douglas C. Seiler, PS & Chad F. Craig, PS  
52 1/2 North Main Street  
Mansfield, Ohio 44902  
419-525-3644 Fax 419-525-3696  
www.seilerandcraig.com

**SURVEY DESCRIPTION  
PARCEL "D"**

PART OF THE NE QUARTER OF SECTION 28  
CASS TOWNSHIP  
RICHLAND COUNTY, OHIO

Situated in the Township of Cass, County of Richland, State of Ohio and being a part of the Northeast Quarter of Section 28, of Township 23 North, Range 19 West, and being more particularly described as follows:

Commencing at a railroad spike set marking the northwest corner of said quarter, the same being a point in the centerline of Hazel Brush Road (T. H. 59); Thence, North 90 degrees 00 minutes 00 seconds with the north line of said quarter and said centerline, a distance of 1003.79 feet to a point referenced by an iron pin set on a bearing of South 00 degrees 50 minutes 14 seconds East and at a distance of 20.00 feet, Thence, South 00 degrees 50 minutes 14 seconds East passing through said reference pin, a total distance of 603.12 feet to an iron pin set; the place of beginning of the herein described parcel;

Thence, continuing South 00 degrees 50 minutes 14 seconds East a distance of 50.00 feet to an iron pin found and accepted as marking an interior corner of a parcel currently owned by C. and E. Fackler (deed reference: O.R.V. 615, Page: 587);

Thence, South 89 degrees 51 minutes 51 seconds East with a line common to said Fackler parcel, a distance of 350.16 feet to an iron pin found and accepted as marking an interior corner thereof;

Thence, North 00 degrees 51 minutes 00 seconds West with the west line of said Fackler parcel, a distance of 50.00 feet to an iron pin set;

Thence, North 89 degrees 51 minutes 51 seconds West a distance of 350.15 feet to the place of beginning, containing 0.40 acre according to survey by Chad F. Craig P.S. #8195 for Seiler & Craig Surveying, Inc. on January 5, 2007.

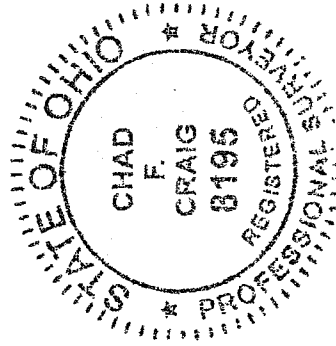
Iron pins set are 5/8" rods with caps stamped "SEILER AND CRAIG INC".

Bearings are based on an assumed meridian and are intended to be used for angular determination only.

The grantee, his heirs and assigns do hereby consent and agree that the parcel described by this instrument will not be transferred by said grantee, heirs, or assigns independently from a contiguous parcel of land with road frontage without the approval of the Richland County Regional Planning Commission.

NEW SPLIT  
RICHLAND COUNTY  
TAX MAP OFFICE

mub 12/10/07  
INITIAL DATE



*Chad F. Craig*

Chad F. Craig P.S.#8195  
for Seiler & Craig Surveying, Inc.