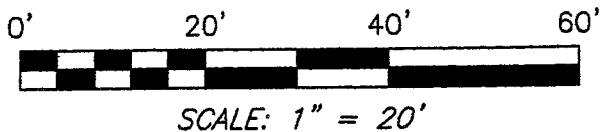


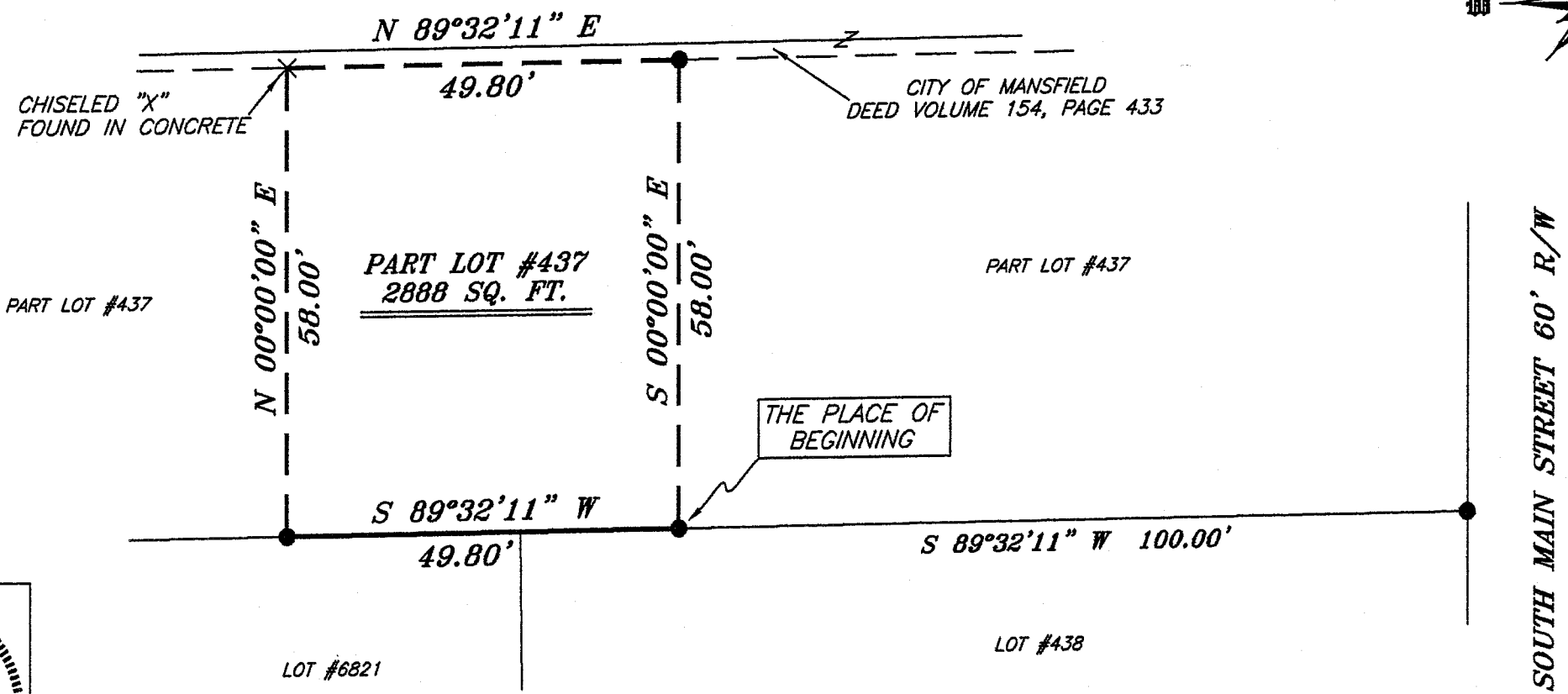
X-286



BEARINGS ARE BASED ON AN ASSUMED
MERIDIAN AND ARE INTENDED TO BE
USED FOR ANGULAR DETERMINATION ONLY



WILLIAMS AVENUE 16.5' R/W



NEW SURVEY
OF EXISTING PARCEL
RICHLAND COUNTY
TAX MAP OFFICE
MB 1-4-07
INITIAL DATE



Chad F. Craig

SURVEY BY: CHAD F. CRAIG P.S. #8195
for SEILER & CRAIG SURVEYING INC.
52-1/2 NORTH MAIN STREET
MANSFIELD, OHIO 44902
(419) 525-3644
FAX (419) 525-3696

THE PLACE OF BEGINNING

LEGEND

- IRON PIN FOUND
- ♂ MAG NAIL SPIKE SET
- ▲ RAILROAD SPIKE FOUND
- ⊗ 5/8" IRON PIN SET WITH CAP
STAMPED "SEILER AND CRAIG, INC."

SURVEY PLAT FOR PROPERTY TRANSFER	
PART LOT #437 CITY OF MANSFIELD RICHLAND COUNTY, OHIO	
DATE: DECEMBER 28, 2006	SCALE: 1"=20'
11WILLIAMSVE	

SEILER & CRAIG SURVEYING, INC.

Douglas C. Seiler, PS & Chad F. Craig, PS

52 1/2 North Main Street

Mansfield, Ohio 44902

419-525-3644 Fax 419-525-3696

www.seilerandcraig.com

SURVEY DESCRIPTION

**PART OF LOT #437
CITY OF MANSFIELD, OHIO**

Situated in the City of Mansfield, County of Richland, State of Ohio and being known as a part of Lot #437 of the consecutively numbered lots in said city, and being more particularly described as follows:

Commencing at an iron pin found and accepted as marking the southeast corner of said lot; Thence, South 89 degrees 32 minutes 11 seconds West with the south line of said lot, a distance of 100.00 feet to an iron pin found, the place of beginning of the herein described parcel;

Thence, continuing South 89 degrees 32 minutes 11 seconds West with said south line, a distance of 49.80 feet to an iron pin found;

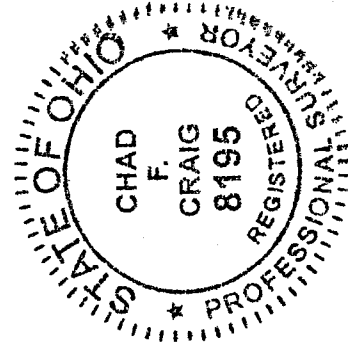
Thence, North 00 degrees 00 minutes 00 seconds East a distance of 58.00 feet to a chiseled "X" found in concrete on the south line of a parcel currently owned by the City of Mansfield (deed reference: Volume 154, Page: 433) ;

Thence, North 89 degrees 32 minutes 11 seconds East with said south line, a distance of 49.80 feet;

Thence, South 00 degrees 00 minutes 00 seconds East a distance of 58.00 feet to the place of beginning, containing 2888 square feet according to survey by Chad F. Craig P.S. #8195 for Seiler and Craig Surveying, Inc. on December 27, 2006.

Iron pins set are 5/8" rods with caps stamped "SEILER AND CRAIG, INC".

Bearings are based on an assumed meridian and are intended to be used for angular determination only.



NEW SURVEY
OF EXISTING PARCEL
RICHLAND COUNTY
TAX MAP OFFICE

MLC INITIAL
1-4-07 DATE

Chad F. Craig

Chad F. Craig P.S. #8195

for Seiler and Craig Surveying, Inc.

X-286