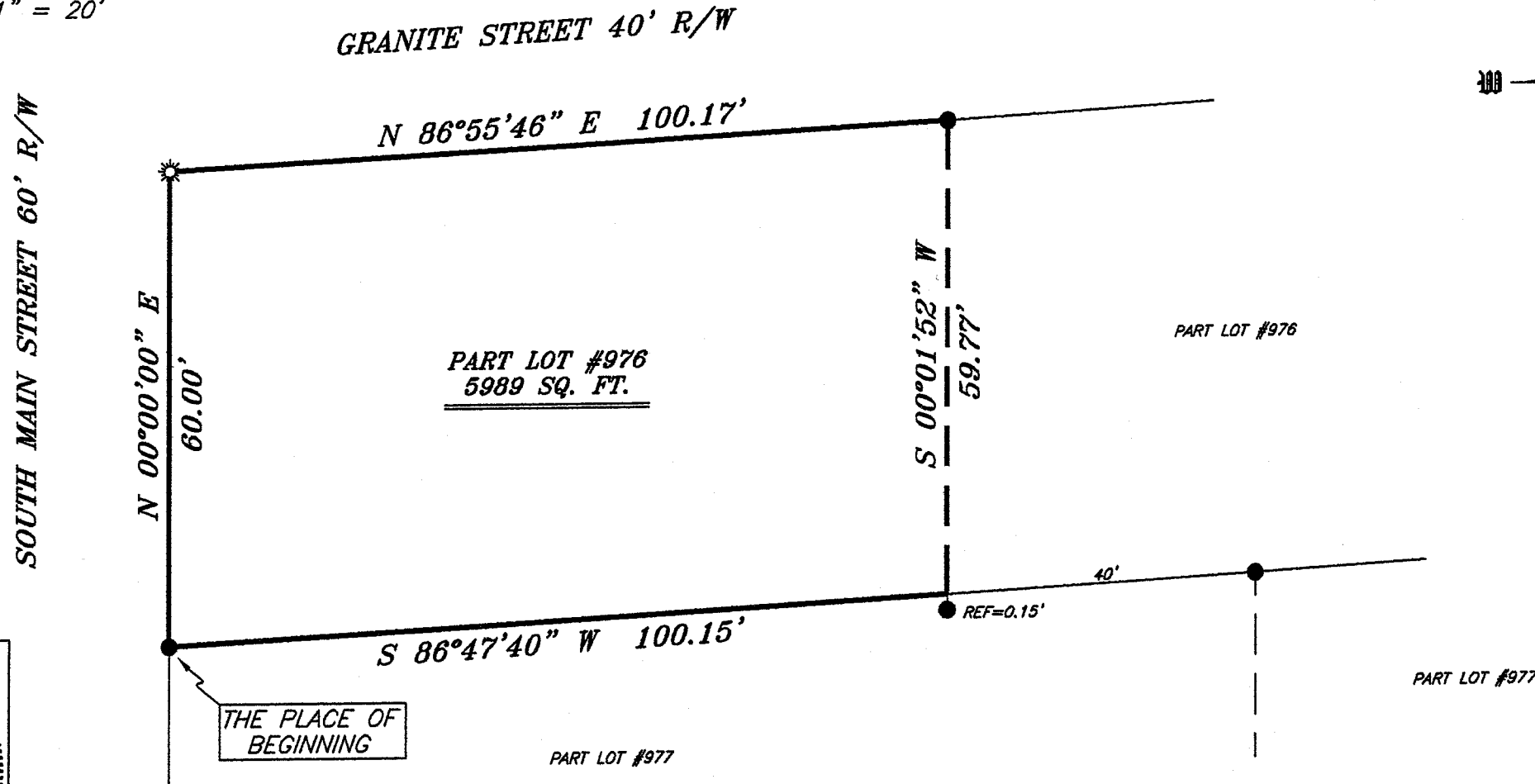
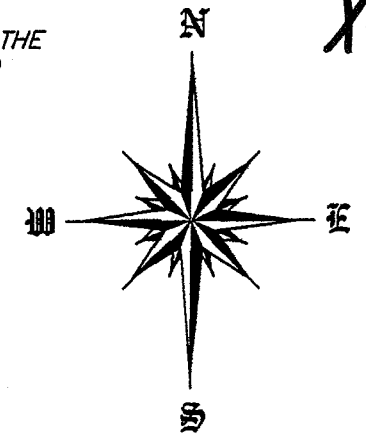




SCALE: 1" = 20'

BEARINGS ARE BASED ON SURVEY O-108 ON FILE AT THE RICHLAND COUNTY TAX MAP OFFICE AND ARE INTENDED TO BE USED FOR ANGULAR DETERMINATION ONLY

X-283



Chad F. Craig

SURVEY BY: CHAD F. CRAIG P.S. #8195
for SEILER & CRAIG SURVEYING INC.
52-1/2 NORTH MAIN STREET
MANSFIELD, OHIO 44902
(419) 525-3644
FAX (419) 525-3696

THE PLACE OF BEGINNING

PART LOT #976
5989 SQ. FT.

PART LOT #977

PART LOT #976

PART LOT #977

NEW SURVEY
OF EXISTING PARCEL
RICHLAND COUNTY
TAX MAP OFFICE
MCS 1-3-07
INITIAL DATE

LEGEND

- IRON PIN FOUND
- ☀ DRILL HOLE SET
- ▲ RAILROAD SPIKE FOUND
- ⊗ 5/8" IRON PIN SET WITH CAP
STAMPED "SEILER AND-CRAIG, INC."

SURVEY PLAT FOR	
BELL	
PART LOT #976 CITY OF MANSFIELD RICHLAND COUNTY, OHIO	
DATE: DECEMBER 27, 2006	SCALE: 1"=20'
313MAIN	

X-283

SEILER & CRAIG SURVEYING, INC.

Douglas C. Seiler, PS & Chad F. Craig, PS

52 1/2 North Main Street

Mansfield, Ohio 44902

419-525-3644 Fax 419-525-3696

www.seilerandcraig.com

SURVEY DESCRIPTION

**PART OF LOT # 976
CITY OF MANSFIELD, OHIO**

Situated in the City of Mansfield, County of Richland, State of Ohio and being known as a part of Lot #976 of the consecutively numbered lots in said city, and being more particularly described as follows:

Beginning for the same at an iron pin found and accepted as marking the southwest corner of said lot; Thence, North 00 degrees 00 minutes 00 seconds East with the west line of said lot, a distance of 60.00 feet to a drill hole set in concrete, said drill hole marking the northwest corner of said lot;

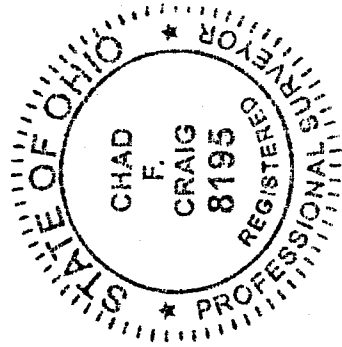
Thence, North 86 degrees 55 minutes 46 seconds East with the north line of said lot, a distance of 100.17 feet to an iron pin found;

Thence, South 00 degrees 01 minute 52 seconds West a distance of 59.77 feet to a point on the south line of said lot, said point referenced by an iron pin found on a bearing of South 00 degrees 01 minute 52 seconds West an at a distance of 0.15 feet;

Thence, South 86 degrees 47 minutes 40 seconds West with said south line, a distance of 100.15 feet to the place of beginning, containing 5989 square feet according to survey by Chad F. Craig P.S. #8195 for Seiler and Craig Surveying, Inc. on December 27, 2006.

Iron pins set are 5/8" rods with caps stamped "SEILER AND CRAIG, INC".

Bearings are based on Survey O-108 on file at the Richland County Tax Map office and are intended to be used for angular determination only.



NEW SURVEY
OF EXISTING PARCEL
RICHLAND COUNTY
TAX MAP OFFICE

INDEXIAL
DATE 1-3-07

Chad F. Craig

Chad F. Craig P.S. #8195
for Seiler and Craig Surveying, Inc.