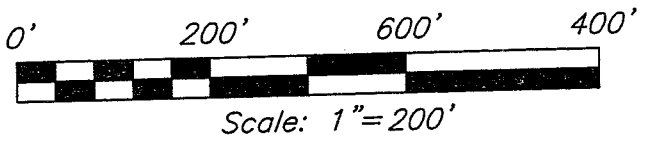
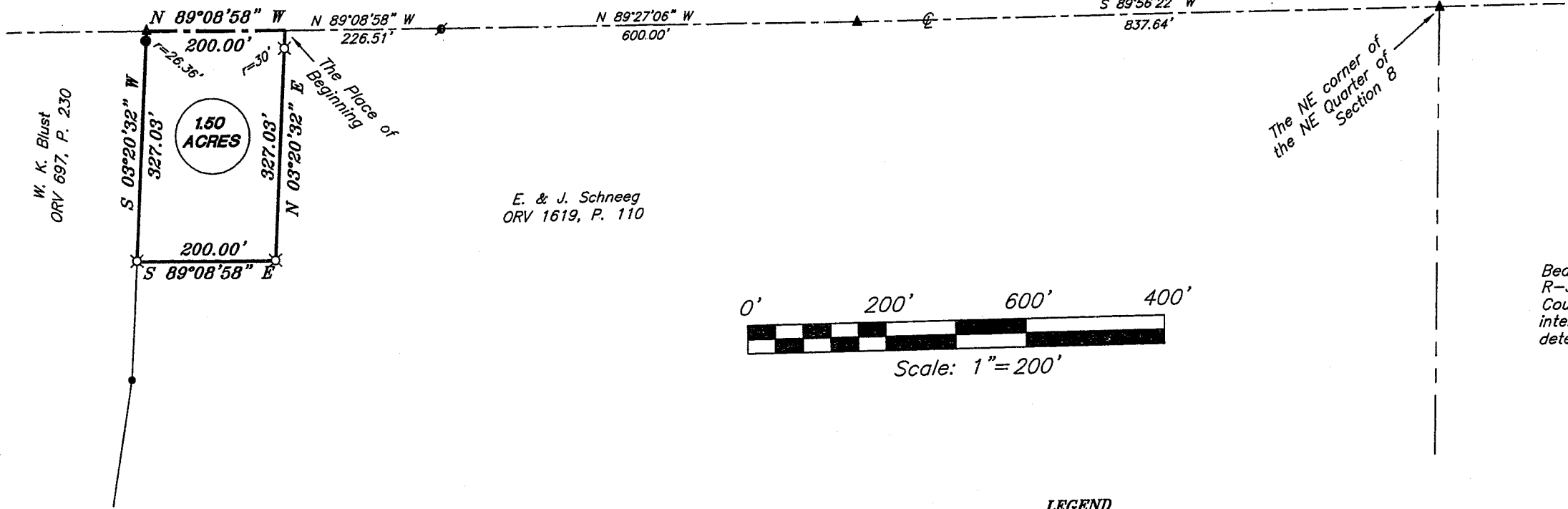


X-259
NORTH



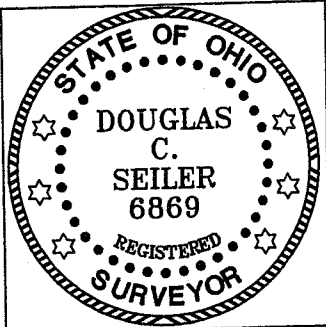
STATE ROUTE 96



Bearings are based on Survey R-303 on file at the Richland County Tax Map office, and are intended to be used for angular determination only.

LEGEND

- IRON PIN FOUND
- ✱ MAG NAIL SPIKE FOUND
- ▲ RAILROAD SPIKE FOUND
- ✱ 5/8" IRON PIN SET WITH CAP STAMPED "SEILER AND CRAIG, INC."



NEW SPLIT
RICHLAND COUNTY
TAX MAP OFFICE
MLB 12-12-06
INITIAL DATE

APPROVED 10 DEC 06
Edwin Kraybill Jr

SURVEY BY: DOUGLAS C. SEILER PS. #6869
for SEILER & CRAIG SURVEYING INC.
52-1/2 NORTH MAIN STREET
MANSFIELD, OHIO 44902
(419) 525-3644
FAX (419) 525-3696

SURVEY PLAT	
SCHNEEG	
PART NE QTR. SECTION 8, T-24 N, R-17 W WELLER TOWNSHIP RICHLAND COUNTY, OHIO	
Date: Nov. 29, 2006	Scale: 1" = 100'
schneeg06b.dwg	

X-259

SEILER & CRAIG SURVEYING, INC.

Douglas C. Seiler, PS & Chad F. Craig, PS
52 1/2 North Main Street
Mansfield, Ohio 44902
419-525-3644 Fax 419-525-3696
www.seilerandcraig.com

SURVEY DESCRIPTION

PART NE QUARTER SECTION 8
WELLER TOWNSHIP
RICHLAND COUNTY, OHIO

Situated in the Township of Weller, County of Richland, State of Ohio and being a part of the Northeast Quarter of Section 8, of Township 24 North, Range 17 West, and being more particularly described as follows:

Commencing on the centerline of State Route 96 at a railroad spike found and accepted as marking the northeast corner of said quarter; Thence, with said centerline, the following three courses and distances: (1) South 89 degrees 56 minutes 22 seconds West a distance of 837.64 feet to a railroad spike found (2) North 89 degrees 27 minutes 06 seconds West a distance of 600.00 feet to a Mag Nail spike found (3) North 89 degrees 08 minutes 58 seconds West a distance of 226.51 feet to the place of beginning of the parcel herein described, as referenced by an iron pin set on a bearing of South 03 degrees 20 minutes 32 seconds West and at a distance of 30.00 feet from said point;

Thence, continuing North 89 degrees 08 minutes 58 seconds West with said centerline, a distance of 200.00 feet to a railroad spike found;

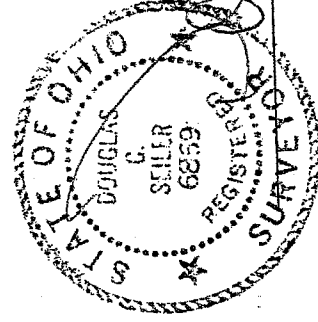
Thence, South 03 degrees 20 minutes 32 seconds West, passing through an iron pin found at 26.36 feet, a total distance of 327.03 feet to an iron pin set;

Thence, South 89 degrees 08 minutes 58 seconds East a distance of 200.00 feet to an iron pin set;

Thence, North 03 degrees 20 minutes 32 seconds East, passing through an iron pin set for reference at 297.03 feet, a total distance of 327.03 feet to the place of beginning, containing 1.50 acres, according to survey by Douglas C. Seiler, Professional Surveyor #68869 for Seiler & Craig Surveying, Inc. on November 29, 2006, but subject to the right of way of State Route 96.

Iron pins set are 5/8" rods with caps stamped "SEILER AND CRAIG INC."

Bearings are based on Survey R-303 on file at the Richland County Tax Map Office, and are intended to be used for angular determination only.



Douglas C. Seiler
Douglas C. Seiler PS #68869
for Seiler & Craig Surveying, Inc.

NEW SPLIT
RICHLAND COUNTY
TAX MAP OFFICE

MLC 12.18.06
INITIAL DATE