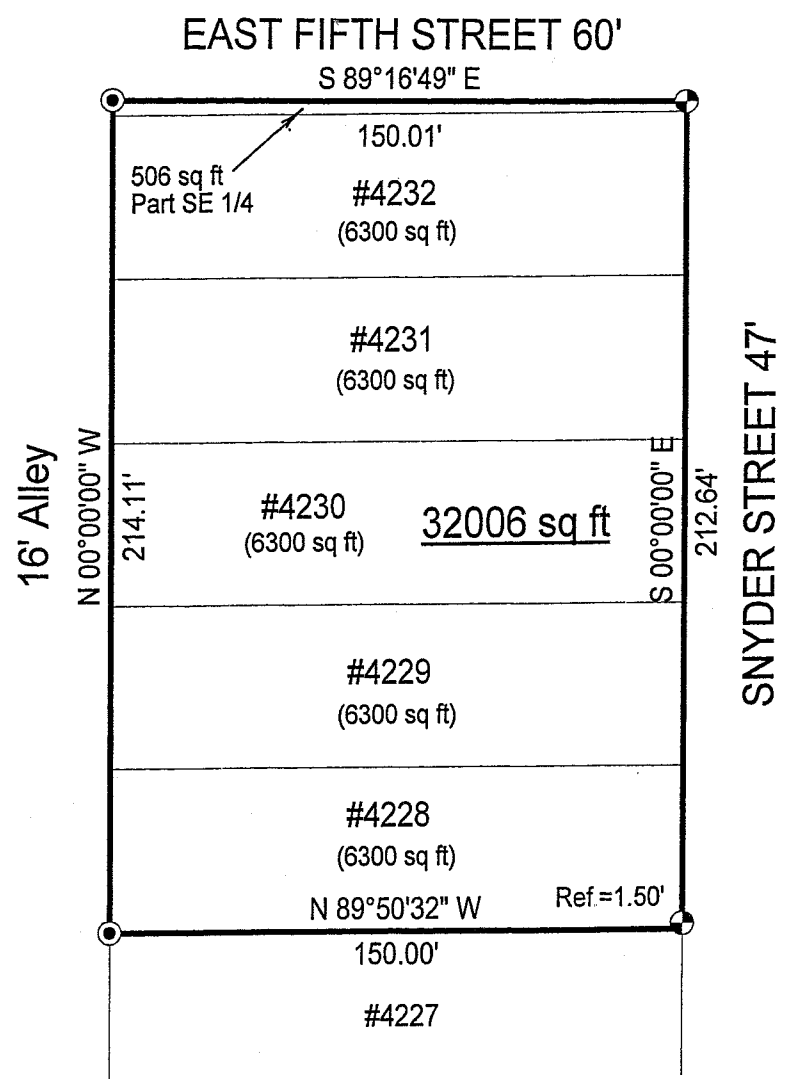


X-252

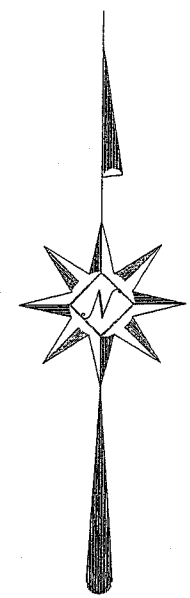
SURVEY PLAT

Lots #4228, #4229, #4230, #4231, #4232 and
Part Southeast Quarter - Section 22
Madison Township, T-21, R-18
City of Mansfield
Richland County, Ohio

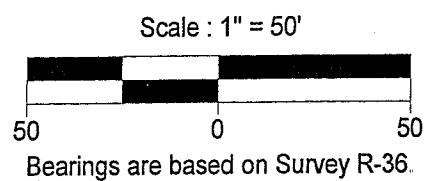
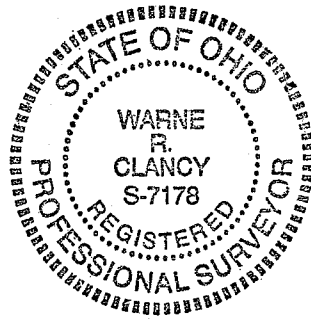


LEGEND

- Iron pin set with cap stamped "CLANCY 7178"
- 2" Mag-nail set



NEW SURVEY
OF EXISTING PARCEL
RICHLAND COUNTY
TAX MAP OFFICE
MLB 12-6-06
INITIAL DATE



Warne R. Clancy
Warne R. Clancy P.S. #7178

DATE: 12/04/06
JOB NO.: W113006

X-252

SURVEY DESCRIPTION

Lot #4228, #4229, #4230, #4231, #4232, and Part SE ¼ - Section 22
Madison Township, T-21, R-18
City of Mansfield
Richland County, Ohio

Situated in the City of Mansfield, Township of Madison, County of Richland, State of Ohio, and being Lots #4228, #4229, #4230, #4231, and #4232 of the consecutively numbered lots of said City and part of the Southeast Quarter of Section 22 of Township 21 of Range 18, more particularly described as follows:

Beginning for the same at an 2" Mag-nail set marking the southwest corner of said lot #4228, the same being a point on the east right-of-way line of a 16 foot wide alley; Thence, North 00 degrees 00 minutes 00 seconds West with said right-of-way line, a distance of 214.11 feet to a 2" Mag-nail set marking its intersection with the south right-of-way line of East Fifth Street (60');

Thence, South 89 degrees 16 minutes 49 seconds East with said right-of-way line, a distance of 150.01 feet to an iron pin set marking its intersection with the west right-of-way line of Snyder Street (47');

Thence, South 00 degrees 00 minutes 00 seconds East with said right-of-way line, passing an iron pin set for reference at 211.14 feet, a distance of 212.64 feet to the southeast corner of said lot #4228;

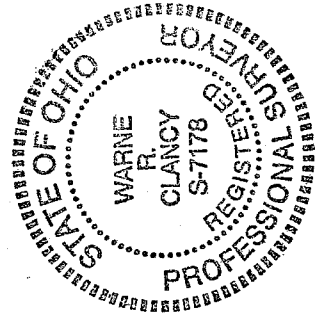
Thence, North 89 degrees 50 minutes 32 seconds West with the south line of said lot, a distance of 150.00 feet to the Place of Beginning, containing 32,006 square feet, of which 6,300 lie in each of the above said consecutively numbered lots and 506 in the above said part of said southeast quarter, according to survey by Warne R. Clancy, Professional Surveyor #7178, on November 30, 2006.

Iron pins set are #5 rebars with caps stamped "CLANCY 7178".

Bearings are based on Survey R-36.

NEW SURVEY
OF EXISTING PARCEL
RICHLAND COUNTY
TAX MAP OFFICE

MLB *B-L-06*
INITIAL DATE



Warne R. Clancy
Warne R. Clancy
P.S. 7178