

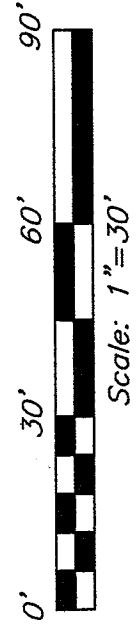
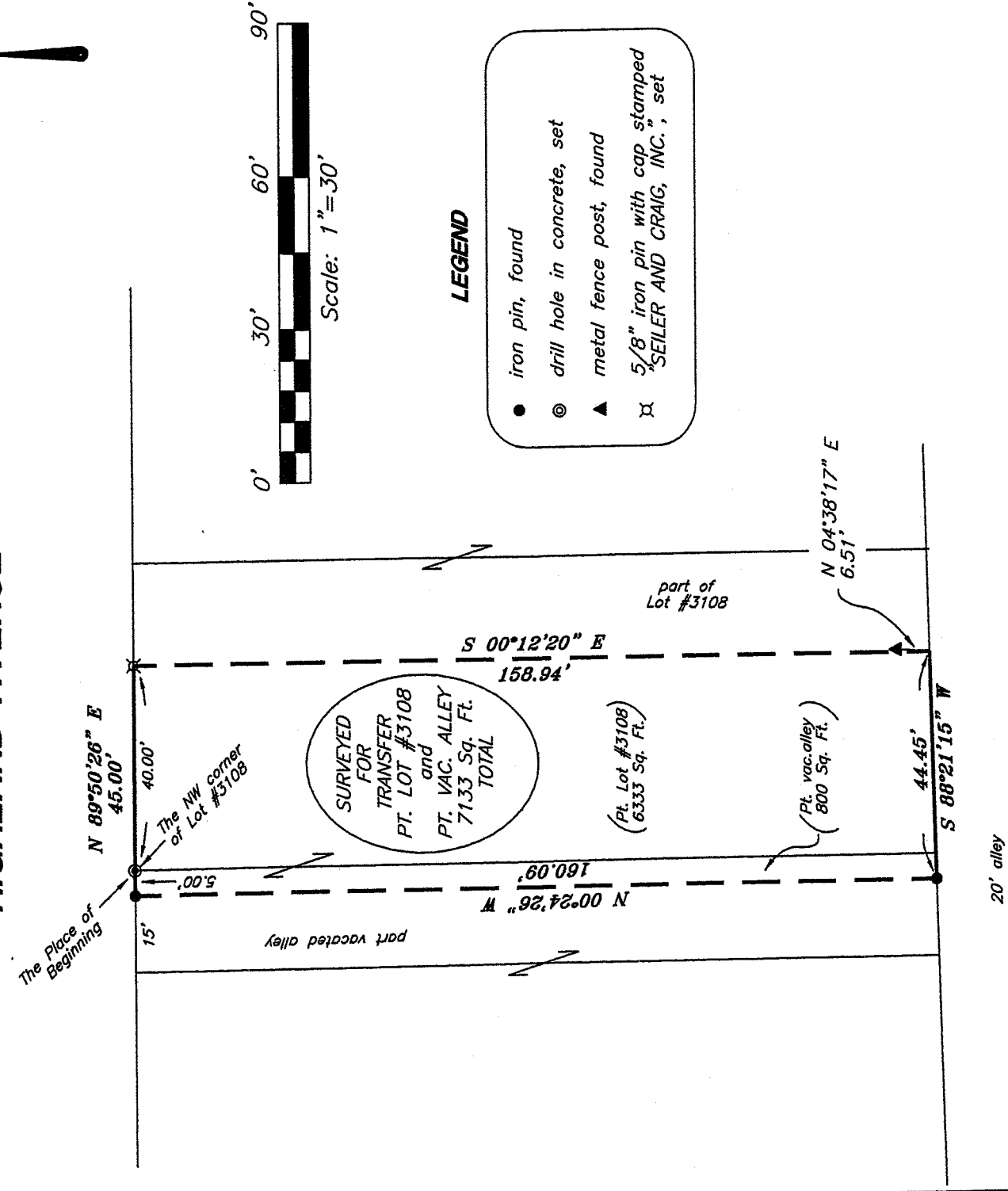
X-216

N0200



Bearings are based on an assumed meridian and are intended to be used for angular determination only.

# HIGHLAND AVENUE

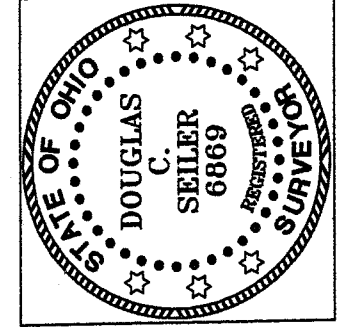


### LEGEND

- iron pin, found
- ⊙ drill hole in concrete, set
- ▲ metal fence post, found
- ⌘ 5/8" iron pin with cap stamped "SEILER AND CRAIG, INC.", set

NEW SURVEY  
OF EXISTING PARCEL  
RICHLAND COUNTY  
TAX MAP OFFICE

MLB INITIAL    11-14-06 DATE



*Douglas C. Seiler*

SURVEY BY: DOUGLAS C. SEILER PS #6869  
for SEILER & CRAIG SURVEYING INC.  
52-1/2 NORTH MAIN STREET  
MANSFIELD, OHIO 44902  
(419) 525-3644  
FAX (419) 525-3696

SURVEY PLAT FOR
BRIAN WILSON
PART OF LOT #3108 and PART VACATED ALLEY CITY OF MANSFIELD, OHIO
Date: November 8, 2006    Scale: 1" = 30
591h1nd.dwg/.asc

**SEILER & CRAIG SURVEYING, INC.**

Douglas C. Seiler, PS & Chad F. Craig, PS  
52 1/2 North Main Street  
Mansfield, Ohio 44902  
419-525-3644 Fax 419-525-3696  
www.seilerandcraig.com

**SURVEY DESCRIPTION**

PART OF LOT #3108, and  
PART OF A VACATED ALLEY  
CITY OF MANSFIELD, OHIO

Situated in the City of Mansfield, County of Richland, State of Ohio and being known as a part of Lot #3108 and a part of a vacated alley in said city, the entire tract being more particularly described as follows:

Beginning for the same on the south line of Highland Avenue at a drill hole set marking the northwest corner of said Lot; Thence, North 89 degrees 50 minutes 26 seconds East with the north line of said lot, a distance of 40.00 feet to an iron pin set;

Thence, South 00 degrees 12 minutes 20 seconds East a distance of 158.94 feet to an existing property corner, as referenced by a metal fence post found on a bearing of North 04 degrees 38 minutes 17 seconds East and at a distance of 6.51 feet from said corner;

Thence, South 88 degrees 21 minutes 15 seconds West with the north line of a 20' wide alley, a distance of 44.45 feet to an iron pin found;

Thence, North 00 degrees 24 minutes 26 seconds West a distance of 160.09 feet to an iron pin found on the south line of Highland Avenue;

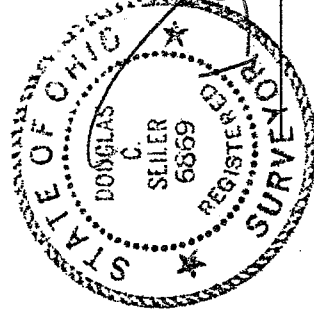
Thence, North 89 degrees 50 minutes 26 seconds East with said south line, a distance of 5.00 feet to the place of beginning, containing a total of 7133 square feet, of which 6333 square feet are located within part of said Lot #3108, and 800 square feet are located within part of said vacated alley, according to survey by Douglas C. Seiler, Professional Surveyor #6869 for Seiler & Craig Surveying, Inc. on November 7, 2006.

Iron pins set are 5/8" rods with caps stamped "SEILER AND CRAIG INC."

Bearings are based on an assumed meridian and are intended to be used for angular determination only.

NEW SURVEY  
OF EXISTING PARCEL  
RICHLAND COUNTY  
TAX MAP OFFICE

MLB 11-14-06  
INITIAL DATE



Douglas C. Seiler  
for Seiler & Craig Surveying, Inc.

X-216