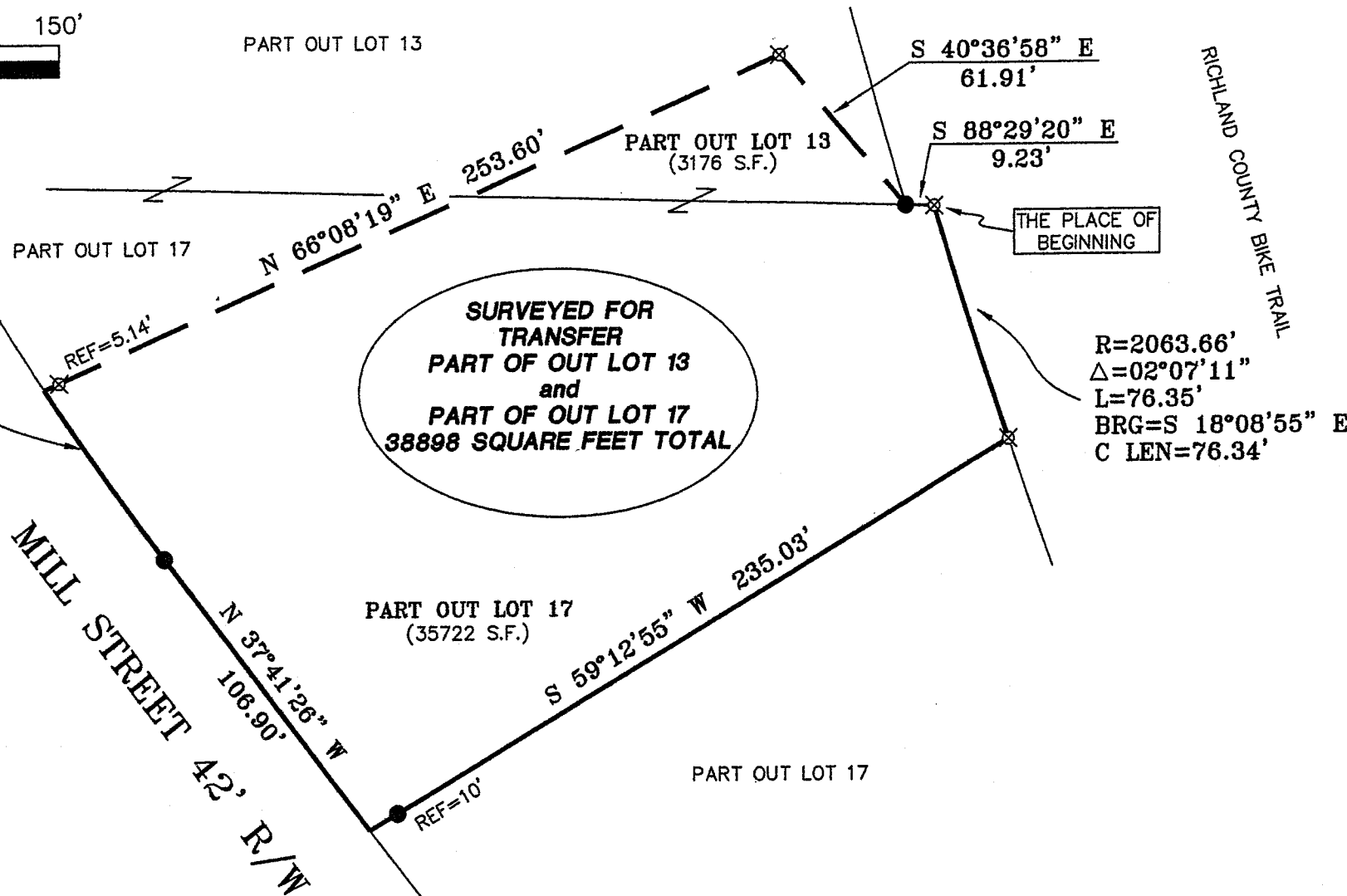


BEARINGS ARE BASED ON AN ASSUMED MERIDIAN

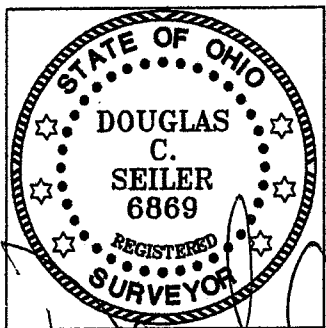


R=920.85'
Δ=04°03'07"
L=65.12'
BRG=N 35°39'53" W
C LEN=65.11'

R=2063.66'
Δ=02°07'11"
L=76.35'
BRG=S 18°08'55" E
C LEN=76.34'

LEGEND

- IRON PIN FOUND
- ⊗ 5/8" IRON PIN SET WITH CAP STAMPED "SEILER AND CRAIG, INC."



SURVEY BY: *Douglas C. Seiler*
 DOUGLAS C. SEILER PS. #6869
 for SEILER & CRAIG SURVEYING INC.
 52-1/2 NORTH MAIN STREET
 MANSFIELD, OHIO 44902
 (419) 525-3644
 FAX (419) 525-3696

VILLAGE OF LEXINGTON
APPROVED
 Date *Oct 11, 2006*
 Initials *C.F. Scholke*

NEW SPLIT
 RICHLAND COUNTY
 TAX MAP OFFICE
 Initial *MLB* DATE *10-16-06*

SURVEY PLAT FOR	
WRIGHT	
PART OUT LOT 13 & PART OUT LOT 17, VILLAGE OF LEXINGTON RICHLAND COUNTY, OHIO	
DATE: AUGUST 14, 2006	SCALE: 1"=50'
WRIGHT06	

X-165

SEILER & CRAIG SURVEYING, INC.

Douglas C. Seiler, PS & Chad F. Craig, PS
52 1/2 North Main Street
Mansfield, Ohio 44902
419-525-3644 Fax 419-525-3696
www.seilerandcraig.com

SURVEY DESCRIPTION

PART OF OUT LOT 13 and
PART OF OUT LOT 17
VILLAGE OF LEXINGTON, OHIO

Situated in the Village of Lexington, County of Richland, State of Ohio and being a part of Out Lot #13 and a part of Out Lot #17 in said Village, the entire tract being more particularly described as follows:

Beginning for the same at an iron pin set marking the northeasterly corner of said Out Lot #17; Thence, southeasterly with the easterly line of said Out Lot along a curve concave to the east with a central angle of 02 degrees 07 minutes 11 seconds, a radius of 2063.66 feet, an arc length of 76.35 feet, a chord bearing of South 18 degrees 08 minutes 55 seconds East with a chord distance of 76.34 feet to an iron pin set;

Thence, South 59 degrees 12 minutes 55 seconds West, passing through an iron pin found at 229.89 feet, a total distance of 235.03 feet to a point on the easterly line of Mill Street;

Thence, North 37 degrees 41 minutes 26 seconds West with said easterly line, a distance of 106.90 feet to an iron pin found and accepted as marking a point of curve;

Thence continuing with said easterly line along a curve concave to the east with a central angle of 04 degrees 03 minutes 07 seconds, a radius of 920.85 feet, an arc length of 65.12 feet, a chord bearing of North 35 degrees 39 minutes 53 seconds West with a chord distance of 65.11 feet to a point;

Thence, North 66 degrees 08 minutes 19 seconds East, passing through an iron pin set for reference at 5.14 feet, a total distance of 253.60 feet to an iron pin set;

Thence, South 40 degrees 36 minutes 58 seconds East a distance of 61.91 feet to an iron pin found on the south line of said Out Lot #13;

Thence, South 88 degrees 29 minutes 20 seconds East with said south line, a distance of 9.23 feet to the place of beginning, containing a total of 38898 square feet, of which 3176 square feet are located within part of said Out Lot #13, and 35722 square feet are located within part of said Out Lot #17, according to survey by Douglas C. Seiler, Professional Surveyor #6869 for Seiler & Craig Surveying, Inc. on August 14, 2006.

Iron pins set are 5/8" rods with caps stamped "SEILER AND CRAIG INC."

Bearings are based on an assumed meridian and are intended to be used for angular determination only.

NEW SPLIT
RICHLAND COUNTY
TAX MAP OFFICE

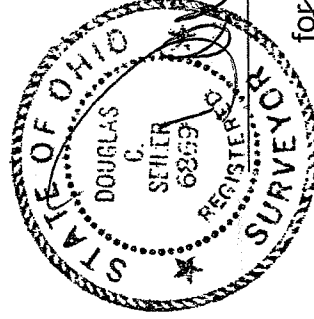
INITIAL DATE
DLS 10/16/06

VILLAGE OF LEXINGTON

APPROVED

Date Oct 11, 2006

Initials C.F. Seiler



Douglas C. Seiler
Douglas C. Seiler PS #6869
for Seiler & Craig Surveying, Inc.