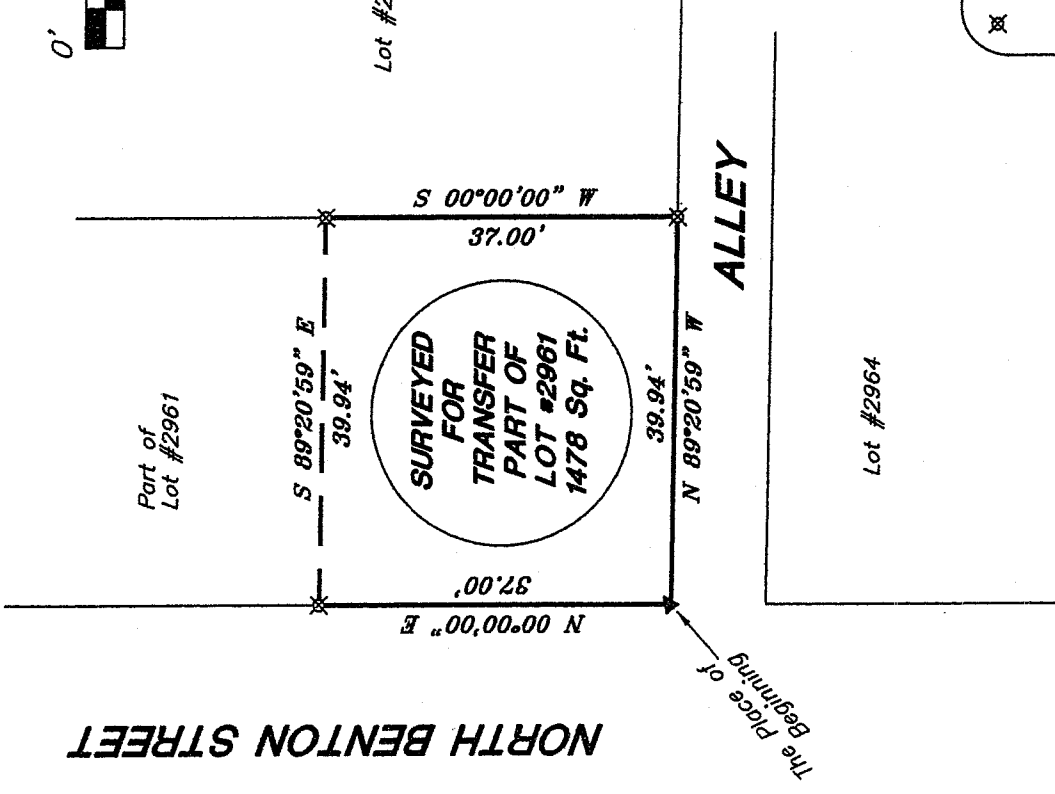
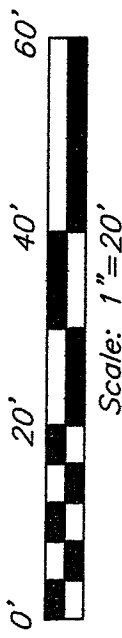


NORTH

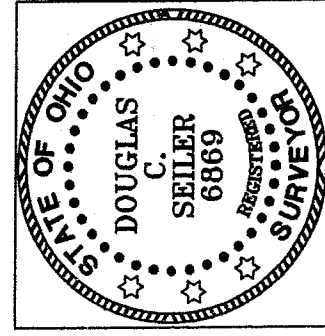


Bearings are based on an assumed meridian and are intended to be used for angular determination only.



LEGEND

- ✕ 5/8" IRON PIN SET WITH CAP STAMPED "SEILER AND CRAIG, INC."
- ▲ RAILROAD SPIKE SET



NEW SURVEY
OF EXISTING PARCEL
RICHLAND COUNTY
TAX MAP OFFICE

Initial: mb Date: 10-30-06

Douglas C. Seiler

SURVEY BY: DOUGLAS C. SEILER P.S. #6869
for SEILER & CRAIG SURVEYING INC.
52-1/2 NORTH MAIN STREET
MANSFIELD, OHIO 44902
(419) 525-3644
FAX (419) 525-3696

SURVEY PLAT FOR
PROPERTY TRANSFER
PART OF LOT #2961
CITY OF MANSFIELD
OHIO
Date: September 27, 2006 Scale: 1" = 20'
J6nbenton.dwg/.asc

X-149

SEILER & CRAIG SURVEYING, INC.

Douglas C. Seiler, PS & Chad F. Craig, PS

52 1/2 North Main Street

Mansfield, Ohio 44902

419-525-3644 Fax 419-525-3696

www.seilerandcraig.com

SURVEY DESCRIPTION

PART OF LOT #2961
CITY OF MANSFIELD, OHIO

Situated in the City of Mansfield, County of Richland, State of Ohio and being a part of Lot #2961 of the consecutively numbered lots in said city, and being more particularly described as follows:

Beginning for the same at a railroad spike set marking the southwest corner of said Lot #2961; Thence, North 00 degrees 00 minutes 00 seconds East with the west line of said lot, a distance of 37.00 feet to an iron pin set;

Thence, South 89 degrees 20 minutes 59 seconds East a distance of 39.94 feet to an iron pin set on the east line of said lot;

Thence, South 00 degrees 00 minutes 00 seconds West with said east line, a distance of 37.00 feet to an iron pin set marking the southeast corner of said lot;

Thence, North 89 degrees 20 minutes 59 seconds West with the south line of said lot, a distance of 39.94 feet to the place of beginning, containing 1478 square feet, according to survey by Douglas C. Seiler, Professional Surveyor #6869 for Seiler & Craig Surveying Inc., on September 25, 2006.

Iron pins set are 5/8" rods with caps stamped "SEILER AND CRAIG INC."

Bearings are based on an assumed meridian and are intended to be used for angular determination only.

NEW SURVEY
OF EXISTING PARCEL
RICHLAND COUNTY
TAX MAP OFFICE

MSB 10.3.06
INITIAL DATE



Douglas C. Seiler PS #6869
for Seiler & Craig Surveying, Inc.