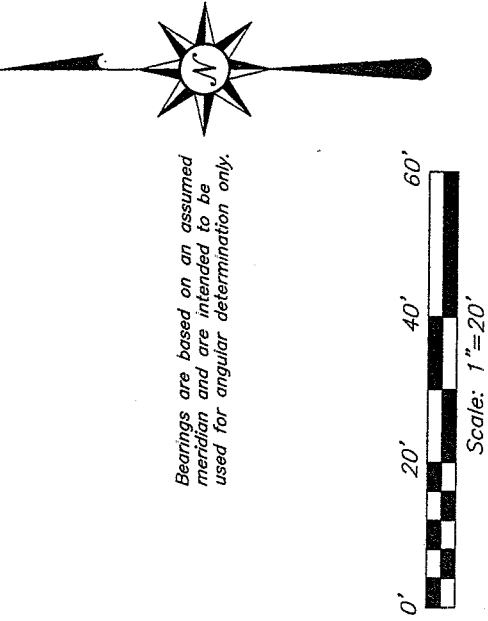
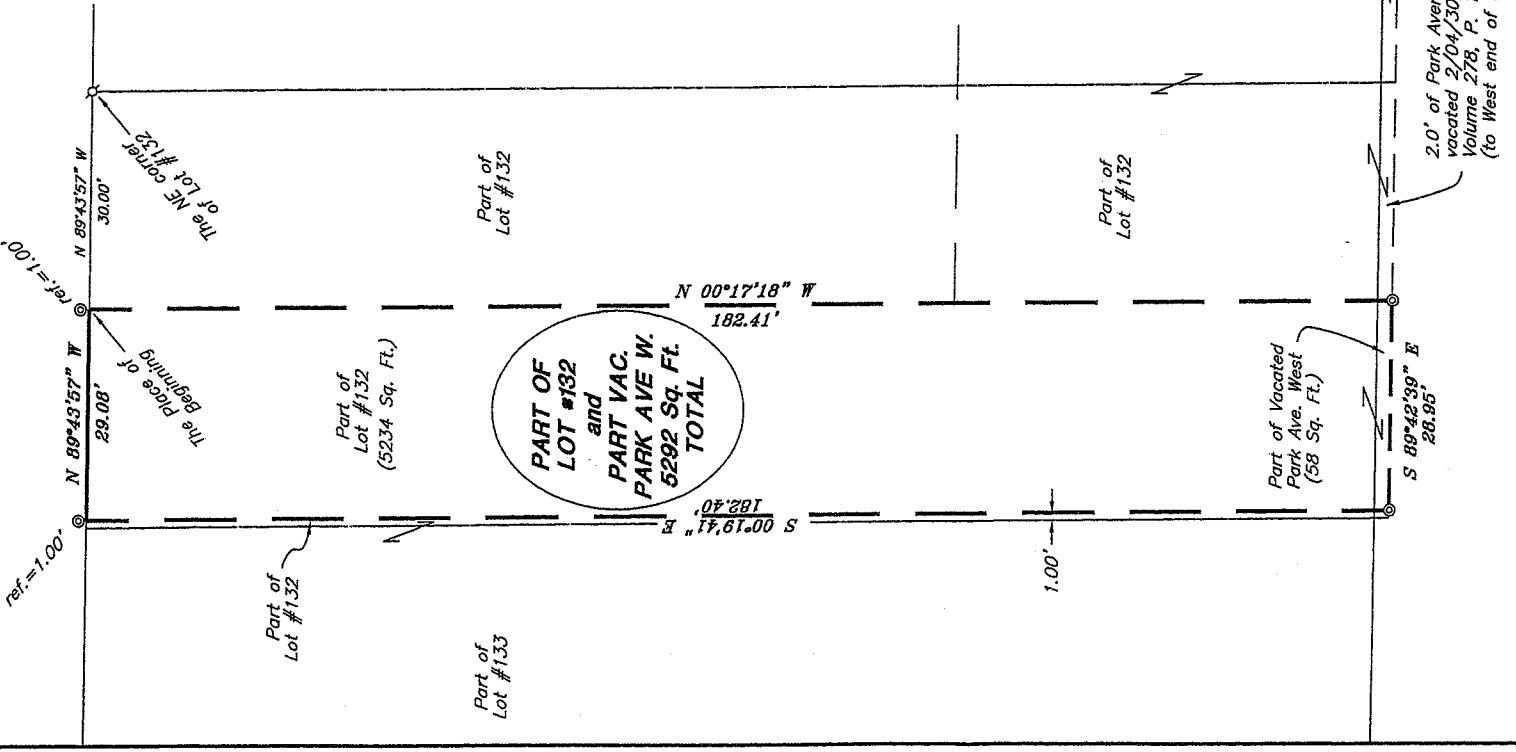


X-114

NORTH

LIBRARY COURT

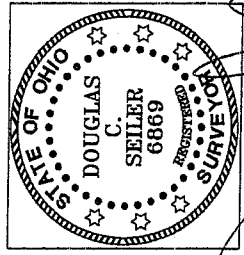


Bearings are based on an assumed meridian and are intended to be used for angular determination only.

LEGEND

- ⊕ Mag Nail spike, found
- ⊙ drill hole set

PARK AVENUE WEST



*Douglas C. Seiler*  
 SURVEY BY: DOUGLAS C. SEILER P.S. #6869  
 for SEILER & SMITH SURVEYING INC.  
 52-1/2 NORTH MAIN STREET  
 MANSFIELD, OHIO 44902  
 (419) 525-3644  
 FAX (419) 525-3696

NEW SURVEY  
 OF EXISTING PARCEL  
 RICHLAND COUNTY  
 TAX MAP OFFICE  
 INITIAL DATE  
 PAK 9/15/06

SURVEY PLAT FOR
PROPERTY TRANSFER
PART OF LOT #132, and PART OF VACATED PARK AVENUE WEST CITY OF MANSFIELD, OHIO
Date: Sept. 11, 2006
Scale: 1" = 20'

bobmyers.asc/.dwg

**SEILER & CRAIG SURVEYING, INC.**

Douglas C. Seiler, PS & Chad F. Craig, PS  
52 1/2 North Main Street  
Mansfield, Ohio 44902  
419-525-3644 Fax 419-525-3696  
www.seilerandcraig.com

**SURVEY DESCRIPTION**

PART OF LOT #132 and  
PART OF VACATED PARK AVENUE WEST  
CITY OF MANSFIELD, OHIO

Situated in the City of Mansfield, County of Richland, State of Ohio and being a part of lot #132 of the consecutively numbered lots in said city, and also being a part of vacated Park Avenue West (ref: Vol. 278, P. 184), the entire tract being more particularly described as follows:

Commencing at a Mag Nail spike found and accepted as marking the northeast corner of said Lot #132; Thence, North 89 degrees 43 minutes 43 seconds West with the north line of said lot, a distance of 30.00 feet to the place of beginning of the parcel herein described, as referenced by a drill hole set on a bearing of North 00 degrees 17 minutes 18 seconds West and at a distance of 1.00 feet;

Thence, continuing North 89 degrees 43 minutes 57 seconds West with said north line, a distance of 29.08 feet to a point as referenced by a drill hole set on a bearing of North 00 degrees 19 minutes 41 seconds West and at a distance of 1.00 feet from said point;

Thence, South 00 degrees 19 minutes 41 seconds East a distance of 182.40 feet to a drill hole set;

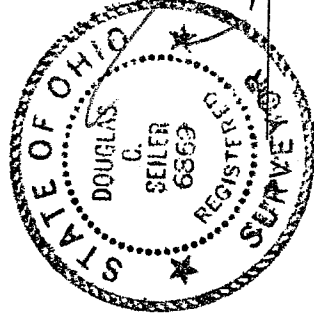
Thence, South 89 degrees 42 minutes 39 seconds East a distance of 28.95 feet to a drill hole set;

Thence, North 00 degrees 17 minutes 18 seconds West a distance of 182.41 feet to the place of beginning, containing a total of 5292 square feet, of which:

5234 square feet are located within part of said Lot #132, and  
58 square feet are located within vacated Park Avenue West

according to survey by Douglas C. Seiler, Professional Survey #6869 for Seiler & Craig Surveying, Inc. on September 11, 2006.

Bearings are based on an assumed meridian and are intended to be used for angular determination only.



*[Signature]*  
Douglas C. Seiler PS #6869  
for Seiler & Craig Surveying, Inc.

NEW SURVEY  
OF EXISTING PARCEL  
RICHLAND COUNTY,  
TAX MAP OFFICE  
INITIAL *DC* DATE *9-15-06*

X-114