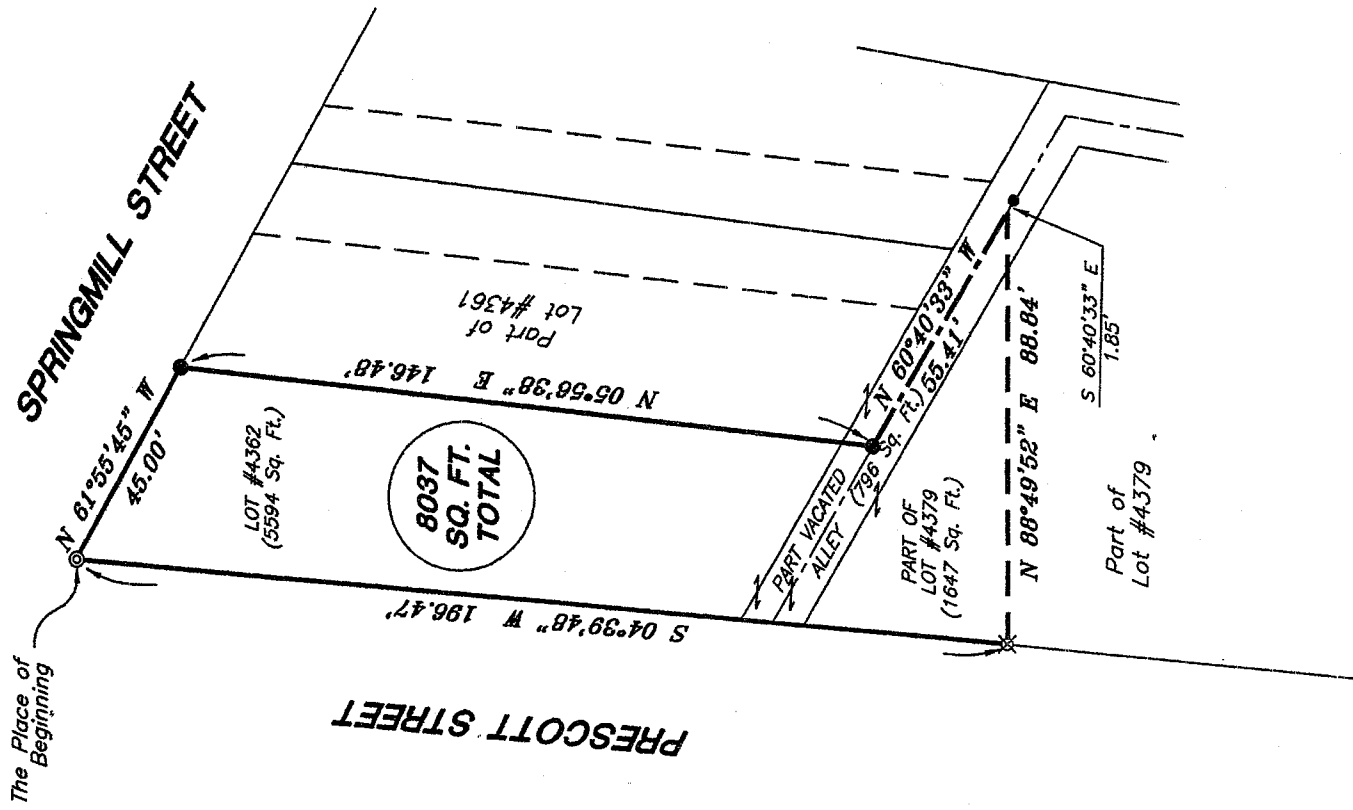
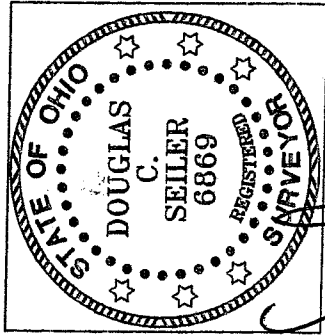


Bearings are based on Survey L-372 on file at the Richland County Tax Map Office and are intended to be used for angular determination only.



LEGEND

- iron pin, found
- ⊙ railroad spike, set
- ⊗ 5/8" iron pin set with cap stamped "SEILER AND CRAIG INC."



Douglas C. Seiler

SURVEY BY: DOUGLAS C. SEILER P.S. #6869
 for SEILER & CRAIG SURVEYING INC.
 52-1/2 NORTH MAIN STREET
 MANSFIELD, OHIO 44902
 (419) 525-3644
 FAX (419) 525-3696

NEW SURVEY
 OF EXISTING PARCEL
 RICHLAND COUNTY
 TAX MAP OFFICE

INITIAL **mlb** DATE **9-13-05**

X-111

SURVEY PLAT FOR
PROPERTY TRANSFER
LOT #4362, Pt. VAC. ALLEY, and Pt. LOT #4379
CITY OF MANSFIELD, OHIO
Date: Sept. 8, 2006
Scale: 1" = 40'
371sprngmla.osc/dwg

SEILER & CRAIG SURVEYING, INC.

Douglas C. Seiler, PS & Chad F. Craig, PS
52 1/2 North Main Street
Mansfield, Ohio 44902
419-525-3644 Fax 419-525-3696
www.seilerandcraig.com

SURVEY DESCRIPTION

LOT #4362, PART OF LOT #4379,
And PART VACATED ALLEY
CITY OF MANSFIELD, OHIO

Situated in the City of Mansfield, County of Richland, State of Ohio and being known as Lot #4362, and a part of Lot #4379 of the consecutively numbered lots in said city, and also part of a vacated alley in said City, the entire tract being more particularly described as follows:

Beginning for the same at a railroad spike set marking the northwest corner of said Lot #4362; Thence, South 04 degrees 39 minutes 48 seconds West with the east line of Prescott Street, a distance of 196.47 feet to an iron pin set;

Thence, North 88 degrees 49 minutes 52 seconds East a distance of 88.84 feet to a point on the centerline of a vacated alley, said point referenced by an iron pin found on a bearing of South 60 degrees 40 minutes 33 seconds East and at a distance of 1.85 feet from said point;

Thence, North 60 degrees 40 minutes 33 seconds West with said centerline a distance of 55.41 feet to an iron pin found;

Thence, North 05 degrees 56 minutes 38 seconds East a distance of 146.48 feet to an iron pin found and accepted as marking the northeast corner of said Lot #4362;

Thence, North 61 degrees 55 minutes 45 seconds West with the north line of said lot, a distance of 45.00 feet to the place of beginning, containing a total of 8037 square feet, of which:

5594 square feet are located within said Lot #4362
1647 square feet are located within part of sad Lot #4379, and
796 square feet are located within part of said vacated alley,

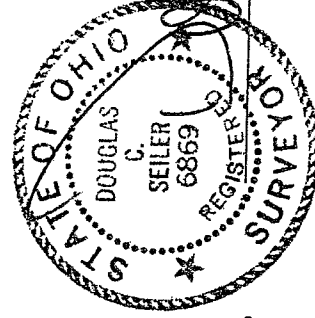
according to survey by Douglas C. Seiler, Professional Surveyor #6869 for Seiler & Craig Surveying, Inc, on September 7, 2006.

Iron pins set are 5/8" rods with caps stamped "SEILER AND CRAIG INC."

Bearings are based on Survey L-372 on file at the Richland County Tax Map Office and are intended to be used for angular determination only.

NEW SURVEY
OF EXISTING PARCEL
RICHLAND COUNTY,
TAX MAP OFFICE

MLB 9-12-06
INITIAL DATE



Douglas C. Seiler
for Seiler & Craig Surveying, Inc.

SEILER & CRAIG SURVEYING, INC.

Douglas C. Seiler, PS & Chad F. Craig, PS
52 1/2 North Main Street
Mansfield, Ohio 44902
419-525-3644 Fax 419-525-3696
www.seilerandcraig.com

SURVEY DESCRIPTION

LOT #4362, PART OF LOT #4379,
And PART VACATED ALLEY
CITY OF MANSFIELD, OHIO

Situated in the City of Mansfield, County of Richland, State of Ohio and being known as Lot #4362, and a part of Lot #4379 of the consecutively numbered lots in said city, and also part of a vacated alley in said City, the entire tract being more particularly described as follows:

Beginning for the same at a railroad spike set marking the northwest corner of said Lot #4362; Thence, South 04 degrees 39 minutes 48 seconds West with the east line of Prescott Street, a distance of 196.47 feet to an iron pin set;

Thence, North 88 degrees 49 minutes 52 seconds East a distance of 88.84 feet to a point on the centerline of a vacated alley, said point referenced by an iron pin found on a bearing of South 60 degrees 40 minutes 33 seconds East and at a distance of 1.85 feet from said point;

Thence, North 60 degrees 40 minutes 33 seconds West with said centerline a distance of 55.41 feet to an iron pin found;

Thence, North 05 degrees 56 minutes 38 seconds East a distance of 146.48 feet to an iron pin found and accepted as marking the northeast corner of said Lot #4362;

Thence, North 61 degrees 55 minutes 45 seconds West with the north line of said lot, a distance of 45.00 feet to the place of beginning, containing a total of 8037 square feet, of which:

5594 square feet are located within said Lot #4362

1647 square feet are located within part of sad Lot #4379, and

796 square feet are located within part of said vacated alley,

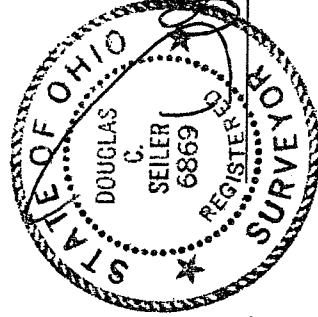
according to survey by Douglas C. Seiler, Professional Surveyor #6869 for Seiler & Craig Surveying, Inc, on September 7, 2006.

Iron pins set are 5/8" rods with caps stamped "SEILER AND CRAIG INC."

Bearings are based on Survey L-372 on file at the Richland County Tax Map Office and are intended to be used for angular determination only.

NEW SURVEY
OF EXISTING PARCEL
RICHLAND COUNTY,
TAX MAP OFFICE

MLB 9-15-06
INITIAL DATE



Douglas C. Seiler
Douglas C. Seiler PS #6869
for Seiler & Craig Surveying, Inc.

X-111