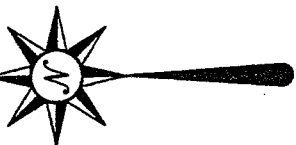
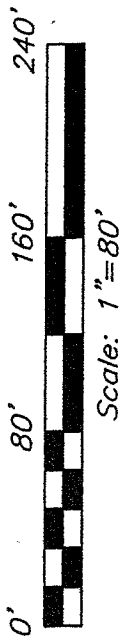
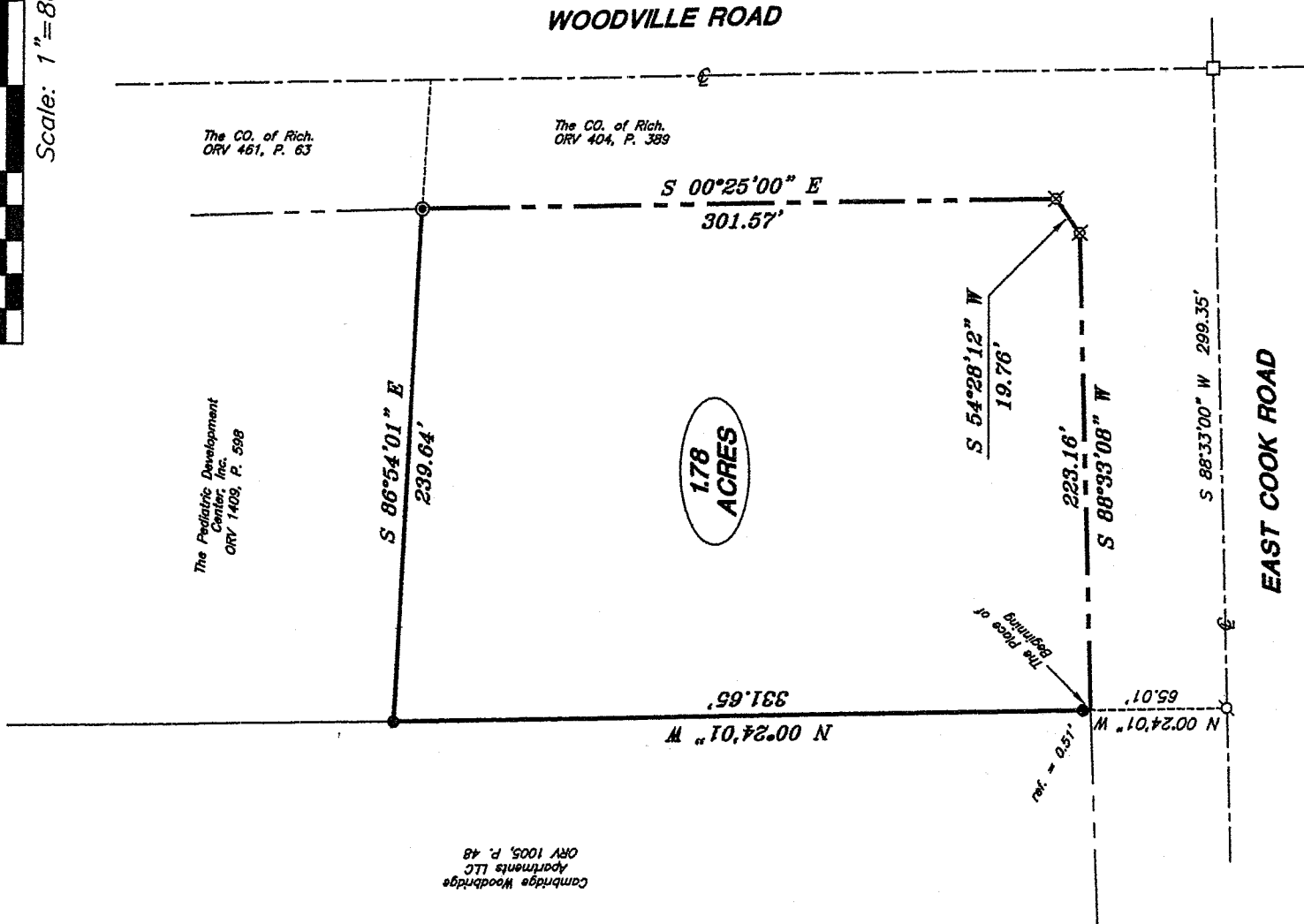


X-102

NORON



Bearings are based on an assumed meridian and are intended to be used for angular determination only.



The Pediatric Development Center, Inc.
ORY 1403, P. 598

Cambridge Woodbridge Apartments LLC
ORY 1005, P. 48

The CO. of Rich.
ORY 461, P. 63

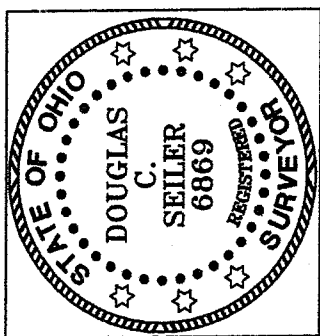
The CO. of Rich.
ORY 404, P. 389

1.78 ACRES

LEGEND

- ⊕ Mag Nail spike, found
- ⊙ drill hole, set
- iron pin, found
- iron pin in monument box, found
- ⊗ 5/8" iron pin set with cap stamped "SEILER AND CRAIG, INC."

NEW SURVEY
OF EXISTING PARCEL
RICHLAND COUNTY
TAX MAP, OFFICE
MB 9-6-06
INITIAL DATE



Douglas C. Seiler

SURVEY BY: DOUGLAS C. SEILER PS. #6869
for SEILER & CRAIG SURVEYING INC.
52-1/2 NORTH MAIN STREET
MANSFIELD, OHIO 44902
(419) 525-3644
FAV (419) 525-3696

SURVEY PLAT FOR
G. SLOBODA TRUST

PT. NW QTR. SECT. 34, T-21N, R-18W
CITY OF MANSFIELD
OHIO

Date: August 21, 2006 Scale: 1" = 80'
ingridnal.dwg/wci Y.osc

SEILER & CRAIG SURVEYING, INC.

Douglas C. Seiler, PS & Chad F. Craig, PS
52 1/2 North Main Street
Mansfield, Ohio 44902
419-525-3644 Fax 419-525-3696
www.seilerandcraig.com

SURVEY DESCRIPTION

PART NW QUARTER SECTION 34
CITY OF MANSFIELD, OHIO

Situated in the City of Mansfield, County of Richland, State of Ohio and being a part of the Northwest Quarter of Section 34 of Township 21 North, Range 18 West, and being more particularly described as follows:

Commencing at an iron pin found in a monument box which was accepted as marking the point of intersection of the centerline of Woodville Road with the centerline of Cook Road; Thence, South 88 degrees 33 minutes 00 seconds West with said centerline of Cook Road, a distance of 299.35 feet to a Mag Nail spike found; Thence, North 00 degrees 24 minutes 01 second West a distance of 65.01 feet to the southeast corner of a parcel currently owned by Cambridge Woodbridge Apartments, LLC (deed reference: ORV 1005, P. 48), said corner referenced by an iron pin found on a bearing of North 00 degrees 24 minutes 01 second West and at a distance of 0.51 feet from said corner, said corner being the place of beginning of the parcel herein described;

Thence, continuing North 00 degrees 24 minutes 01 second West with the east line of said Cambridge Woodbridge parcel, passing through the aforementioned iron pin at 0.51 of a foot, a total distance of 331.65 feet to an iron pin found and accepted as marking the southwest corner of a parcel currently owned by The Pediatric Development Center, Inc. (deed reference: ORV 1409, P. 598);

Thence, South 86 degrees 54 minutes 01 second East with the south line of said Pediatric Development parcel, a distance of 239.64 feet to a drill hole set in concrete on the west line of Woodville Road;

Thence, South 00 degrees 25 minutes 00 seconds East with said west line, a distance of 301.57 feet to an iron pin set;

Thence, continuing with said west line, and turning into the north line of Cook Road, South 54 degrees 28 minutes 12 seconds West a distance of 19.76 feet to an iron pin set on said north line;

Thence, South 88 degrees 33 minutes 08 seconds West with said north line, a distance of 223.16 feet to the place of beginning, containing 1.78 acres, according to survey by Douglas C. Seiler, Professional Surveyor #6869 on August 21, 2006 for Seiler and Craig Surveying, Inc.

Iron pins set are 5/8" rods with caps stamped "SEILER AND CRAIG, INC."

Bearings are based on an assumed meridian and are intended to be used for angular determination only.

NEW SURVEY
OF EXISTING PARCEL
RICHLAND COUNTY,
TAX MAP OFFICE

MSB 9-6-06
INITIAL DATE



Douglas C. Seiler PS #6869
for Seiler & Craig Surveying, Inc.

X-102